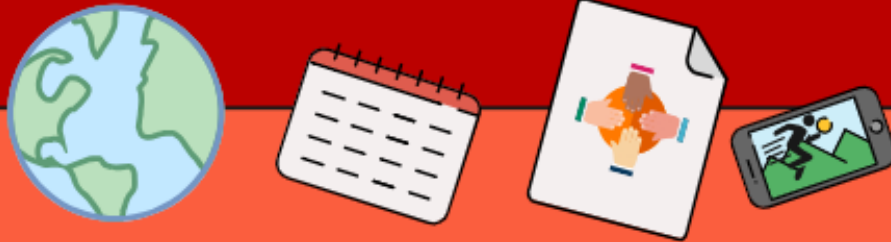


# School Improvement Plan



## 100% of teachers will pilot the modernized holistic curriculum framework

### Literacy

Accelerate learning by using data informed and research proven intervention strategies

#### Data:

22-23 Student survey: only 47.8% believe the work they are given at school is “just right”, 52.2% feel it is too easy, or too hard.

Report card data and teacher formative assessment data demonstrate an achievement gap: Accelerate learning in literacy/numeracy for our English classrooms to close the performance gap.

#### Strategies:

Pilot Holistic Curriculum  
Targeted PL on Holistic Curriculum with end goal  
Focus on integrating cross curricular  
Accelerated Learning Leader in K-2 and 3-5 will ensure data is collected and is used to inform intervention groups  
STIP’s will be created for students whose performance is considered below appropriate to track effectiveness of interventions  
Stretch learning up through 3-5

### NB Global Competencies

To build critical thinking and resilience with problem solving

Rationale: Students’ understanding of concepts is enhanced when they engage as problem-solvers, decision-makers, and/or investigators of challenging problems which resemble real life.

#### Strategies:

0.2fte STEAM Leader Project  
Coaching support for activities  
Low consumption of supplies  
Challenges tiered.  
Continued work with Growth Mindset  
Increased use of the greenhouse & classroom-based resources to support growing plants  
For each cross curricular unit, come up with a big idea inquiry question for which students can explore

#### Early feedback from teachers:

*High engagement in weekly STEAM lessons  
Students are bringing the activities back to the classroom and further expanding their learning  
Building opportunities for expected failure helps to build resilience for failure response in other tasks.*

## Positive Learning Environment Plan Goals -

Ensure all members of the school are welcomed, respected, accepted and supported.

- promote diversity and anti-racism and address heterosexism and discrimination by creating affirming cultures
- welcome newcomers: become an official “Welcoming School”
- Support teacher capacity in embedding First Nations content across the curriculum

Data: Student Survey, 66.6% feel they can express myself at school, 33.4% do not.; 12.6% do not want to spend time with their teachers

Provincial data: Culturally and Linguistically diverse schools – 984 newcomer registrations in ASDs and is comprised of students from 151 countries of origin, speaking 100 home languages.

RES data: we have 30 newcomers attending our school

Strategies:

Create and expand on a feature section of the library to include a diverse range of picture books which will be shared by teachers during weekly read aloud

Welcoming Schools initiative

Artist in Residence for new mural

Guest Speaker Education

EAL and devices to support

ESS and Coaches

Implement Positive Education Practices

- Conflict Resolution: Skillbuilding
- Mean vs rude vs bullying

Data: Student survey 22-23, 31% say they have been bullied this year, 17.8% do not tell when there are bullying problems. Bullying tends to be verbal and during unstructured times like recess and lunch time (51%).

Of the data collected in 22-23, only 60 students were implicated as offenders. More than 50% occurred on the playground.

Strategies:

All staff will review (monthly) the co-constructed behaviour PowerPoint

All staff will review (monthly) the playground co-constructed PowerPoint

All staff will be trained and regularly reminded about expectations on outdoor supervision (moving, wearing a bright vest for easy identification, proactively pointing out good behaviour, avoiding staff conversations)

T1 tools and strategies for PBIS review (Sept 22)

T2/T3: Admin will enter all office referrals in the incident management PowerSchool system and they will be reviewed monthly at leadership and staff meetings to develop trends and ways to proactively minimize the identified behaviours  
ESS will develop small group intervention training based on the skillstreaming in the classroom program to teach and reinforce specific behaviours.

Communication: Sharing of expectations annually in family handbook, weekly in “Rocky Report” as needed

Implement daily positive office referrals where students are celebrated