



# COURSE SELECTIONS

Entering Grade 11& 12

2023-2024

Rothesay High School

# Courses required for Graduation

- **3 English** - English 11 (2 credits) & English 12 (1 credit)
- **2 Math** - (NRF 10 + Foundations 110 OR Fin. Wrk. Plc. Math 110 , NBCC Wrk Ready Math 120)
- **1 Modern History**
- **1 Science** (Biology, Chemistry, Physics, Environ. Sc., Human Physiology, Intro to Electronics)
- **1 Fine Arts/Life Role:** (Visual Arts, Music, Performing Arts, Creative Arts, Graphic Art and Design, Ind. and Family Dynamics, Co-op, Wellness Phys Ed., Nutrition for Healthy Living, Entrepreneurship, Outdoor Pursuits, Tourism, Culinary Tech, Shop Courses)

- \_\_\_\_\_
- **8 COMPULSORY CREDITS**
- **+10 OPTIONS**
- \_\_\_\_\_
- **18 TOTAL**

- -----
- -----
- *5 Credits must be at the Grade 12 Level*
- *FI students: FILA 11 & 12 + 3 other FSL courses for FI Certificate*
- *\* Must Pass English Language Proficiency Assessment (ELPA)*



YOU NEED TO SELECT



**10 COURSES**

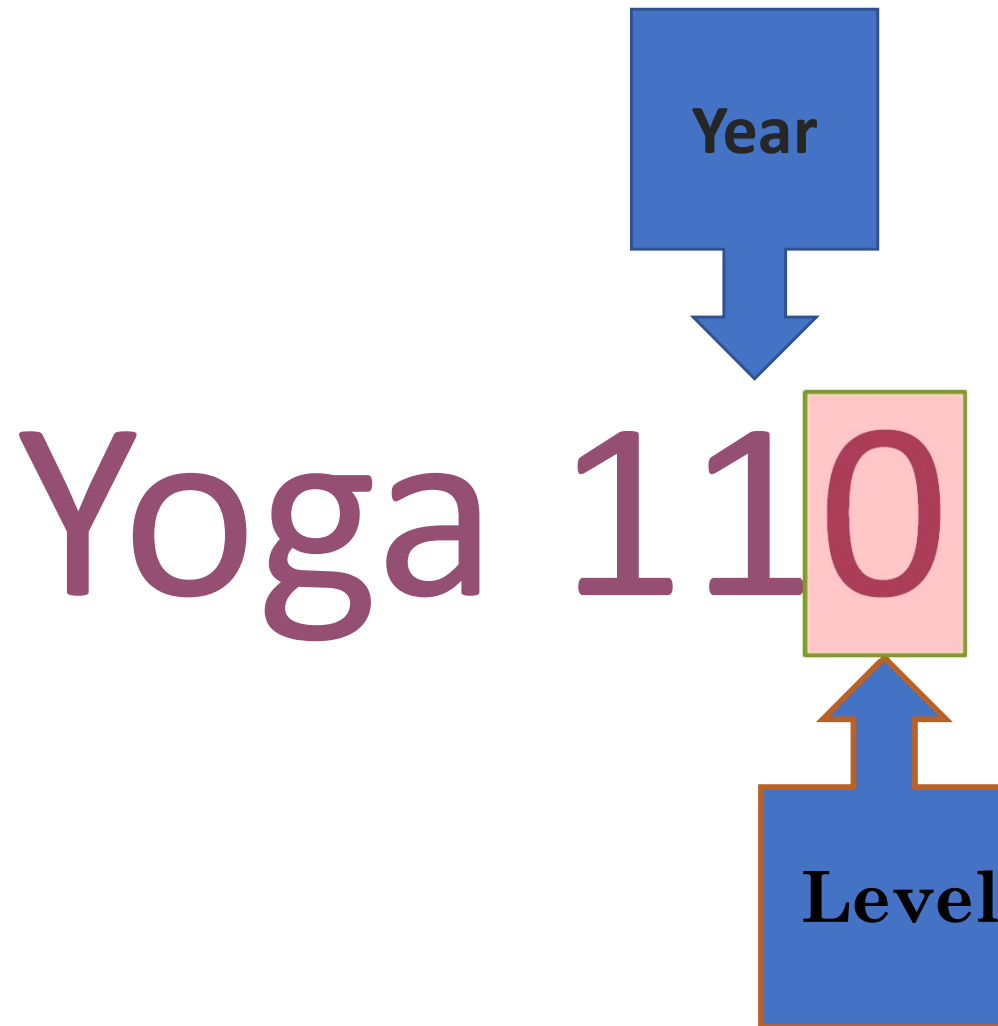
**2 alternatives  
(ALT)**

# REACH BACK TO GRADE 10

---

✓	<b>COURSE</b>
	ENGLISH LANGUAGE 10
	GMF 10 OR FI GMF 10
	POST INTENSIVE FRENCH 10 OR FILA 10
	SOCIAL STUDIES 10 OR FI SOCIAL STUDIES 10

# Course Levels





**Students in Grade 11 may take courses that begin with the number 12 – provided they have the pre-requisites for them.**



**Students in Grade 12 may take courses that begin with the number 11 – provided they have the pre-requisites for them.**



**Please remember that Grade 12 students MUST have 5 credits at the Grade 12 level to graduate.**

# Course Levels



**Level 1** = University prep  
(enriched)



**Level 2** = University prep



**Level 3** = College Prep



**Level 0** = General (No  
prerequisite)

How will  
you know  
what level  
to choose?

---

**TEACHERS WILL  
RECOMMEND  
APPROPRIATE LEVELS  
OF STUDY FOR YOU**







# LANGUAGES

- STUDENTS MUST PASS A FULL YEAR OF GRADE 11 ENGLISH AND ONE SEMESTER OF GRADE 12 ENGLISH TO GRADUATE.

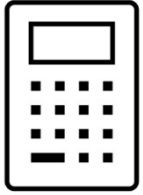
✓	COURSE (GRADE 11'S)	CRD
	ENGLISH 111/AP SEMINAR	3
	ENGLISH 112 LIT TEXT	1
	ENGLISH 112 INFO TEXT	1
	ENGLISH 113 LIT TEXT AND INFO TEXT	2

✓	COURSE (GRADE 12'S)	CRD
	ENGLISH 121 (ENRICHED)	1
	ENGLISH 122	1
	ENGLISH 123	1
	AP ENGLISH LIT 120	1



# LANGUAGE ELECTIVES

	<b>COURSE</b>	<b>CRD</b>
	JOURNALISM 120	1
	MEDIA STUDIES 120	1
	WRITING 110	1



# MATHEMATICS

STUDENTS MUST PASS GMF 10 PLUS **2 MORE** MATH CREDITS.

	COURSE	CREDITS
	FI NRF 10 (NUMBERS, RELATIONS & FUNCTIONS)	1
	FI FOUNDATIONS OF MATHMATICS 110 (PREREQ: FI GMF & FI NRF 10)	1
	FI PRE-CALCULUS 110 (PREREQ: FOUNDATIONS 110)	1
	NRF 10 (NUMBERS, RELATIONS & FUNCTIONS)	1
	FINANCE & WORKPLACE MATH 110 (PREREQ: GMF 10)	1
	FOUNDATIONS OF MATH 110 (PREREQ: GMF 10 & NRF 10)	1
	PRE-CALCULUS 110 (PREREQ: FOUNDATIONS 110)	1
	PRE- CALCULUS A 120(PREREQ: PRE-CAL 110)	1
	PRE-CAL CULUS B 120 (PREREQ: PRE-CAL 110)	1
	NBCC SKILLED TRADES MATH 120	1

## Mathematics K-9

### Grade 10

- All students are required to successfully complete Geometry, Measurement, and Finance 10.
- Number, Relations and Functions 10 is a credit course for high school graduation, it is a prerequisite course prior to the Foundations of Mathematics and Calculus mathematics pathways.

**Geometry, Measurement  
and Finance 10**

**Number, Relations and  
Functions 10**

### Grade 11

- Students must successfully complete Geometry, Measurement and Finance 10 before enrolling in Financial and Workplace Mathematics 11.
- Students must successfully complete Geometry, Measurement and Finance 10 and Number, Relations and Functions 10 before enrolling in Foundations of Mathematics 110.
- Students must successfully complete Foundations of Mathematics 110 (as well as successfully complete both Grade 10 mathematics courses) before enrolling in Pre-Calculus 110.

**Financial and Workplace  
Mathematics 110**

Pre-requisite:  
*Geometry, Measurement and  
Finance 10*

**Foundations of  
Mathematics 110**

Pre-requisites:  
*Geometry, Measurement and  
Finance 10 and  
Number, Relations and  
Functions 10*

**Pre-Calculus 110**

Pre-requisite or Co-requisite:  
*Foundations of  
Mathematics 110*

### Grade 12

- Students must successfully complete Financial and Workplace Mathematics 110 or Foundations of Mathematics 110 before enrolling in Financial and Workplace Mathematics 120.
- Students must successfully complete Foundations of Mathematics 110 before enrolling in Foundations of Mathematics 120.
- Students must successfully complete Pre-Calculus 110 before enrolling in Pre-Calculus A 120.

**NBCC SKILLED  
TRADES MATH  
120**

**Foundations of  
Mathematics 120**

Pre-requisite: *Foundations of  
Mathematics 110*

**Pre-Calculus A 120**

Pre-requisite: *Pre-Calculus 110*

**Pre-Calculus B 120**

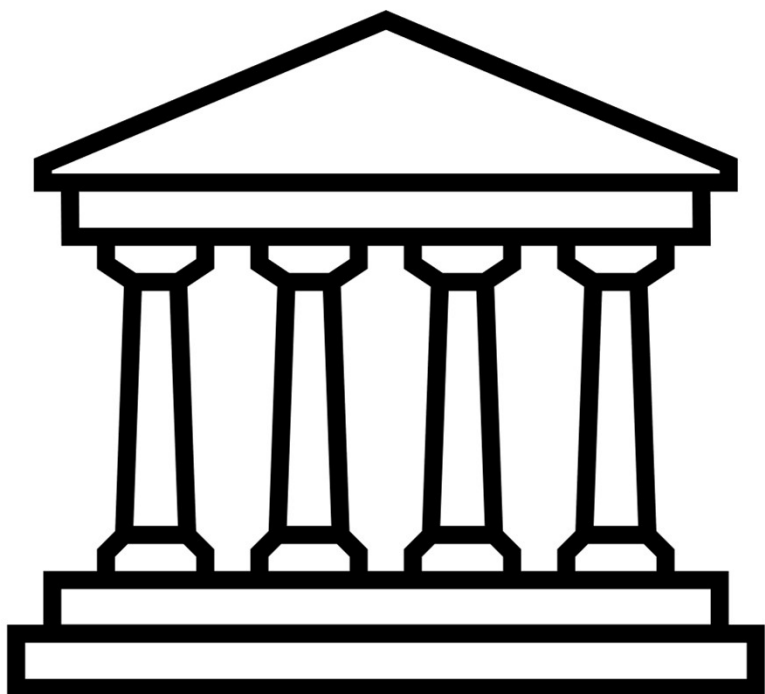
Pre-requisite or Co-requisite:  
*Pre-Calculus A 120*

**Calculus 120**

Pre-requisites:  
*Pre-Calculus A 120 and  
Pre-Calculus B 120*

# HISTORY & SOCIAL SCIENCES ELECTIVES

- All students must pass History 11



FI Modern History 112	1
FI Modern History 111	1
Modern History 111	1
Modern History 112	1
Modern History 113	1
AP European History 120 (Combined with <u>Mod.Hist.</u> 111, Political Science 120)	3
<b>HISTORY &amp; SOCIAL SCIENCE ELECTIVES</b>	
Canadian Geography 120	1
Canadian History 120	1
Economics 120	1
Hospitality and Tourism 110 (Computer based)	1
Indigenous Studies 120	1
Law 120	1
Nutrition for Healthy Living 120	1
Political Science 120	1
Psychology 120	1
AP Psychology 120	1
Sociology 120	1
World Issues 120	1

# SCIENCE

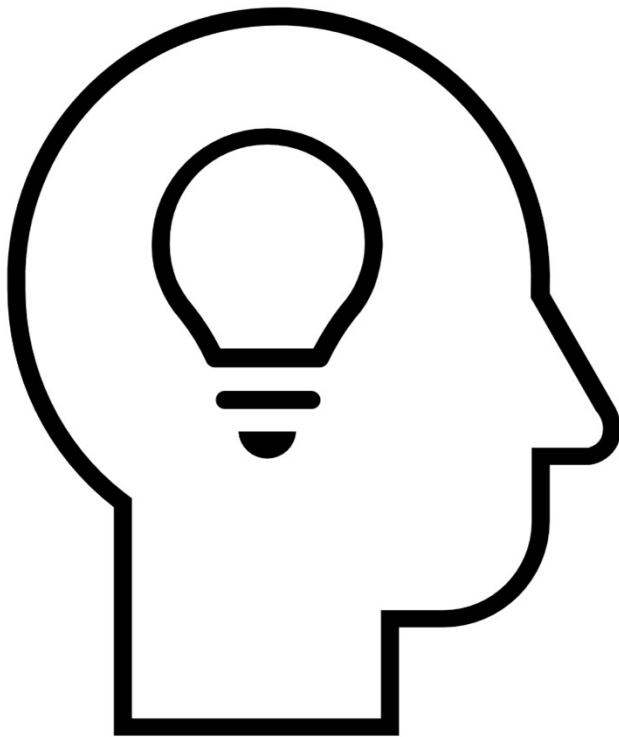


- ALL STUDENTS NEED ONE SCIENCE CREDIT TO GRADUATE

COURSE	CREDITS
AP BIOLOGY (Must sign up for Bio 121 as well)	
AP CHEMISTRY 120 (Must sign up for Chem 121 as well)	
BIOLOGY 111	
BIOLOGY 112	
BIOLOGY 121 (PREREQ: BIO 111)	
BIOLOGY 122 (PREREQ: BIO 112)	
CHEMISTRY 111	
CHEMISTRY 112	
CHEMISTRY 121 (PREREQ: CHEM 111)	
CHEMISTRY 122 (PREREQ: CHEM 112)	
HUMAN PHYS 110	
INTRO TO ELECTRONICS 110	
INTRO TO ENVIRONMENTAL SCIENCE 120	
ENVIRONMENTAL GEOGRAPHY 11	
PHYSICS 111	
PHYSICS 112	
PHYSICS 121 (PREREQ: PHYSICS 111)	
PHYSICS 122 (PREREQ: PHYSICS 112)	

# LIFE ROLE/PERSONAL DEVELOPEMENT

- EACH STUDENT NEEDS TO COMPLETE ONE LIFE ROLE OR APPLIED TECH. CREDIT TO GRADUATE



Co-op 120 – morning (Application Required)	3
Co-op 120 – afternoon (Application Required)	2
Co-op 120 – afternoon (I. D. E. A )	2
Creative Arts 110	1
Dramatic Arts 110	1
Dramatic Arts 120	1
<a href="#">Entrepreneurship 110</a>	1
<a href="#">FI Individual &amp; Family Dynamics 120</a>	1
Graphic Art and Design	1
<a href="#">Individual &amp; Family Dynamics 120</a>	1
Music 111/112	1
<a href="#">Nutrition for Healthy Living 120</a>	1
Outdoor Pursuits 110	1
Outdoor Pursuits 110 & Intro to Environmental Science	2
<a href="#">Performing Arts 120</a>	1
Physical Education Leadership 120	1
<a href="#">Visual Arts 110</a>	1
<a href="#">Visual Arts 120</a>	1
<a href="#">Wellness Through Physical Education 110</a>	1

# FI students must take:

---

FI Language Arts (FILA) 110

---

FI Language Arts (FILA) 120

---

+ THREE others:

*FI Modern History is recommended*







# FRENCH CREDIT COURSES:

COURSE	CREDITS
FI (EARLY) LANGUAGE ARTS 110 (COMPULSARY)	
FI (LATE) LANGUAGE ARTS 110 (COMPULSARY)	
FI LANGUAGE ARTS 12	
<b>FRENCH ELECTIVES</b>	
FI/FSL INDIVIDUAL & FAMILY DYNAMICS 120	
FI/FSL WORLD ISSUES 120	
FI/FSL TOURISM (Add to your sheet)	
FI/FSL ENVIRONMENTAL GEOGRAPHY (Add to your sheet )	
POST INTENSIVE FRENCH 110	
POST INTENSIVE FRENCH 120 (PREREQ: PIF 110)	

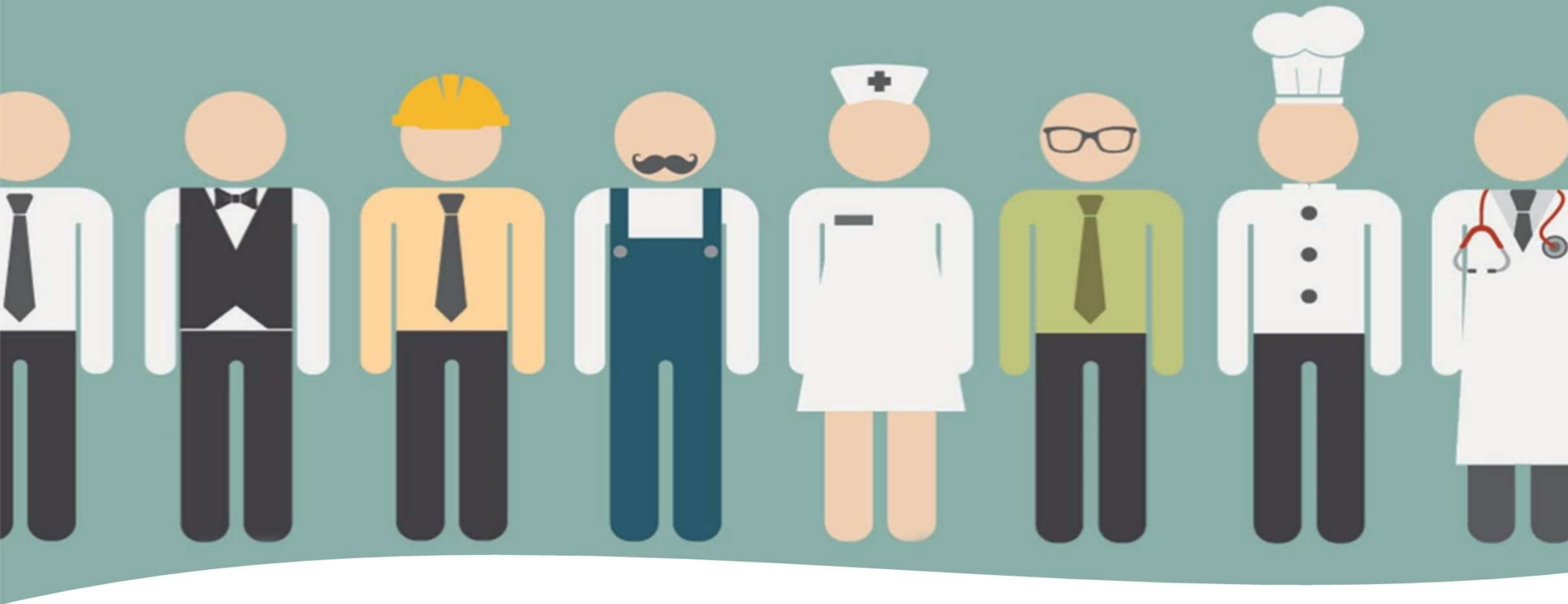
# FI Program Certificate of Completion

---

To receive an FI Program  
Certificate students must complete  
**5 French Immersion** courses at the  
grade 11 and 12 level.

**2 of these must be FILA 11 and 12**  
**1 of these should be FI History 112**





## ELECTIVES

- **THE REMAINDER OF YOUR COURSES ARE ELECTIVES...**
- **PLAN YOUR ELECTIVES CAREFULLY TO MAKE SURE THAT YOU HAVE THE COURSES YOU NEED WHEN YOU GRADUATE IN ORDER TO CONTINUE YOUR STUDIES...**

# ELECTIVE COURSES

## TECHNOLOGY:

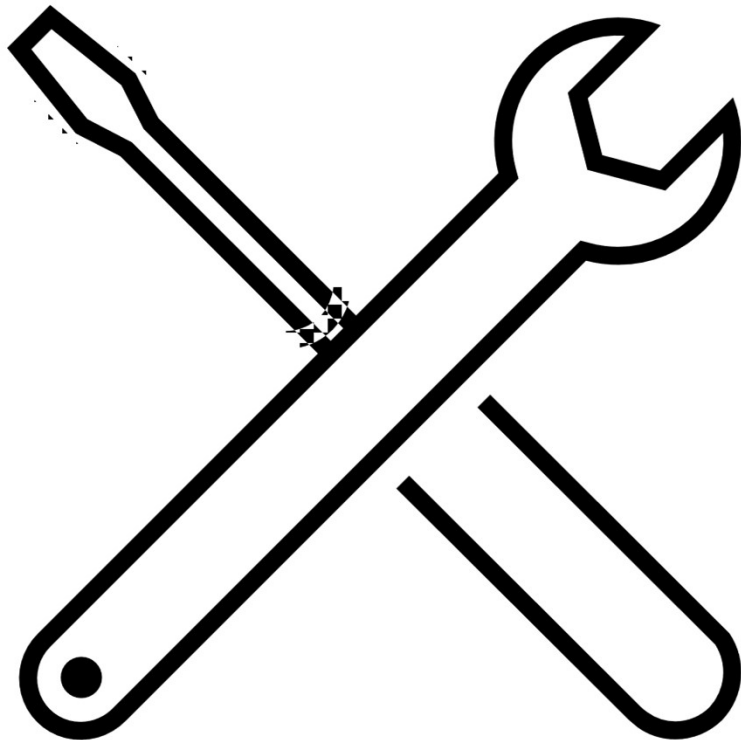
	<u>AP Computer Science Principles</u>	1
	<u>Computer Aided Design 110</u>	1
	<u>Computer Science 110</u>	1
	<u>Computer Science 120</u>	1

## BUSINESS:

	<u>Accounting 120</u>	1
	<u>Business Organization and Management 120</u>	1
	<u>Entrepreneurship 110</u>	1
	<u>Hospitality and Tourism 110 (Computer based)</u>	1
	<u>Agriculture 110</u>	1

# APPLIED TECHNOLOGY

- EACH STUDENT NEEDS TO COMPLETE ONE LIFE ROLE OR APPLIED TECH. CREDIT TO GRADUATE



<a href="#">Culinary Tech 110/120 (2 periods in one sem.) (Fee \$75)</a>	2
<a href="#">Framing &amp; Sheathing 110</a> and Residential Finish 120 (Course Fee \$150)	2
Mill & Cabinet 120 (Course fee \$75)	1
<a href="#">Introduction to Electronics 110</a>	1
Introduction to Electrical Wiring 110	1
Introduction to Electrical Wiring 120	1
Intro to Applied Tech 110 (Course fee \$75)	1

# Level 0 Courses:

## **Everyone can take:**

- Media Studies 120
- Hospitality and Tourism 110
- Entrepreneurship 110
- Intro to Env. Science 120
- Ind. & Family Dynamics 120
- Culinary Tech 11/12
- Performing Arts 120

## **More rigorous:**

Law 120

World Issues 120

Sociology 120

Business Organization and Management 120

Political Science 120

Intro to Accounting 120

## **Recommended for ENGINEERING:**

Computer Aided Design 110

## **Local Options (Max of 2)**

Yoga 110

Women Media & Culture 110

Song and Society 110



- This is a universal program that allows students to earn university credit pending the results of the AP exam



# Introducing - AP Capstone™

Research, Distinction, Academic Rigor

**AP Capstone™** is an innovative, new diploma program that gives students an opportunity to apply critical thinking, collaborative problem-solving, and research skills in a cross-curricular context.

- **Develops** transferable key academic skills (thinking, research, and communication) -- in response to feedback from higher education.
- **Builds** on the foundation of a new, two-year high school course sequence—*AP Seminar and AP Research—and is designed* to complement and enhance the in-depth discipline-specific study provided through AP® courses.
- **Cultivates** curious, independent and collaborative scholars and prepares them to make logical and evidence based decisions.



POSSIBLE  
AP  
CHOICES  
FOR  
2023-  
2024

---

**AP European History**

---

**AP English Literature and Composition**

---

**AP Computer Science Principles**

---

**AP Psychology**

---

**AP Calculus AB**

---

**AP Biology**

---

...this list continues to grow

# AP European History

- From the burning of witches to the destruction of the Berlin Wall, this course explores and illustrates the events that founded our society.
- Paired with Modern History 111 and Political Science 120 for 3 credits in 2 semesters.

## Semester 1

### Modern History 111

- Revolutions and rebellions past and present
- Total War in the 20<sup>th</sup> Century
- Dictatorship and Genocide
- Cold War Conflict and Ideology
- Learn *Historical Thinking* with role-play and research.



## Semester 2

### Political Science 120

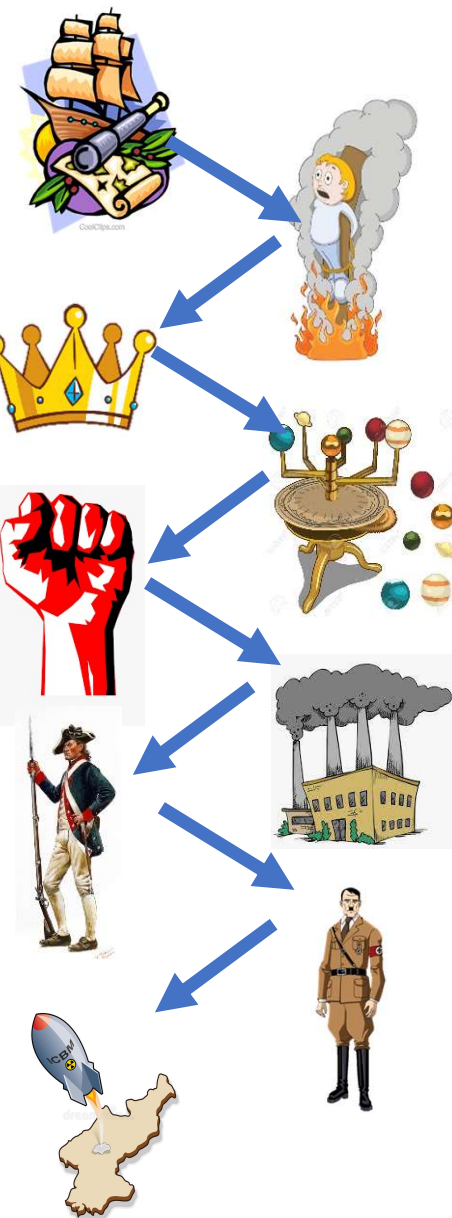
- Form mock political parties and parliament
- Draft and debate bills in committee
- Learn political philosophy and ideology
- Meet with Senators
- Virtual tour of Parliament



# AP European History Course Outline

Units	Chronological Period*	Exam Weighting
<b>Unit 1:</b> Renaissance and Exploration	c. 1450 – c. 1648	<b>10–15%</b>
<b>Unit 2:</b> Age of Reformation		<b>10–15%</b>
<b>Unit 3:</b> Absolutism and Constitutionalism		<b>10–15%</b>
<b>Unit 4:</b> Scientific, Philosophical, and Political Developments	c. 1648 – c. 1815	<b>10–15%</b>
<b>Unit 5:</b> Conflict, Crisis, and Reaction in the Late 18th Century		<b>10–15%</b>
<b>Unit 6:</b> Industrialization and Its Effects	c. 1815 – c. 1914	<b>10–15%</b>
<b>Unit 7:</b> 19th-Century Perspectives and Political Developments		<b>10–15%</b>
<b>Unit 8:</b> 20th-Century Global Conflicts	c. 1914 – present	<b>10–15%</b>
<b>Unit 9:</b> Cold War and Contemporary Europe		<b>10–15%</b>

*Modern History II Content*



# SOME COURSES REQUIRE APPLICATION FORMS:

---

- ▶ *Outdoor Education 110*
- ▶ *Physical Education Leadership 120*
- ▶ *Co-Op Education 120*
- ▶ *Personal Interest 1 & 2*

*Forms will be distributed to students once  
**COURSE SELECTION** has been completed*



# Application Deadline:

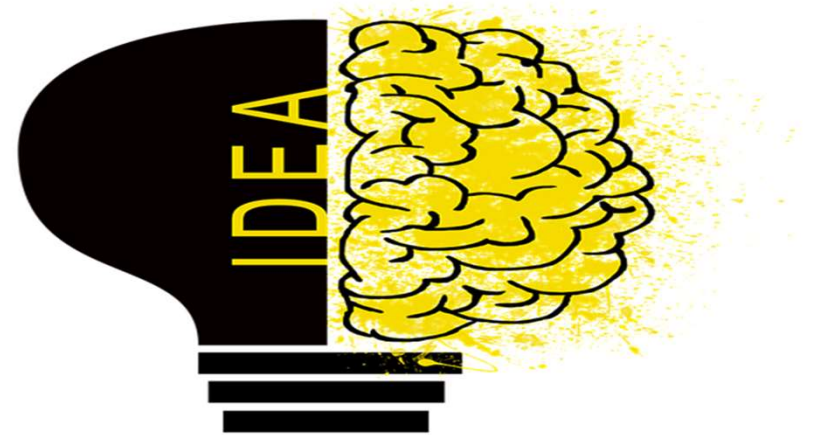
---

- ▶ Listen to announcements and keep an eye on the News & Notices Team.
- ▶ You are responsible to apply ON TIME
- ▶ Completed application forms must be submitted to the Office (deadline TBA)



# Idea Centre

- The IDEA (Innovation, Development, Entrepreneurship and Action) Centre program, facilitates student learning in the fields of entrepreneurship and community action.
- This course is a unique leadership opportunity for motivated high school students seeking a challenge and craving the opportunity to take their ideas beyond the walls of the school. The program develops student-led projects with support from local entrepreneurs and social innovators.



# Idea Centre

---

- This program takes place in SJ. Transportation to SJ is provided, however students are responsible for their transportation home.
- The program outcomes are designed to fill credit requirements for any two credits from the following courses: Co-Op 120, Economics 120, Entrepreneurship 110, Business Organization Management 120, or Leadership 120



# Distance Education

---

- The distance learning program offers several high school courses at the grade 11 & 12 level. Students take courses as part of their regular schedule, from the school, under the supervision of a local facilitator.
- Online courses are taken by students for all kinds of reasons, including:
  - Personal interest and choice
  - Additional selection of courses
  - Students want to experience online learning before university and post-secondary





# What does it take to succeed in an online course?

- Interest in the course and a desire to succeed.
- Students must be independent, they work at their own pace, but it's important to be persistent.
- Be able to work through problems.
- Time management
- Communicate effectively with their online teacher and course facilitator.
- Willing to develop basic technology skills.





TO  
SUMMARIZE.....

- ▶ You are selecting 10 courses and 2 alternates
- ▶ **You need 18/21 courses to graduate**
- ▶ **5 must be at the Gr.12 level**
- ▶ **No more than 2 local options**



# Planning

- You need to look beyond graduation
- If you know where you're going, you will pick the right courses from the beginning
- We have had some students realize that they don't have what they need to get into University or Community College... and stay an extra semester or year... or even come back a couple of years down the road.



# Post- secondary admissions information:

- NBCC <https://nbcc.ca/programs-courses/full-time-programs>
- UNB <https://www.unb.ca/admissions/requirements/>
- STU <https://www.stu.ca/admissions/>
- ACADIA <https://admissions.acadiau.ca/ugguidelines.html>
- DAL [https://www.dal.ca/admissions/undergraduate/hs\\_applicants.html](https://www.dal.ca/admissions/undergraduate/hs_applicants.html)
- STFX <https://www.stfx.ca/admissions/requirements>
- U de M: <https://www.umoncton.ca/conditions>
- SMU: <https://www.smu.ca/future-students/cs-admission-requirements.html>

# WHERE CAN I GET MORE INFORMATION?

---

- Course Calendar -> RHS Website
- University and College Admission Requirements (Online)
- Talk with your Guidance Counselor
- MyBlueprint.ca
- Talk with your Teachers
- Talk with your Parents





SCHOOL COUNSELLOR  
[janice.jordan@nbed.nb.ca](mailto:janice.jordan@nbed.nb.ca)

**AVAILABLE TO ANSWER YOUR QUESTIONS**

# Courses required for Graduation

- 3 English (English 11 and 12)
- 2 Math
- 1 Modern History
- 1 Science (Biology, Chemistry, Physics, Environ. Sc., Human Physiology, Physical Geography)
- 1 Personal Development (Visual Arts, Music, Theatre Arts, Family Dynamics, Co-op, HPE 12, Entrepreneurship, Outdoor Pursuits, Tourism, Yoga, Wellness, Graphic Art, Culinary Tech, Shop Courses)

•

---

•

**7 COMPULSORY CREDITS**

•

**+10 OPTIONS**

•

---

•

**18 TOTAL**

- • 5 Credits must be at the Grade 12 Level
- • Must Pass English Language Proficiency Assessment (ELPA)



Forms are due to  
the office before  
March 1<sup>st</sup>!

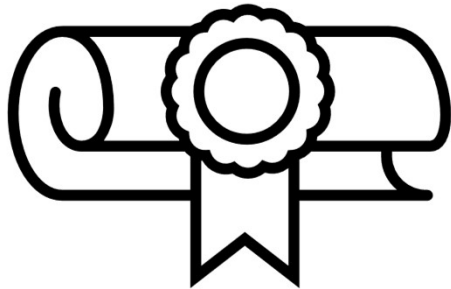
- 
- Snap a pic of your completed course selection form as a backup!
  - Completed Course Request form must be signed by a parent/guardian.







Admissions and Scholarship  
Myth Busting...



## HOW IS MY AVERAGE CALCULATED?

- **Universities** are only looking at required courses for entrance and top marks for the remaining elective(s).
- **Colleges** are only looking to see that you have successfully completed the required courses for entrance. (Profile A= HS diploma or equivalent)
- **Outside scholarships and bursaries-** specific criteria and seldom marks alone.
- **How does RHS calculate my average?** We drop the lowest mark