



# Fairvale Elementary November Newsletter



October 25, 2012

*11 School Avenue,*

*Rothsay, NB*

*E2E 1Z9*

*Telephone: 847-6206*

*Fax: 847-6267*

*www.fairvale-  
elementary@nbed.nb.ca*

*Bonnie Hierlihy Principal*

*Julie McNamee Vice Principal*

*Tara Cowan Admin. Assistant*

## Data, Data and More Data!

This year we have implemented **benchmark assessments** in mathematics, reading, and writing. In math, teachers will administer the same assessment three times yearly which reflects year end outcomes in number sense and operation.

Teachers will be doing reading records with our children three times yearly as well to determine specific reading levels based on fluency and comprehension. This has been a practice at primary for a number of years and we are extending it to the elementary grades.

Writing benchmarks will be used as well. Twice this year (January and April) teachers will have the students work on a demand piece of writing and will ensure it is administered similar to the Provincial Writing Assessment protocol. These writing pieces will be evaluated using the Provincial Writing Standards Document.

The purpose of the benchmarks is not to take the place of the ongoing formative assessments teachers are always doing; it is to further evaluate students' knowledge and skills and to inform instructional planning and decision making in the classrooms. Children who need more help with a specific concept will be provided with it and those who have already mastered a skill will be provided with 'stretch' learning opportunities.

### Thank you!

Thank you to the families who supported our fund-raising campaign. We raised over \$6500! This money will allow us to make school purchases that our budget would not otherwise allow.

### I Care Rules

- We listen to each other
- Hands are for helping, not hurting
- We use I-Care Language
- We care about each other's feelings
- We are responsible for what we say and do

## On Site After School Care

The Go-Go After School Program, a revolutionary take on after school programming takes place on site at YOUR SCHOOL. Focusing on five main principles: science, leadership, entrepreneurship, arts & culture, and physical activity, Go-Go After School provides a space for children to discover their personal leadership & self-starting skills. We have spots AVAILABLE in our part-time or full-time after school care on-site at Fairvale Elementary School, as well as a full-year care option that covers all storm days, PD Days, camps, and Summer care (set to take place right at Fairvale as well!).

For more information or to register.... Call: 1-877-977-4646 Email: [tumble@gogogym.com](mailto:tumble@gogogym.com) or Visit: [www.gogogym.com](http://www.gogogym.com)!

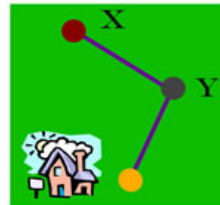
# Literacy News

We all know the benefits of regular reading but how do we make the best of reading time at home. One place to begin is to insure that your child has chosen a good fit book. When assessing your child the teacher will determine an independent reading level, (more than 95% accuracy rate) and an instructional level (90-95%). This will also take into consideration comprehension, how well your child understands what is read. Much of the reading at home will fall into the independent level, a book that your child reads comfortably with few errors. If your child is reading below grade level you may feel that harder books are in order. However, when your child is struggling to read a book that is too challenging it often leads to frustration and discouragement, to feelings that we never want to be associated with reading. Even an adult can sound like a struggling reader when tackling material that is difficult. (Don't ask me to read anything by Umberto Eco aloud).

Good fit books allow children to feel successful as well as motivate them to read more. Re reading familiar texts is a great strategy to improve fluency and comprehension. As children read more fluently they learn to group words into phrases. Once they feel the satisfaction of reading a book fluently with few errors they will keep coming back for more, which is the really best plan for becoming better reader.

# Math News

Problem Solving Strategy of the Month:



## MAKE A PICTURE OR DIAGRAM

Turning the words of a problem into a picture or a diagram can help you

"see" the problem.

By using the part of your brain that visualizes a situation or object, you may see relationships or information that help you solve the problem. Try **making a picture or a diagram** to solve these problems:

K - 2	3 - 5	Challenge!
On the playground there are three bicycles and four tricycles. How many wheels are there?	Every bike slot in a bicycle rack was filled. Donna's bike was in the middle. There were six bikes to the right of Donna's. How many bicycles were in the bicycle rack?	In the restaurant there are 12 square tables. Only one person can sit on each side. What is the greatest number of people that can be seated if the tables are pushed end to end into one large rectangle?

## Counselor's Corner: Building Skills at Home in November - The Second of the Seven Habits: Begin with the End in Mind

Life is busy and it's easy to be swept along with the flow of society's values and trends without having any sense of vision or purpose in our personal and family lives. As parents of young children and even older ones, it takes time and effort to decide what kind of family we really want to be and identify the principles that will help get us there.

Children can really push our buttons but if we pause between the stimulus and the response, and act rather than react, we can change the relationship dynamic completely. Take for example the story at the beginning of the chapter on Habit 2 in *The 7 Habits of Highly Effective Families*.

It tells of a pre-schooler who washed the dishes using a jug, leaving a huge puddle on the floor. His mother's initial reaction was to yell at him and spank him but instead she asked him what he was trying to do. He replied that he was trying to be "a helping man." So she helped her little boy to clean up the mess and together they came up with a solution for the next time he wants to help wash the dishes.

The outcome to this experience is changed completely from one of the child (as well as the mother) feeling guilty, embarrassed, and ashamed to one in which the child feels affirmed, appreciated and loved (and the mother is feeling proud and happy, too!) This mother made a huge deposit in her son's Emotional Bank Account that day.

Our challenge as parents is to create a home environment in which children can be taught and trained in a respectful, loving way. Choosing to make deposits in all our family members' Emotional Bank Accounts will give our children a sense of belonging and build a strong foundation of trust. Creating a Family Mission Statement together is the next step towards building a strong family culture by providing a sense of shared vision and values.

For more information on the Habits, please refer to *The 7 Habits of Highly Effective Families* by Stephen Covey or contact me at 847-6304 or [jane.perkinslove@nbed.nb.ca](mailto:jane.perkinslove@nbed.nb.ca).

Registrations for **Rainbows** are coming in steadily to the Guidance Office and soon groups will start for students in K to 5. If your child has had a major change, through death, divorce, adoption, parent in a new relationship, remarriage of a parent, new sibling, illness, etc. and you like your child to have the opportunity to be part of this wonderful program, then please contact Jane Perkins Love at 847-6304 [jane.perkinslove@nbed.nb.ca](mailto:jane.perkinslove@nbed.nb.ca).



## *Important Dates*

- ⇒ Nov.1 Skating—2 Blanchard and O'Brien, 1 Kilpatrick and McNeill, 4MacPhee and MacGillivray
- ⇒ Nov.1 Lunch orders due
- ⇒ Nov.5 FES Clothing order forms go home
- ⇒ Nov.5 Food period #3 starts
- ⇒ Nov. 7 Home and School Meeting 7:30PM
- ⇒ Nov. 8 Skating—2 Blanchard and O'Brien, 1 Kilpatrick and McNeill, 4MacPhee and MacGillivray
- ⇒ Nov. 9 Remembrance Day Assembly
- ⇒ Nov. 12 No school in honor of Remembrance Day
- ⇒ Nov. 14 Clothing orders due
- ⇒ Nov. 15 Skating - 5 Robichaud, 4/5 Martin, 1 Palmer, 1 Harroun, k/1 Milburn, 2 Shillington, 2 Josselyn, 1/2 Creamer
- ⇒ Nov 22 Skating - 5 Robichaud, 4/5 Martin, 1 Palmer, 1 Harroun, k/1 Milburn, 2 Shillington, 2 Josselyn, 1/2 Creamer
- ⇒ Nov. 22 Welcome to Kindergarten sessions 3:30 or 5:30 (parents selected time during registration)
- ⇒ Nov. 22 PSSC Meeting in the library at 7:30
- ⇒ Nov. 23 Report cards go home
- ⇒ Nov. 24 KV Santa Claus Parade
- ⇒ Nov. 28 Scholastic Bookfair
- ⇒ Nov.29 Skating - 5 Robichaud, 4/5 Martin, 1 Palmer, 1 Harroun, k/1 Milburn, 2 Shillington, 2 Josselyn, 1/2 Creamer
- ⇒ Nov. 30 No school - Parent Teacher Meetings

### Looking Ahead to December

- ⇒ Dec. 9 Christmas Movie (2PM)
- ⇒ Dec. 12 Christmas Choir Concert (7PM)
- ⇒ Dec. 18 Christmas concert grades 1-5 (8:30 parents with surnames beginning A-M, 12:15 parents with surname beginning N-Z)
- ⇒ Dec. 19 Kindergarten Christmas Concert 12:30
- ⇒ Dec. 21 Last Day before Christmas break

## 2013-2014 Kindergarten Preparations Are Underway

**Next Event: Welcome To Kindergarten –Nov. 30th- 3:30 & 5:30**

### Kickoff To Kindergarten"- October 18

Thank you to parents who attended this important meeting. This parent session provided parents with information on the Transition to School plans for this year. We discussed kindergarten readiness and answered questions regarding the EYE-DA assessment that will be administered in January to every prekindergarten students in the province.

### "Welcome To Kindergarten"- Nov. 22nd(3:30 or 5:30)

This family event will give you tips and ideas on how to use the material you will receive when you leave this session. You and your child will move through learning centres with teachers, doing activities together. At the end of the evening, you will have a free bag full of resources worth more than \$25 to use at home! This session will be between 45 minutes and one hour. When you attended the "Kickoff To Kindergarten" session you would have signed up for one of the sessions, either at 3:30 or 5:30.

For further information please contact the school or Trina Pierce Transition, to School Coordinator, or [Trina.Pierce@nbed.nb.ca](mailto:Trina.Pierce@nbed.nb.ca).

**Count Down  
to Kindergarten**

### Thank You From the Music Department

Our music program is in full swing and we are enjoying every minute of it. The beautiful room and new instruments have us more excited than ever. I great big THANK YOU to our parents and Home and School for all their support of our music program.



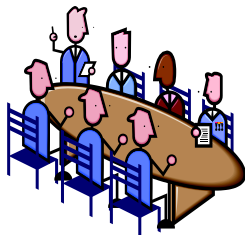
### Calling All Moms & Dads! Volunteers Needed for Careers On The Move!

F.E.S. needs parents, relatives, and/or friends to take part in Career Week activities November 5<sup>th</sup> to 9<sup>th</sup>. On **Thursday November 8<sup>th</sup>**, volunteers are needed to set up interactive "work" displays in the gym or to be outside along Strong Avenue, with a work related vehicle, so students can learn about your career in a "hands-on" way. Our goal is to expose the children to as many different careers as possible so people from all occupations are welcome.

If you would prefer to visit just one or two classes or you are unable to help out on November 8<sup>th</sup> but are available another day the week of November 5<sup>th</sup> -9<sup>th</sup> then we would love to have you join us.

Please let us know that you want to be a part of these exciting initiatives by returning the lower portion of the yellow **Careers On The Move** notice sent home earlier this week to your child's teacher or by contacting Jane Perkins Love at 847-6304 or [jane.perkinslove@nbed.nb.ca](mailto:jane.perkinslove@nbed.nb.ca).

# Home and School News



Our Monthly Home and School meeting will be taking place on Wednesday, November 7th at 7:30pm in the school library. All are welcome! The Agenda and minutes will be posted under the Home and School section of the Home and school website for your information. **7:30-9:00**

[WWW.FAIRVALEHANDS.CA](http://WWW.FAIRVALEHANDS.CA)

## Menu for food Period 3—November 7– December 9

Monday - Friay	\$0.40 per milk/per day	Baxter Milk – white or chocolate, 250 ml size	Baxter Dairy	<b>\$9.20 for the 5 weeks (23 days) in the period.</b>
Monday	\$2.50 per order  <b>AND/OR</b> \$3.00/pe r meal	5 Mini pancakes served warm. Please supply maple syrup from home in an easy to open container and maybe a wet wipe.  <b>AND/OR</b> Chicken Alfredo – noodles, chicken, low-fat alfredo sauce, light shredded cheese, served with a ww bun	<i>Both items supplied by the Old Time Catering</i>	<b>\$10.00 for the four Mondays</b>  <b>AND/OR</b> \$12.00 for the four Mondays
Tuesday	\$2.75 per salad  <b>AND/OR</b> \$2.25 per burger	Caesar Salad with grilled chicken, served with bacon bits, croutons, skim parmesan cheese(all wrapped individually)  <b>AND/OR</b> Lean Ground Beef hamburger served on a whole wheat bun with ketchup.	<i>Both items supplied by the Old Time Catering</i>	<b>\$13.75 for the five Tuesdays</b>  <b>AND/OR</b> <b>\$11.25 for the five Tuesdays</b>
Wednesday	\$2.75 per meal	WW sub sandwich with your choice of turkey or ham and with a slice of mozza cheese. Comes with either a mayo or mustard packet. <b>Please feel free to send any veggies or other condiments from home.</b>	<i>Supplied by Old Time Catering</i>	<b>\$13.75 for the five Wednesdays per sandwich.</b>
Thursday	\$1.50 per slice	Cheese Pizza - one slice.	<i>Supplied by Angelo's Pizza</i>	<b>\$7.50 <u>Many students like to order 2 slices of pizza. You can still do this. The price would be \$15 for the 5 Thursdays.</u></b>
Friday	\$2.50 per wrap	DQ grilled chicken wrap. Served on a tortilla shell with shredded lettuce and shredded mozza/cheddar cheese.	<i>Supplied by Dairy Queen</i>	<b>\$10.00 for the four Fridays.</b>

Order Envelopes will come home on Tuesday, October 30th and are due back on Thursday, November 1st. Healthy Lunch Counters, please meet in the after school room by 8:30am on Thursday to do the order tallies. Thank you..

An easy way to stay informed is to 'friend us' on facebook and follow us on Twitter.

Fairvale Home and School

@ FairvaleHandS



**The Scholastic Bookfair** is taking place in November. Students will have a chance to visit with their classes and parents can also visit when they come to the school during the Parent Teach Conferences on Thursday evening and Friday morning.

If you were considering ordering books for your child, why not do so at the Bookfair? Also a great place to order gifts for Christmas or for birthday parties. All funds raised go to our school library.

**Novemeber 28th -November 30th**



## Watch For!

The Home and School group will be selling FES School Clothing as our Fall Fundraiser. On Monday, November 5th your child will be bringing home order forms for our Home and School fundraiser. We are very happy to be offering FES clothing again, it has been two years and the FES students and parents have asked for another opportunity to purchase.

Order forms are due back to the school on Wednesday, November 14th. The funds raised from this campaign will go towards the purchase of a second set of class laptops for our children to use at school. Thank you

**FES Santa Claus Christmas Float—Parade night— Saturday, the 24th of November.**

**Saturday, December 9th— The Home and School will offering a family friendly Christmas themed movie in the gym on Sunday, Dec 9th at 2:00pm. Any ideas for a title? Please email our fairvalehomeandschool@gmail.com**

We are collecting Canadian Tire money to help offset the cost of materials to build our FES Christmas Float. If you have any at home that you can spare, it will go to good use with our committee. Thanks



**CANADIAN TIRE®**

### Mabel's Labels

Mabel's Labels – Our online campaign will continue through this entire school year. Your family, friends, neighbours can order labels at anytime and a portion of the profits come back to us. These labels are great for hockey gear, basketball sneakers, dance uniforms, water bottles, lunch containers, ski equipment, winter gear (mitts, gloves, hats etc.) and anything else that you or your kids use! Please go to <http://www.fairvale.mabel.ca> to place your order.



mabel's labels™