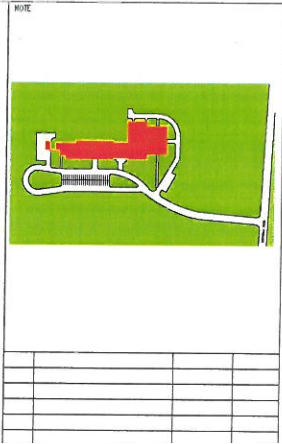


- STORAGE
- MECHANICAL / ELECTRICAL
- LABORATORIES
- WATER / SPRINKLER

PARTIAL FIRST FLOOR PLAN

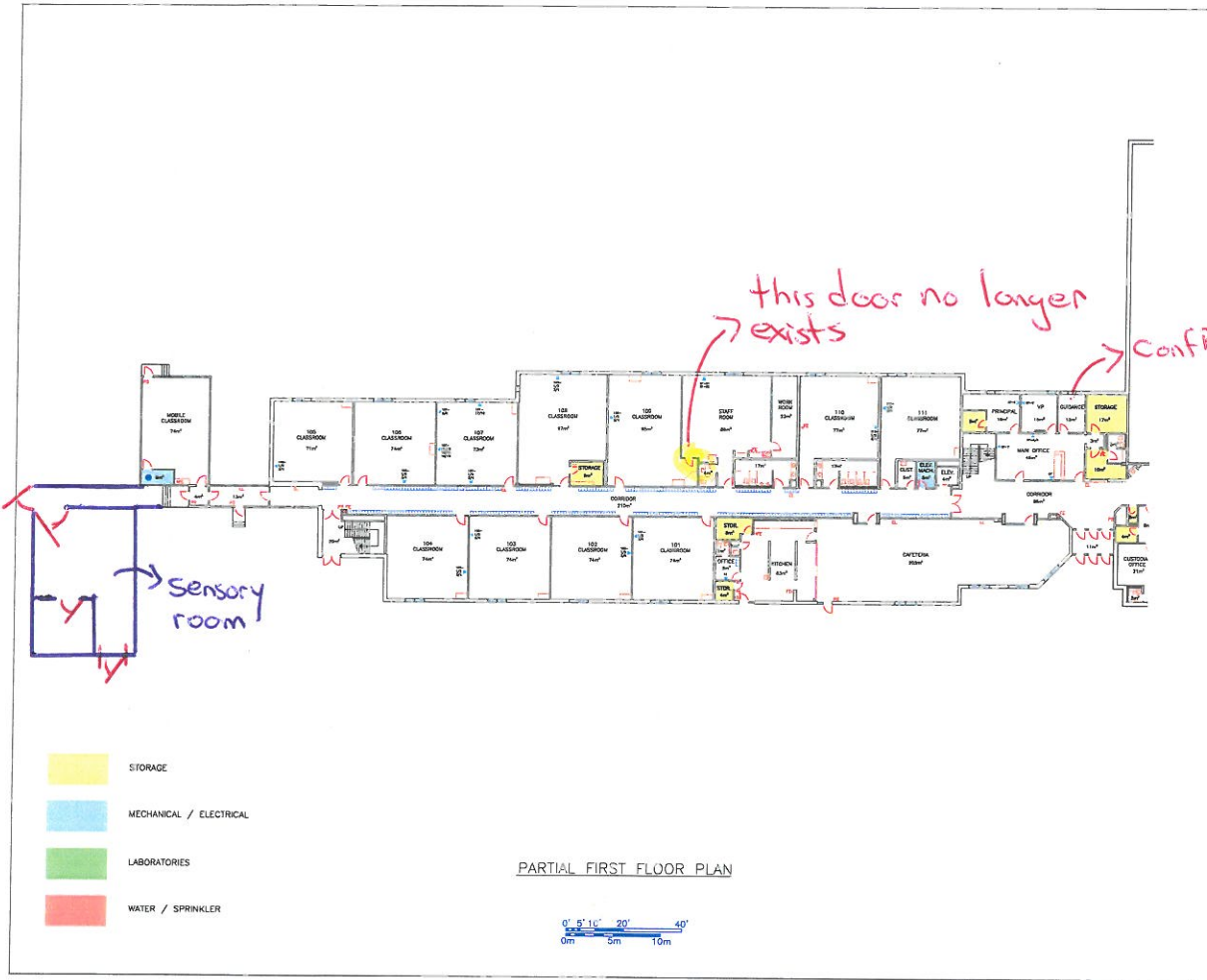


Department of Education  
Ministère de l'Éducation

**New Brunswick**

TITRE / TITLE  
Quispamsis Middle  
189 Pettingill Road  
Quispamsis, NB  
- School District 6 -

COPIE / SCALE 1/32" = 1'-0"	DATE April 8/10
DOSSIER D.A.D. / C.A.D. FILE quispamsis middle.dwg	
DESSINÉ PAR / DRAWN BY C.SIEMENS	NO DU DESSIN / DRAWING NO. A1
APPROUVÉ PAR / APPROVED BY XXXX	



this door no longer exists

Conf Room not Guidance

Sensory room

NOTE

NO.	REVISIONS / REVISIONS	DATE	PAR / BY

Department of Education  
Ministère de l'Éducation

**New Brunswick**

TITLE / TITRE  
 Quispamsis Middle  
 189 Pettingill Road  
 Quispamsis, NB  
 - School District 6 -

EGITELLE / SCALE: 1/32" = 1'-0"      DATE: April 8/10

DOSSIER D.A.G. / C.A.D. FILE: quispamsis\_mf1dc.dwg

DESIGNÉ PAR / DRAWN BY: C. STEENES      NO. DU DESSIN / DRAWING NO.:

APPROUVÉ PAR / APPROVED BY:      A2

