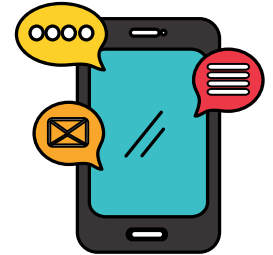




Hampton High School Communication Device Policy

Why?

Research shows that reducing social media consumption and communication device use will help build strong social connections and support mental wellness. Furthermore, by minimizing distractions caused by devices, this policy will help students be present in the lesson and engaged in their learning.



What?

The use of communication devices (i.e.: cell phones, SMART watches, headphones/earbuds, etc.) will be permitted before and after school, between classes, and during lunch. The use of communication devices will not be permitted during periods 1-5 in the classroom, including Working Period and restroom breaks.



Communication device must be put away during class time.



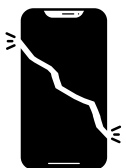
If students need to place an emergency phone call, during class time, they may do so in the office with permission from their teacher.



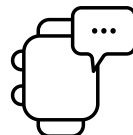
If a student needs to leave the room, communication devices must remain in the classroom.



If parents/guardians need to contact their child, in case of an emergency, they should call the school's main office: (506) 832-6024.



School staff are not responsible for the loss or damage to students' devices.



SMART watches may be worn in class, but they must be placed on "airplane mode" or "do not disturb" mode.