

Parameters

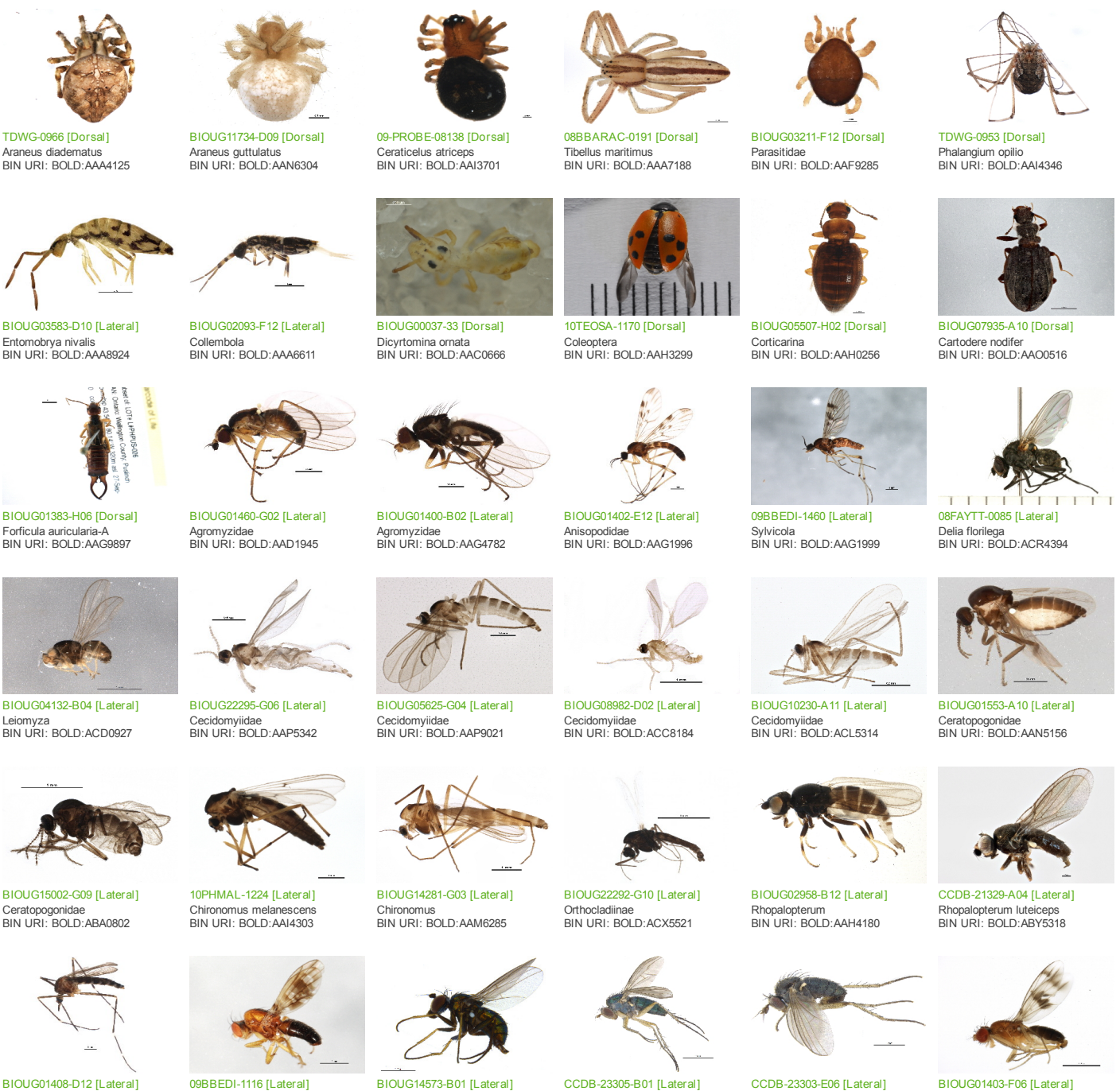
Records Included: All records
 Filter Image by Orientation: None
 Aspect Ratio: Normalized 3:2

Result Summary

Total Records: 136

Re-render images: per row

5000 Records Per Page - Pages: 1



Aedes
BIN URI: BOLD:AAC5210



BIOUG03046-F06 [Lateral]
Drosophila suzukii
BIN URI: BOLD:AAC2499

Diastata
BIN URI: BOLD:AAI6322



BIOUG01422-A12 [Lateral]
Dryomyzidae
BIN URI: BOLD:AAC6974

Chrysotus sp.
BIN URI: BOLD:AAG9668



BIOUG14574-F09 [Lateral]
Hybotidae
BIN URI: BOLD:ACC4222

Dolichopus cuprinus
BIN URI: BOLD:AAG9652



08TTL-0842 [Lateral]
Hybotidae
BIN URI: BOLD:AAN5501

Gymnotemus exilis
BIN URI: BOLD:ACW3770



BIOUG10585-E09 [Lateral]
Limonidae
BIN URI: BOLD:ACL7691

Drosophilidae
BIN URI: BOLD:AAE2703



BIOUG05549-H10 [Lateral]
Muscina pascuorum
BIN URI: BOLD:AAG1714



CCDB-23519-H10 [Lateral]
Potamia scabra
BIN URI: BOLD:ACX4627



BIOUG01364-F10 [Lateral]
Neodexiopsis calopyga
BIN URI: BOLD:AAG1769



BIOUG17053-G01 [Lateral]
Mydaea affinis
BIN URI: BOLD:AAD2891



BIOUG01645-C06 [Lateral]
Phaonia
BIN URI: BOLD:ABU9891



BIOUG01338-E07 [Lateral]
Mycetophila fungorum
BIN URI: BOLD:ACF2821



BIOUG03849-F12 [Lateral]
Sceptonia
BIN URI: BOLD:ABV3032



BIOUG01580-C10 [Lateral]
Mycetophilidae
BIN URI: BOLD:AAP6493



BIOUG03507-E04 [Lateral]
Mycetophilidae
BIN URI: BOLD:ACB6495



BIOUG21589-D01 [Lateral]
Sciophilinae
BIN URI: BOLD:ABV9017



BIOUG12690-G06 [Lateral]
Mycetophilidae
BIN URI: BOLD:ACN5852



BIOUG01302-G01 [Lateral]
Megaselia
BIN URI: BOLD:ADA3072



BIOUG14582-A08 [Lateral]
Megaselia nigriceps
BIN URI: BOLD:AAG3304



BIOUG01459-D09 [Lateral]
Conicera
BIN URI: BOLD:AAG3236



BIOUG01400-A01 [Lateral]
Coboldia fuscipes
BIN URI: BOLD:AAN8523



BIOUG05531-E11 [Lateral]
Scatopsinae
BIN URI: BOLD:ACG6999



BIOUG01389-F12 [Lateral]
Scatopsidae
BIN URI: BOLD:ABV3202



BIOUG23208-B08 [Lateral]
Bradysia trivittata
BIN URI: BOLD:AAH3947



BIOUG03782-C06 [Lateral]
Corynoptera
BIN URI: BOLD:ACB7219



BIOUG09778-D03 [Lateral]
Lestremioides
BIN URI: BOLD:ACC8344



BIOUG07887-E12 [Lateral]
Scatopsiara atomaria
BIN URI: BOLD:AAH3920



BIOUG07126-D10 [Lateral]
Sciaridae
BIN URI: BOLD:AAM9241



JSYKB-180 [Lateral]
Sphaerophoria
BIN URI: BOLD:AA47374



10BBDIP-1405 [Frontal]
Toxomerus marginatus
BIN URI: BOLD:AAA4277



BIOUG03689-H04 [Lateral]
Toxomerus teliger
BIN URI: BOLD:ABW8043



BIOUG07964-G10 [Lateral]
Spathidexia dunningii
BIN URI: BOLD:AAF2716



CNC DIPTERA 192379 [Lateral]
Tipula paludosa
BIN URI: BOLD:AAE7386



BIOUG01621-H08 [Lateral]
Aleyrodoidea
BIN URI: BOLD:AAZ8499



BIOUG00806-A04 [Dorsal]
Anocia fulviabdominalis
BIN URI: BOLD:AAH2871



NIBGE APH-00163 [Dorsal]
Rhopalosiphum padi
BIN URI: BOLD:AAA9899



BIOUG01607-C09 [Lateral]
Schizaphis graminum
BIN URI: BOLD:ACI4702



10BBCHEM-1209 [Dorsal]
Acyrthosiphon pisum
BIN URI: BOLD:AAB1787



10BBCHEM-0126 [Dorsal]
Euceraphis papyrifera
BIN URI: BOLD:AAH2870



BIOUG00856-G02 [Lateral]
Lepyrionia quadrangularis
BIN URI: BOLD:AAG8827



HLC-17477 [Lateral]
Prescottia lobata
BIN URI: BOLD:AAY6739



BIOUG05609-A08 [Dorsal]
Erythrulida
BIN URI: BOLD:AAN8285



BIOUG00836-D05 [Lateral]
Asobara
BIN URI: BOLD:ACF3747



BIOUG10452-H09 [Lateral]
Alysinae
BIN URI: BOLD:AAH3190



BIOUG10534-D01 [Lateral]
Dinotrema
BIN URI: BOLD:ACF6586



ASGLE-1143 [Lateral]
Alysinae
BIN URI: BOLD:AAU8592



BIOUG31049-D05 [Lateral]
Spathicopsis flavocephala
BIN URI: BOLD:ACV6121



BIOUG06752-D10 [Lateral]
Braconidae
BIN URI: BOLD:AAG1084



BIOUG01327-A11 [Lateral]
Trichopria
BIN URI: BOLD:ABA5937



ASGLE-1229 [Lateral]
Hymenoptera
BIN URI: BOLD:AAM7487



BIOUG03946-E12 [Lateral]
Diapriidae
BIN URI: BOLD:AA7572



BIOUG02720-A02 [Dorsal]
Metaphycus groenlandicus
BIN URI: BOLD:ABW3245



BIOUG09507-H05 [Lateral]
Encyrtidae
BIN URI: BOLD:ACK5989



BIOUG31049-D08 [Lateral]
Eulophidae
BIN URI: BOLD:ADE1740



MAS145-08c [Lateral]
Formica
BIN URI: BOLD:AAE0406



BIOUG05507-D08 [Lateral]
Lasius neoniger
BIN URI: BOLD:AAB9126



09BBEFO-0388 [Lateral]
Formica glacialis
BIN URI: BOLD:AAA1468



CNCHYM 05306 [Lateral]
Campoplex flavicincta
BIN URI: BOLD:AAZ8146



BIOUG00861-F11 [Lateral]
Cymodusa distincta
BIN URI: BOLD:ABZ4363



10BBCHY-2601 [Lateral]
Cryptinae
BIN URI: BOLD:AAF1382



ASGLE-0939 [Lateral]
Ichneumonidae
BIN URI: BOLD:AAG7744



BIOUG00761-D07 [Lateral]
Cryptinae
BIN URI: BOLD:AAH1620



ASGLE-0506 [Lateral]
Hymenoptera
BIN URI: BOLD:AAU8487



BIOUG00854-G06 [Lateral]
Cryptinae
BIN URI: BOLD:ABY7035



BIOUG01032-A09 [Lateral]
Ichneumoninae
BIN URI: BOLD:AAH7265



09BBEHY-0477 [Lateral]
Ichneumoninae
BIN URI: BOLD:AAH7278



ASGLE-0753 [Lateral]
Ichneumonidae
BIN URI: BOLD:ACE8616



BIOUG08436-C12 [Lateral]
Ophion
BIN URI: BOLD:AAH1753



09BBEHY-0352 [Lateral]
Ophion
BIN URI: BOLD:AAI3377



BIOUG03336-F06 [Lateral]
Megastylus
BIN URI: BOLD:ACE4233



CNCHYM 09926 [Lateral]
Apechthis ontario
BIN URI: BOLD:AAA9338



09BBHYM-646 [Lateral]
Zaglyptus varipes
BIN URI: BOLD:AAG0382



07PROBE-22932 [Lateral]
Phytodietus
BIN URI: BOLD:AAG0379



BIOUG07143-E01 [Lateral]
Megaspilidae
BIN URI: BOLD:ACG4735



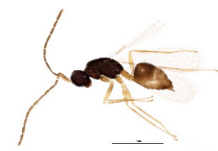
BIOUG01665-F07 [Lateral]
Megaspilidae
BIN URI: BOLD:ACJ1039



BIOUG01665-H07 [Lateral]
Anaphes
BIN URI: BOLD:AAZ0173



BIOUG01668-E07 [Lateral]
Anaphes
BIN URI: BOLD:ABV2680



BIOUG01601-C03 [Lateral]
Ooctonus
BIN URI: BOLD:ABV2677



BIOUG22723-F03 [Lateral]
Telenomus
BIN URI: BOLD:AAU8347



BIOUG12712-D09 [Lateral]
Telenomus
BIN URI: BOLD:ACN3895



BIOUG01665-A10 [Lateral]
Scelioninae
BIN URI: BOLD:ABA6154



BIOUG01280-G10 [Lateral]
Scelioninae
BIN URI: BOLD:ABV2752



BIOUG03412-A10 [Lateral]
Scelioninae
BIN URI: BOLD:ACA9176



BIOUG01017-C03 [Lateral]
Pteromalidae
BIN URI: BOLD:AAZ6758



BIOUG02619-H10 [Lateral]
Pteromalidae
BIN URI: BOLD:ABY2912



BIOUG07197-D03 [Lateral]
Pteromalidae
BIN URI: BOLD:ACI2812



CCDB-28947-A04 [Lateral]
Macremphytus tarsatus
BIN URI: BOLD:AAG3552



BIOUG02984-C11 [Lateral]
Trichogramma platneri
BIN URI: BOLD:AAE0242



BIOUG01081-H11 [Lateral]
Vespa maculifrons
BIN URI: BOLD:AAD5593



CCDB-22978-A09 [Dorsal]
Bucculatrix pomifoliella
BIN URI: BOLD:AAD2085



RBMS-1101 [Dorsal]
Hypena scabra
BIN URI: BOLD:AAA4222



AC005001 [Dorsal]
Caloptilia coroniella
BIN URI: BOLD:AAC1801



CNCLPE00042418 [Dorsal]
Caloptilia
BIN URI: BOLD:AAE3468



BIOUG31049-F09 [Lateral]
Caloptilia
BIN URI: BOLD:ADE2289



MM25284 [Dorsal]
Phyllocnistis labyrinthella
BIN URI: BOLD:ACX5473



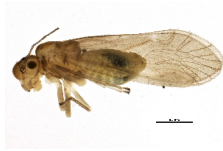
DNA-ATBI-7005 [Dorsal]
Acleris macdunnoughi
BIN URI: BOLD:AAA7793



BIOUG02004-G02 [Lateral]
Melanoplus
BIN URI: BOLD:AAA4555



10BBSIO-0116 [Lateral]
Valenzuela flavidus
BIN URI: BOLD:AAH3228



BIOUG04218-E11 [Lateral]
Valenzuela
BIN URI: BOLD:ACR3866



BIOUG03566-A05 [Dorsal]
Echmepteryx hageni
BIN URI: BOLD:AAP4625



TDWG-0261 [Lateral]
Limnephilus submonilifer
BIN URI: BOLD:AAA3080