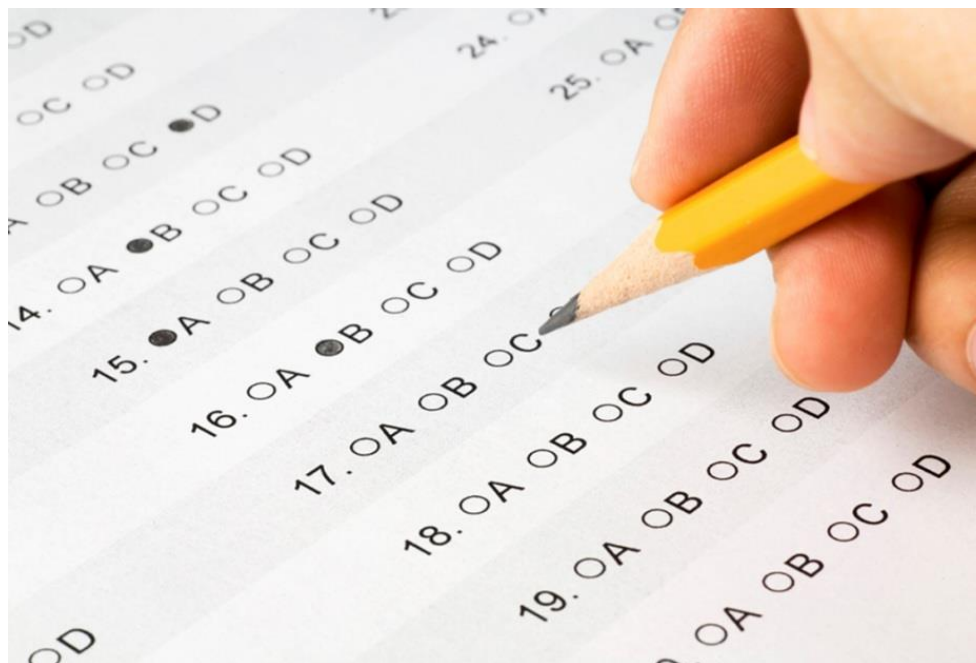


# Provincial Assessment Results 2013-2014



Assessment and Evaluation Branch (Anglophone Division)  
Department of Education and Early Childhood Development

# 2013-2014 Provincial Assessment Results

## LITERACY



# READING

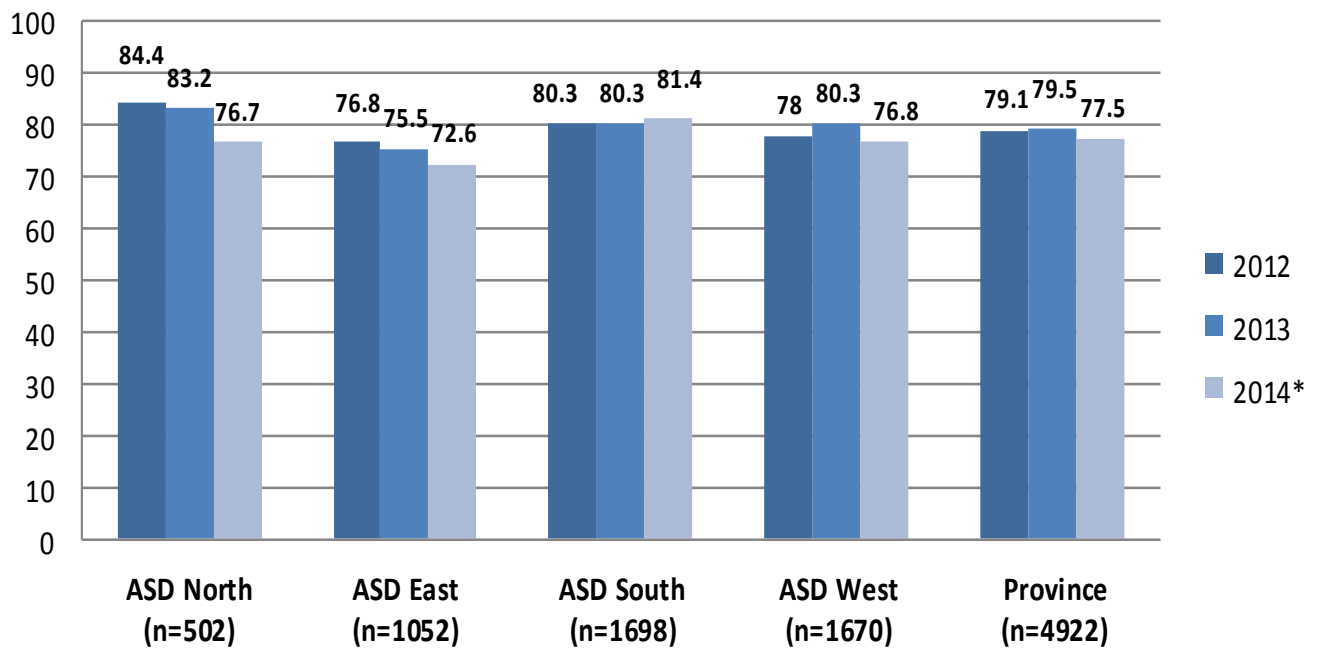
## Grade 2 English

### DISTRICT DATA

School Districts by the percentage of students achieving at the appropriate or above levels for 2012-2014.

The number of students for each School District can be found in the brackets.

**Provincial Reading Assessment at Grade 2**  
**Percentage of Students at Appropriate or Above by District**



# READING

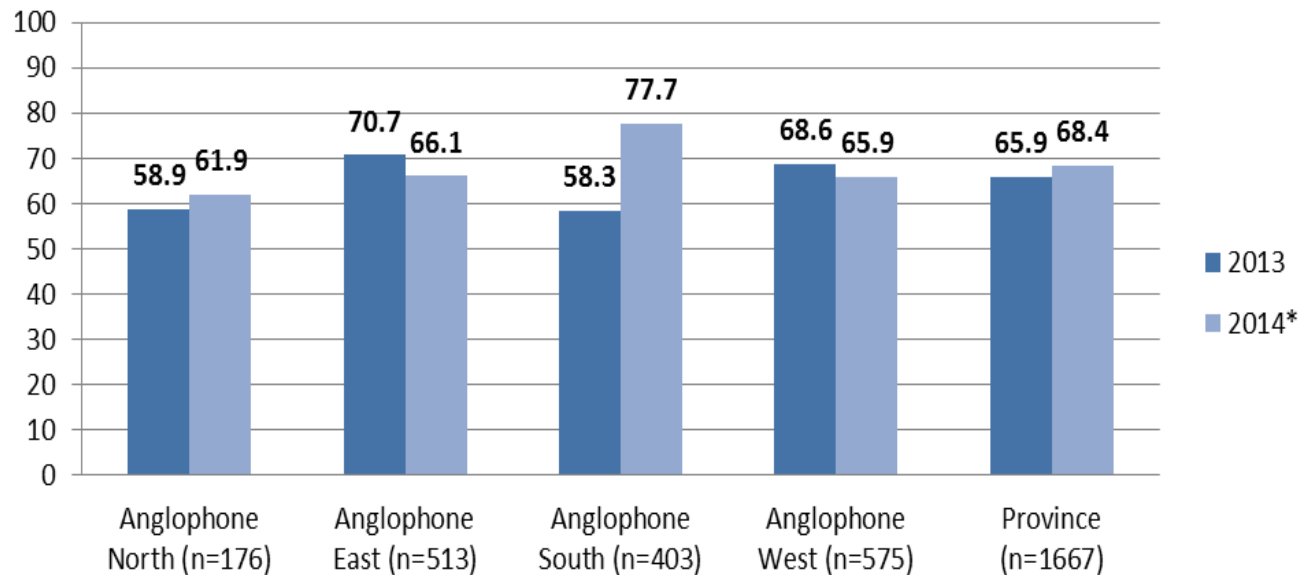
## Grade 4 French Immersion

### DISTRICT DATA

School Districts by the percentage of students achieving at the appropriate or above levels for 2012-2014.

The number of students for each School District can be found in the brackets.

**Provincial Reading Assessment at Grade 4 (French Immersion)**  
**Percentage of Students at Appropriate Achievement or Higher:**  
**District Data**



# WRITING

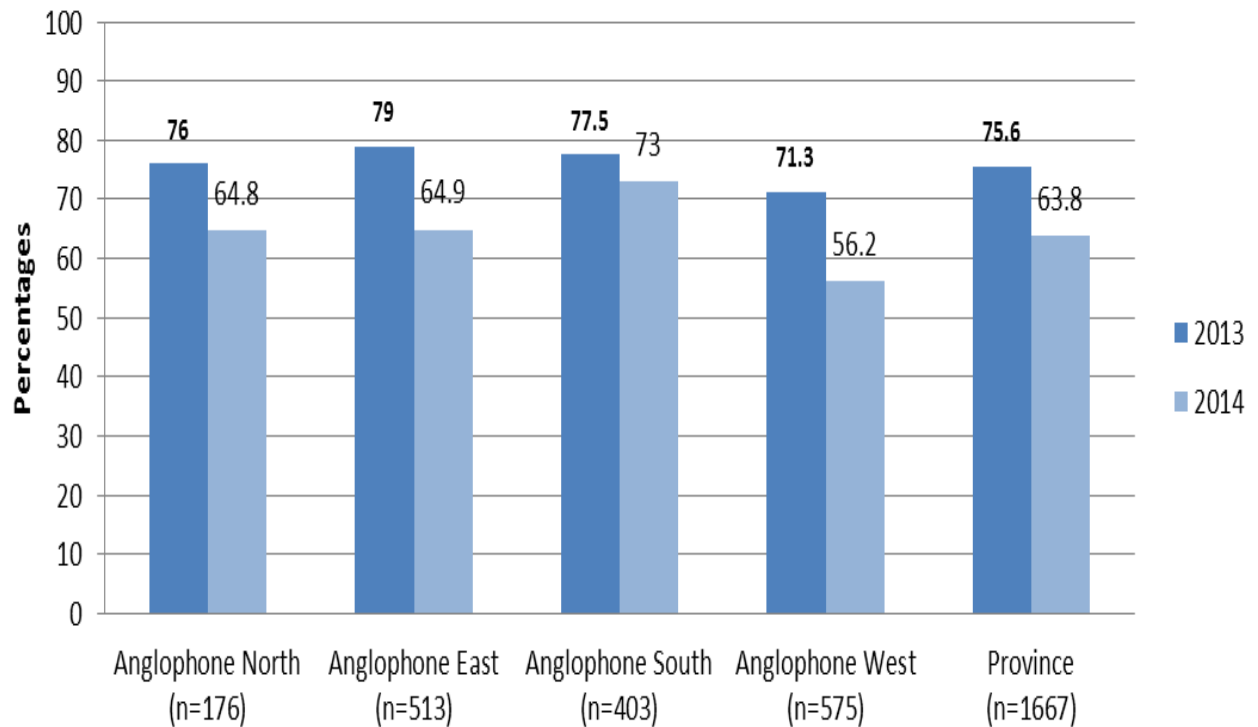
## Grade 4 French Immersion

### DISTRICT DATA

School Districts by the percentage of students achieving at the appropriate or above levels.

The number of students for each School District can be found in the brackets.

**Provincial Writing Assessment at Gade 4 (French Immersion)  
Percentage of Students at Appropriate and Above: District Data**

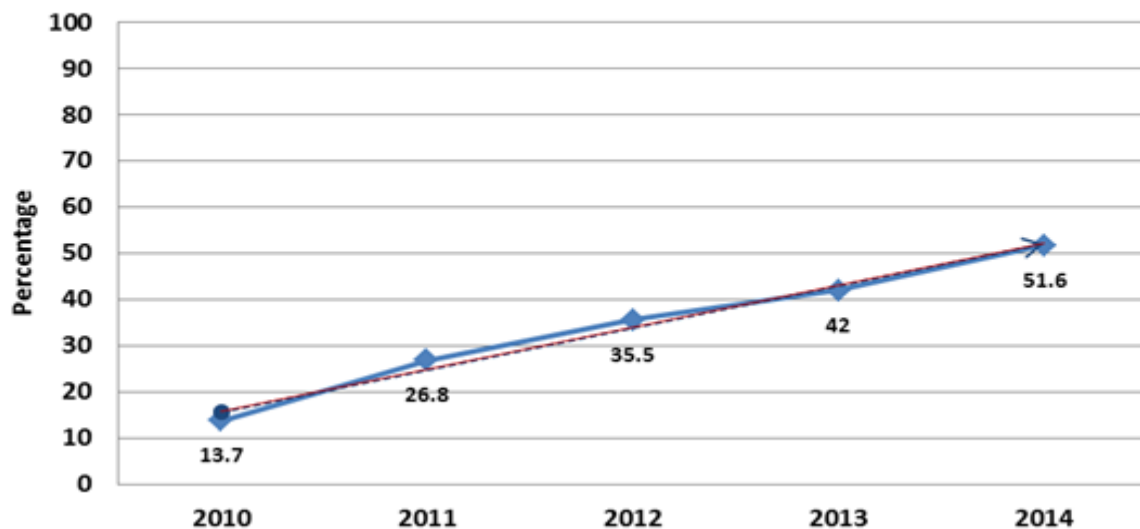


# WRITING

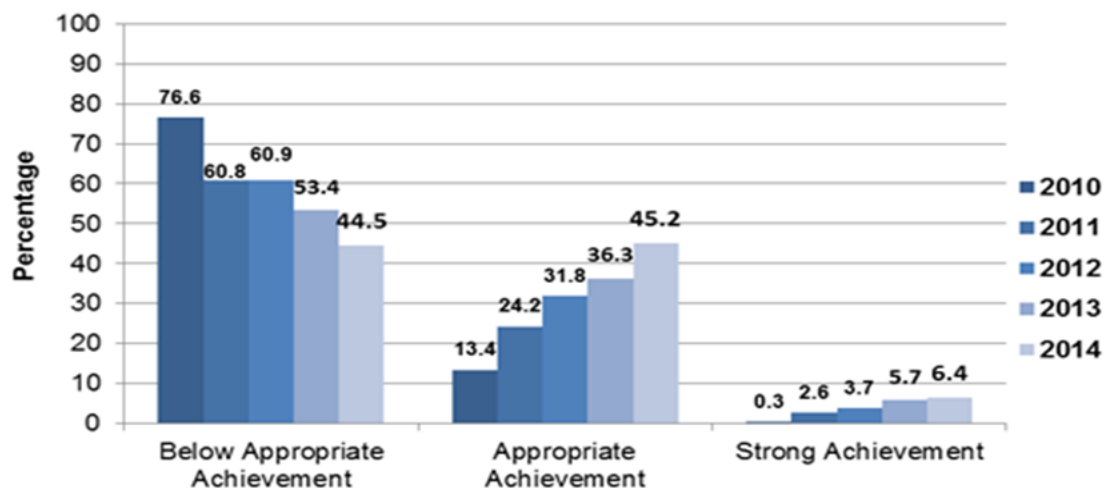
## Grade 5 Intensive French

- 578 (20% sample) Grade 5 IF students
- 51.5% met or exceeded the appropriate achievement level in reading
- **decrease of 2.0** percentage points.
- 45.2% Appropriate Achievement
- 6.4% Strong Achievement

Provincial Grade 5 Intensive French Writing Students at *Appropriate* or Above



Provincial Intensive French Assessment at Grade 5 (Writing) Achievement Levels



# READING

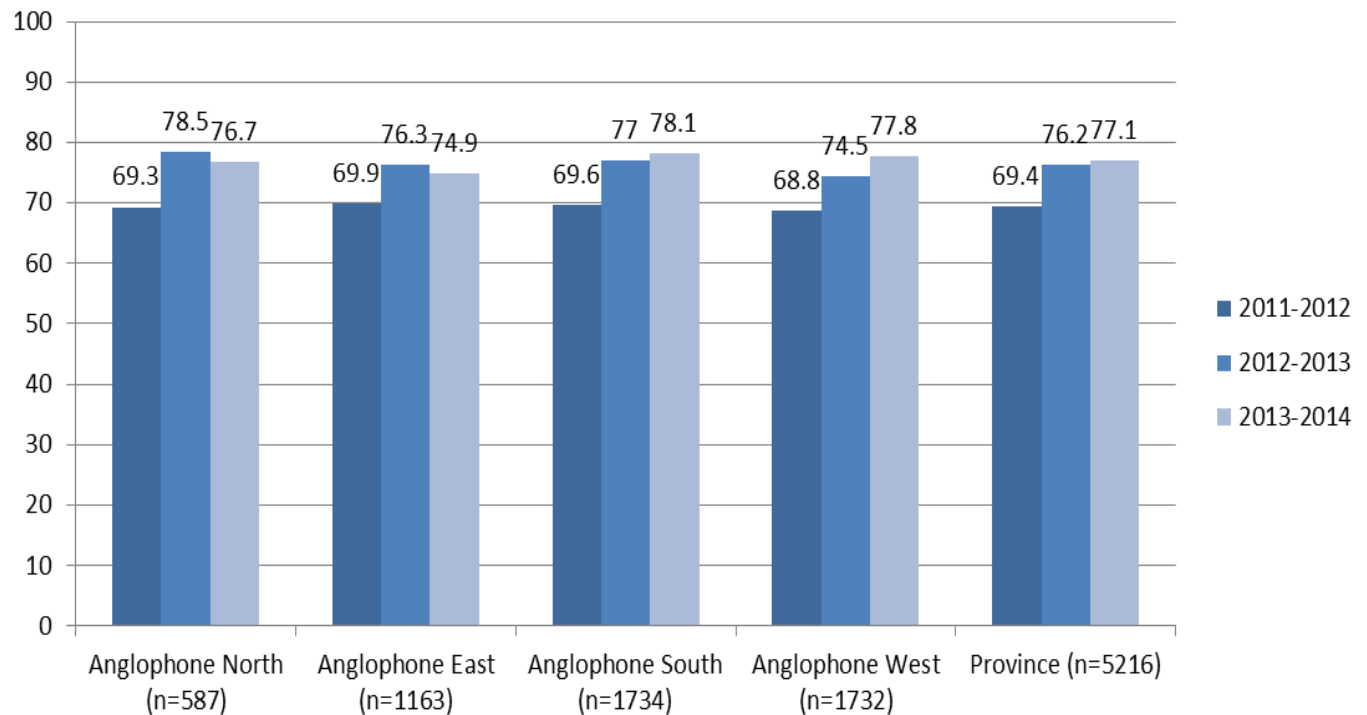
## Grade 7 English

### DISTRICT DATA

School Districts by the percentage of students achieving at the appropriate or above levels for 2012-2014.

The number of students for each School District can be found in the brackets.

**Provincial Literacy Assessment at Grade 7: Reading  
Percentage of Students at Appropriate or Above by District**



# WRITING

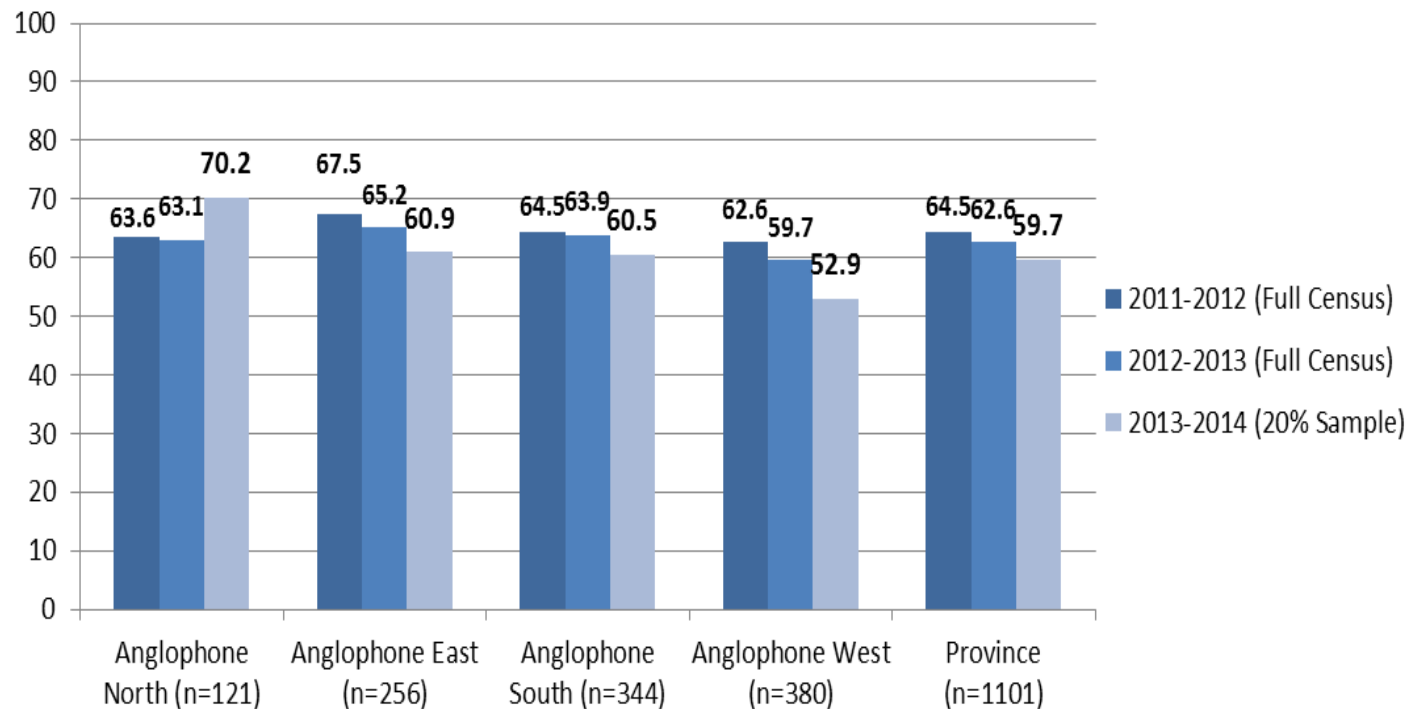
## Grade 7 English

### DISTRICT DATA

School Districts by the percentage of students achieving at the appropriate or above levels for 2011-2014.

The number of students for each School District can be found in the brackets.

**Provincial Literacy Assessment at Grade 7: Writing**  
**Percentage of Students at Appropriate or Above by District**



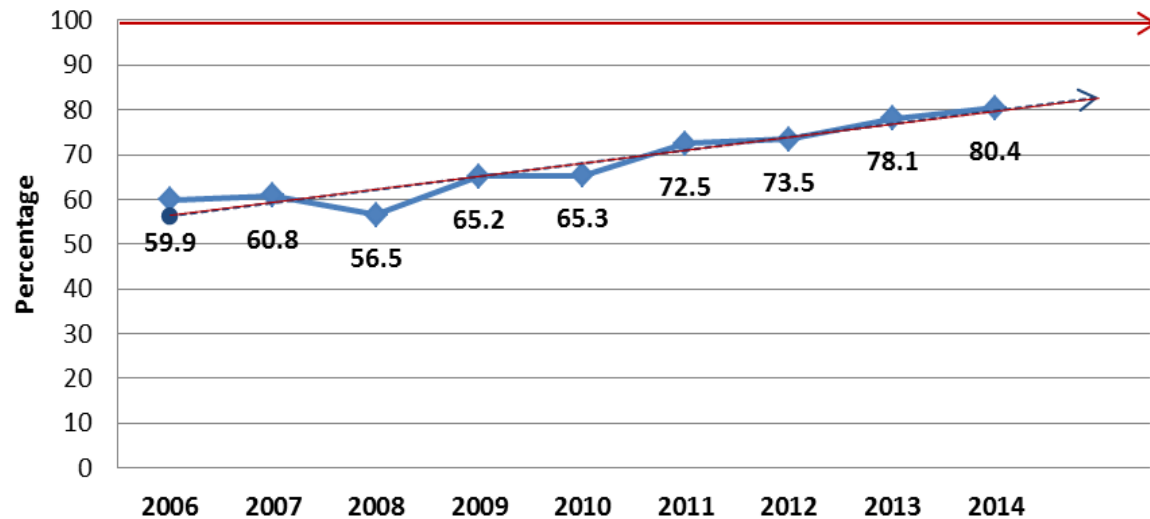


# READING

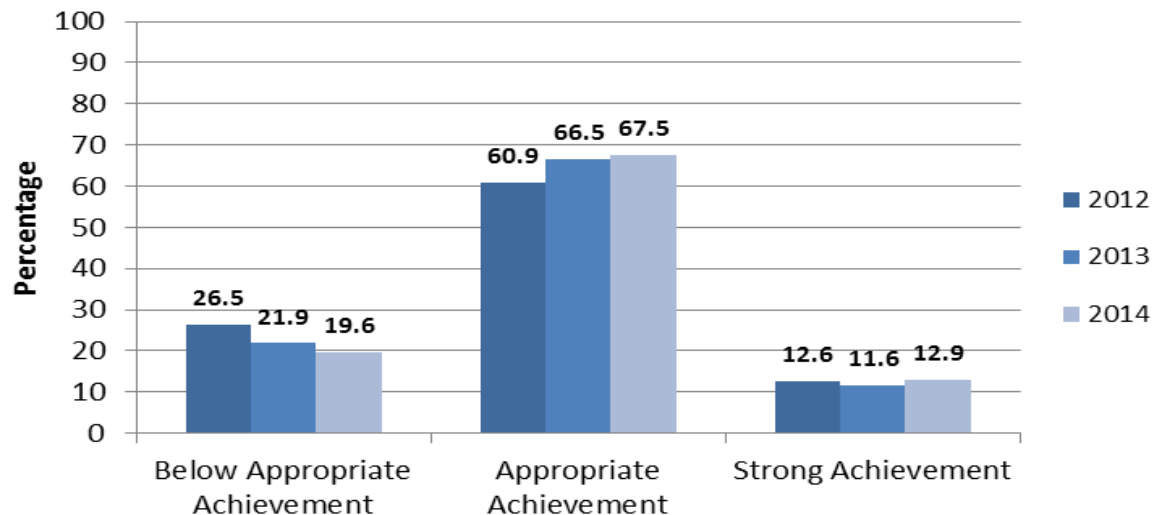
## Grade 9 English Language Proficiency Assessment

- Graduation Requirement
- 5431 ninth graders
- 80.4% met or exceeded the appropriate achievement level in reading
- **increase of 2.3** percentage points.
- 67.5% Appropriate Achievement
- 12.9% Strong Achievement

### English Language Proficiency Assessment: Reading Students at Appropriate or Above



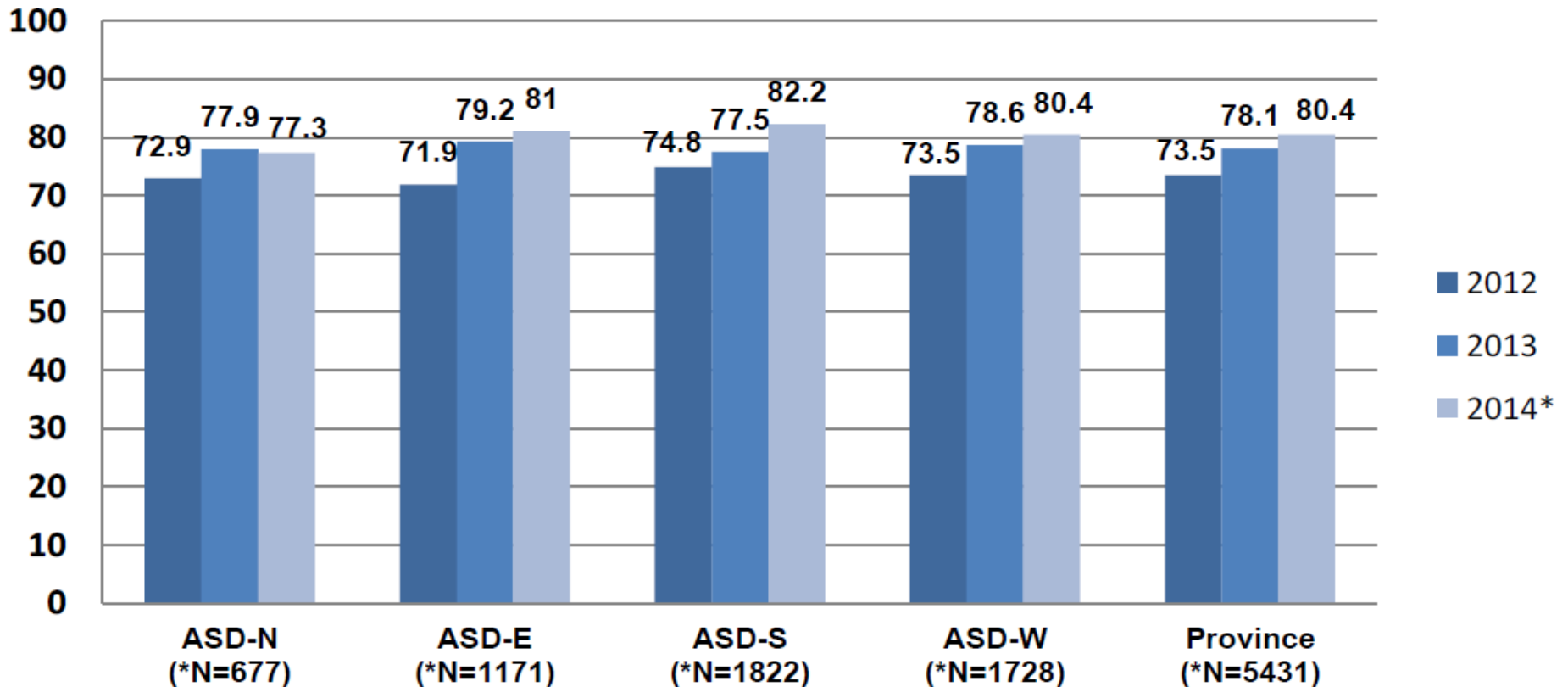
### English Language Proficiency Assessment: Reading Achievement Levels



# READING

## Grade 9 English Language Proficiency Assessment

English Language Proficiency Assessment: Reading  
Percentage of Students at Appropriate or Higher  
District Data

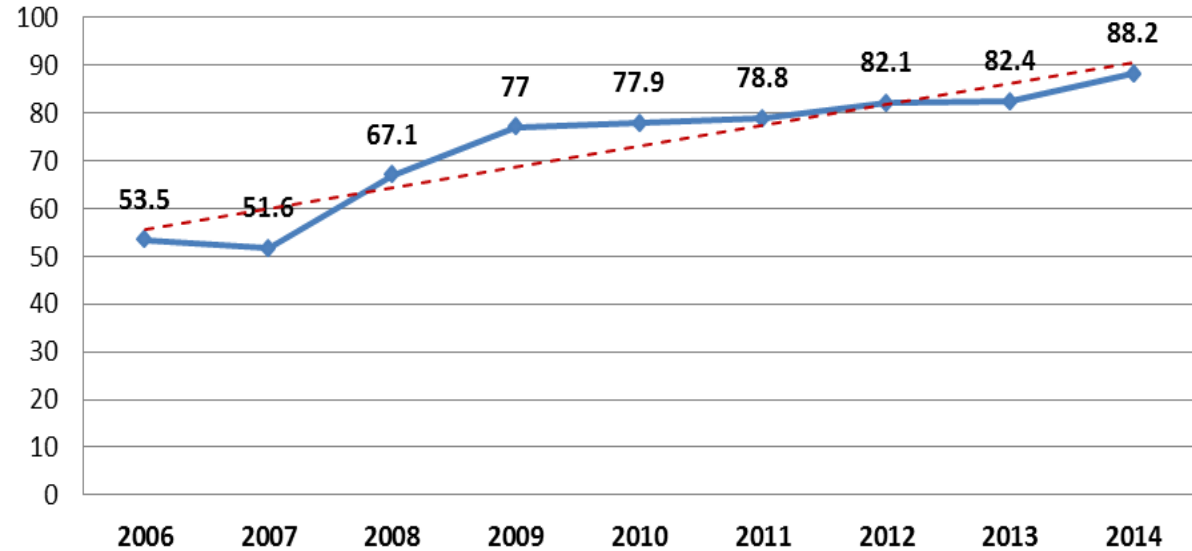


# WRITING

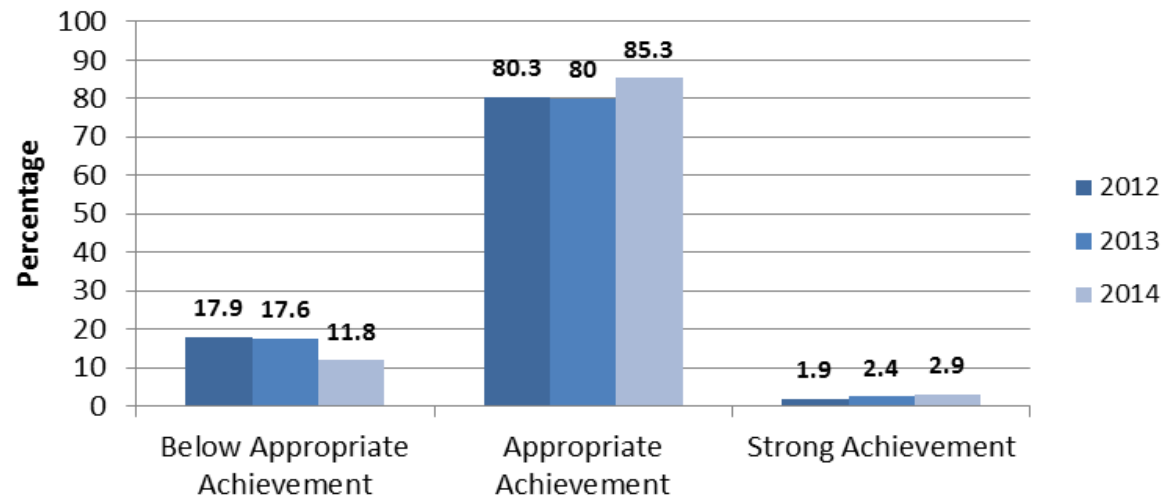
## Grade 9 English Language Proficiency Assessment

- Graduation Requirement
- 5420 ninth graders
- 88.2% met or exceeded the appropriate achievement level in reading
- **increase of 5.8** percentage points.
- 85.3% Appropriate Achievement
- 2.9% Strong Achievement

English Language Proficiency Assessment: Writing  
Percentage of Students at Appropriate or Above



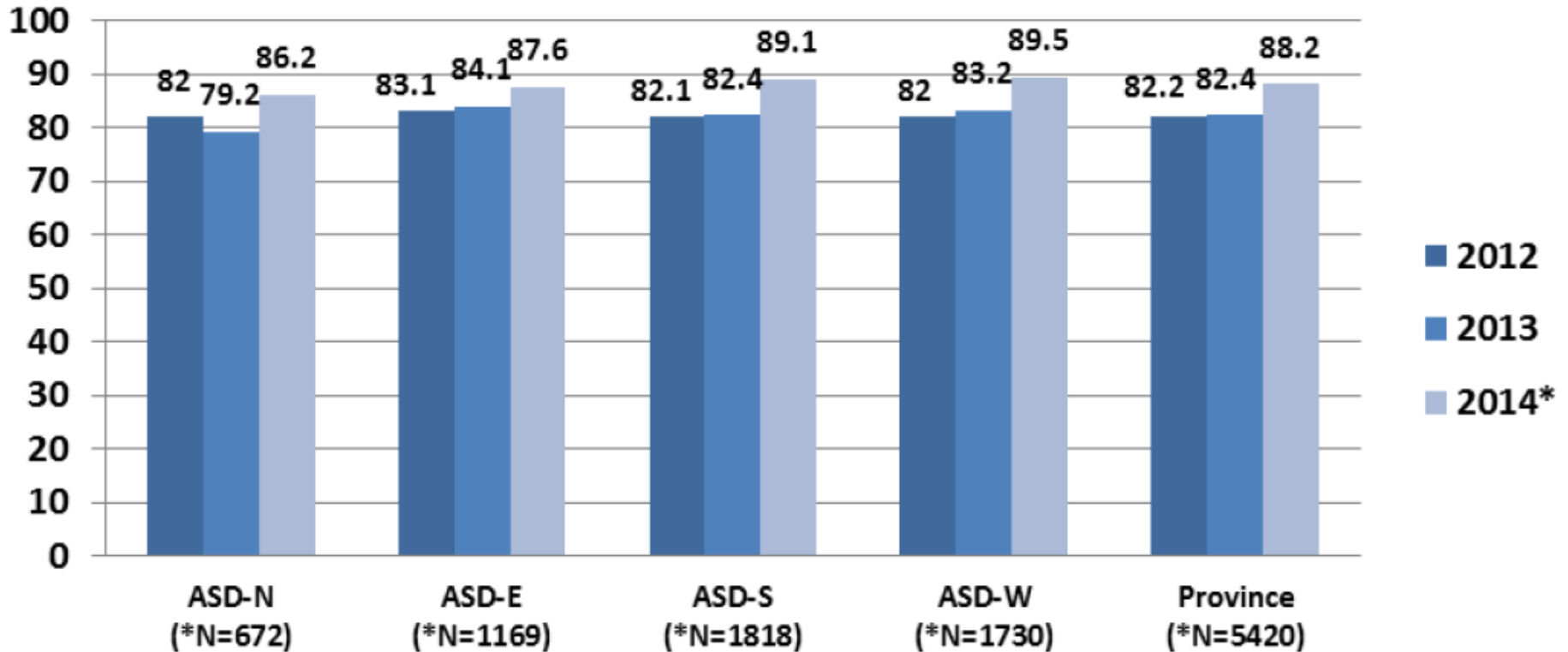
English Language Proficiency Assessment: Writing  
Achievement Levels



# WRITING

## Grade 9 English Language Proficiency Assessment

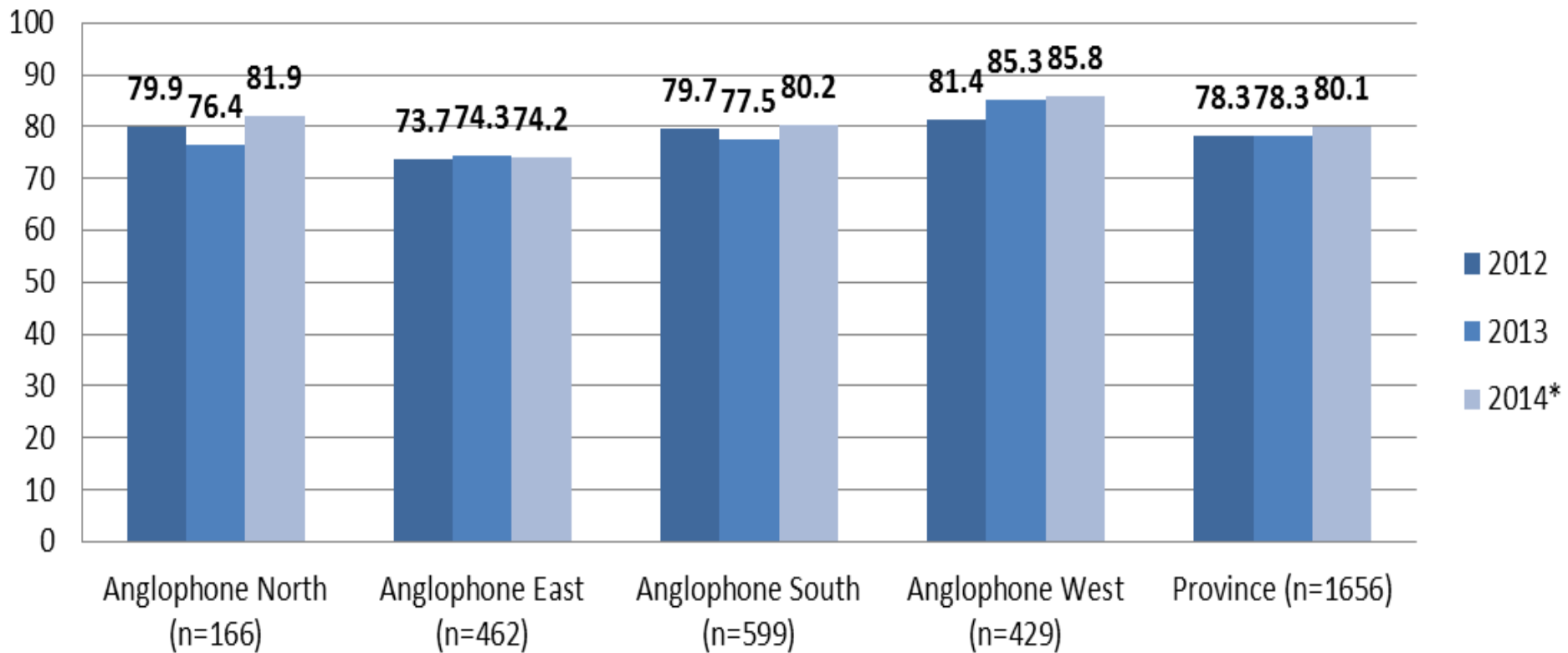
English Language Proficiency Assessment: Writing  
Percentage of Students at Appropriate or Higher  
District Data



# READING

## Grade 10 French Immersion

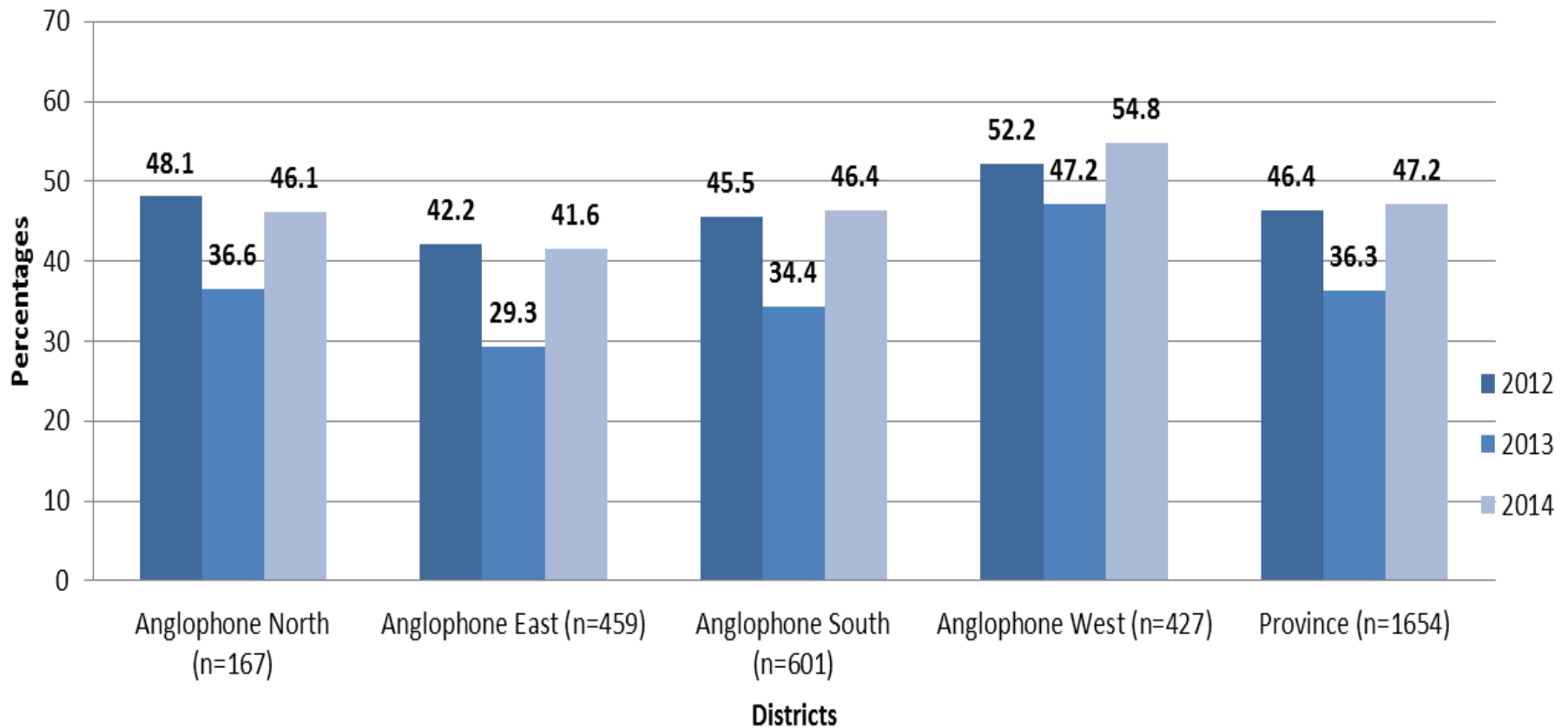
Provincial Literacy Assessment at Grade 10 (FI)  
Reading Achievement by District



# WRITING

## Grade 10 French Immersion

Provincial Literacy Assessment at Grade 10 (FI)  
Writing Achievement by District

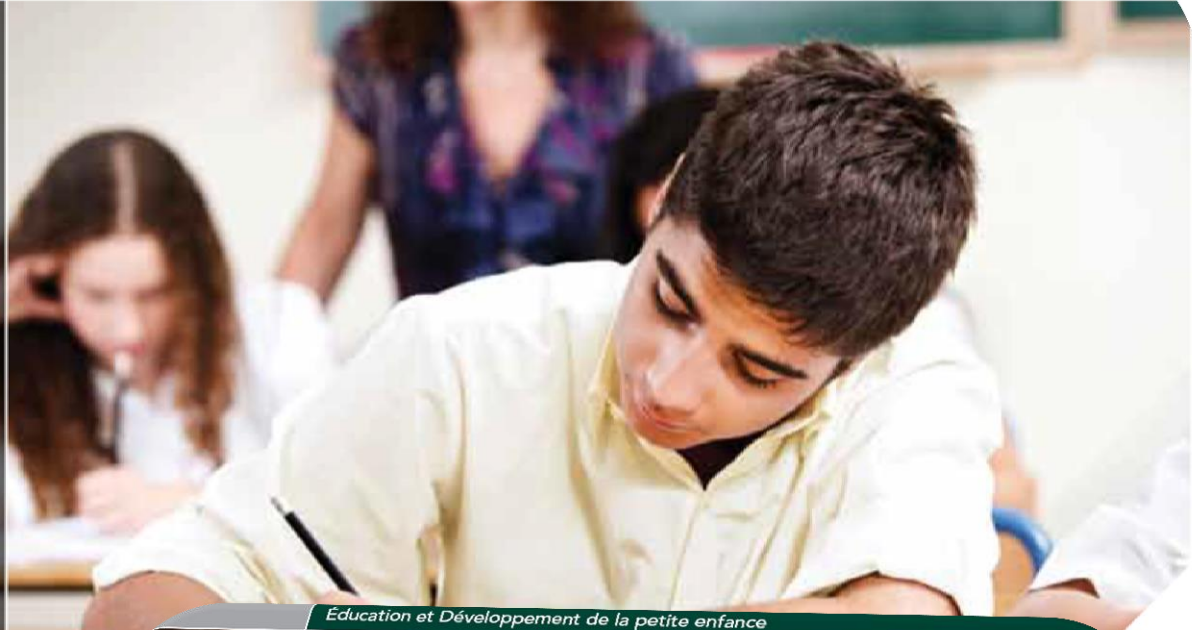


# 2013-2014 Provincial Assessment Results

## MATHEMATICS

Grade 8

Education and Early Childhood Development



Éducation et Développement de la petite enfance

5<sup>e</sup> année



# MATHEMATICS

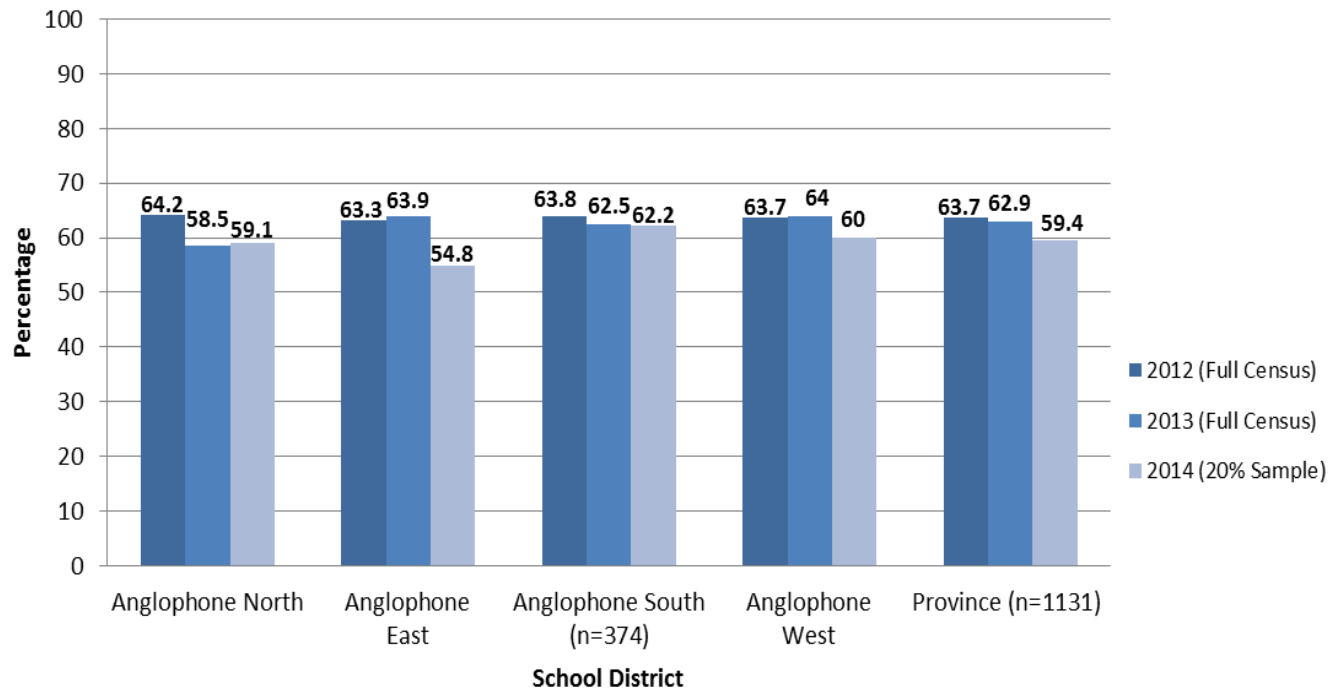
## Grade 5

### DISTRICT DATA

School Districts by the percentage of students achieving at the appropriate or above levels.

The number of students for each School District can be found in the brackets. .

**Provincial Mathematics Assessment at Grade 5 Percentage of Students at Appropriate Achievement or Higher: District Data**



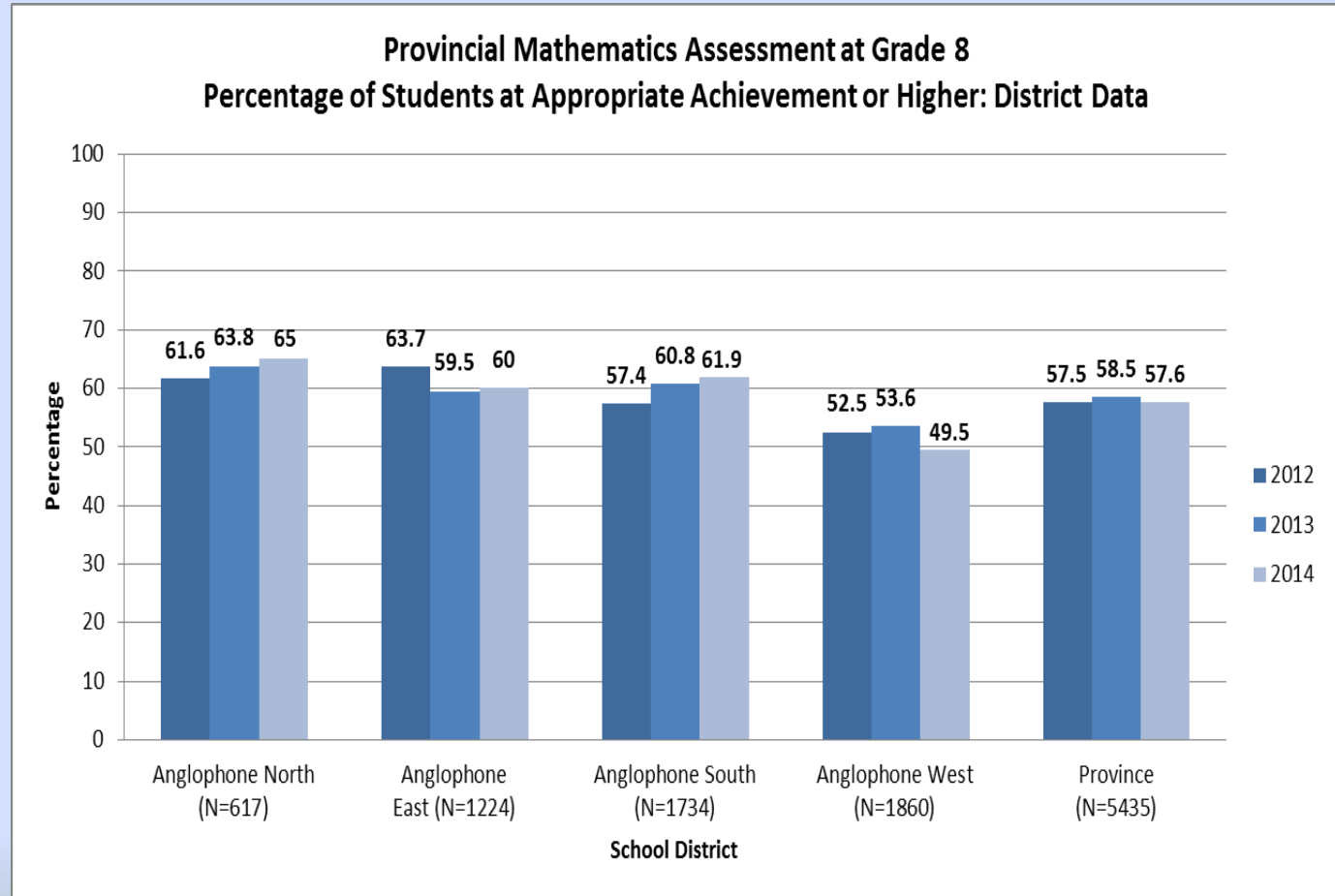


# MATHEMATICS

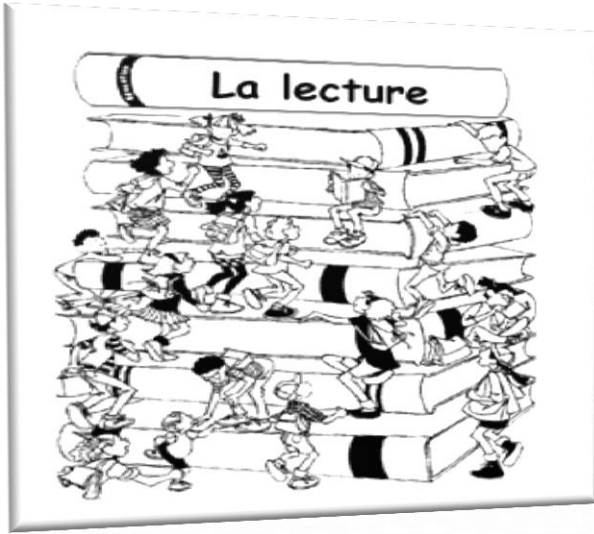
## Grade 8

School Districts by the percentage of students at the appropriate or above levels for 2012-2014.

The number of students for each School District can be found in the brackets.



# 2013-2014 French Second Language Oral Proficiency Results

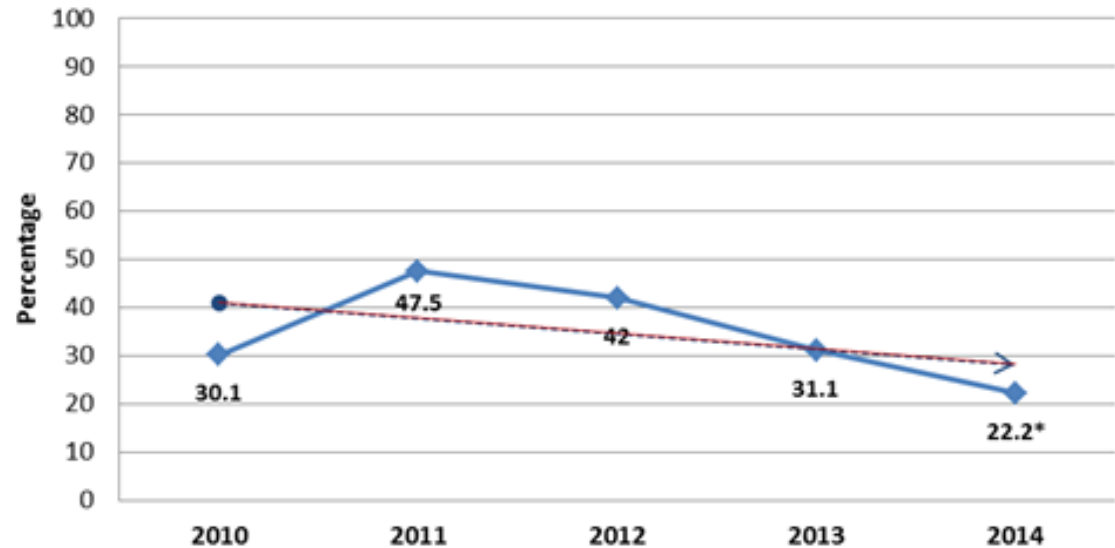


# ORAL PROFICIENCY

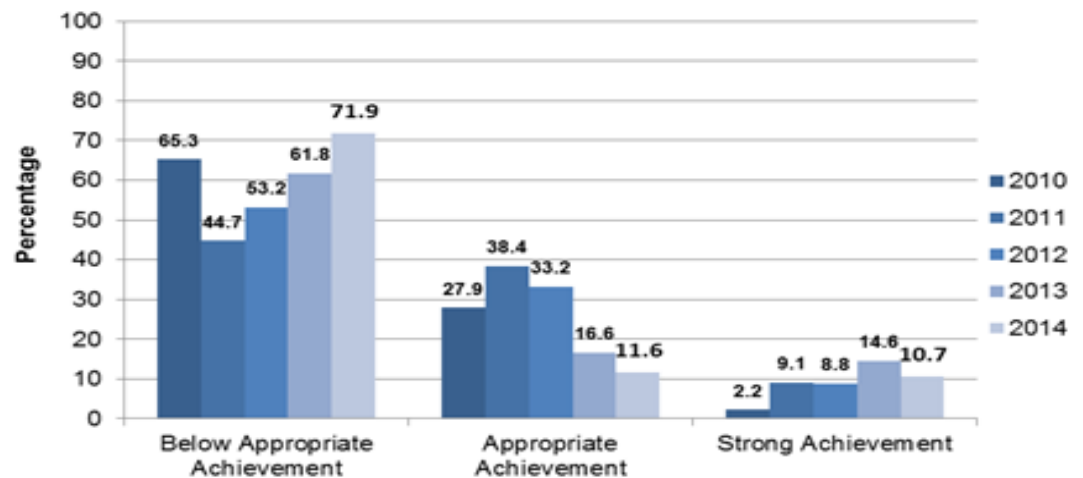
## Grade 5 IF

- 576 students (20% sample)
- 22.2% ( $\pm 3.6$ ) of achieved or surpassed the target of *Basic Low* in oral proficiency
- 11.6% achieved Basic Low
- 10.7% surpassed Basic Low

Grade 5 Intensive French Oral Proficiency  
Students at *Basic Low* or Above



Provincial Intensive French Assessment  
at Grade 5 (Oral Proficiency)  
Achievement Levels

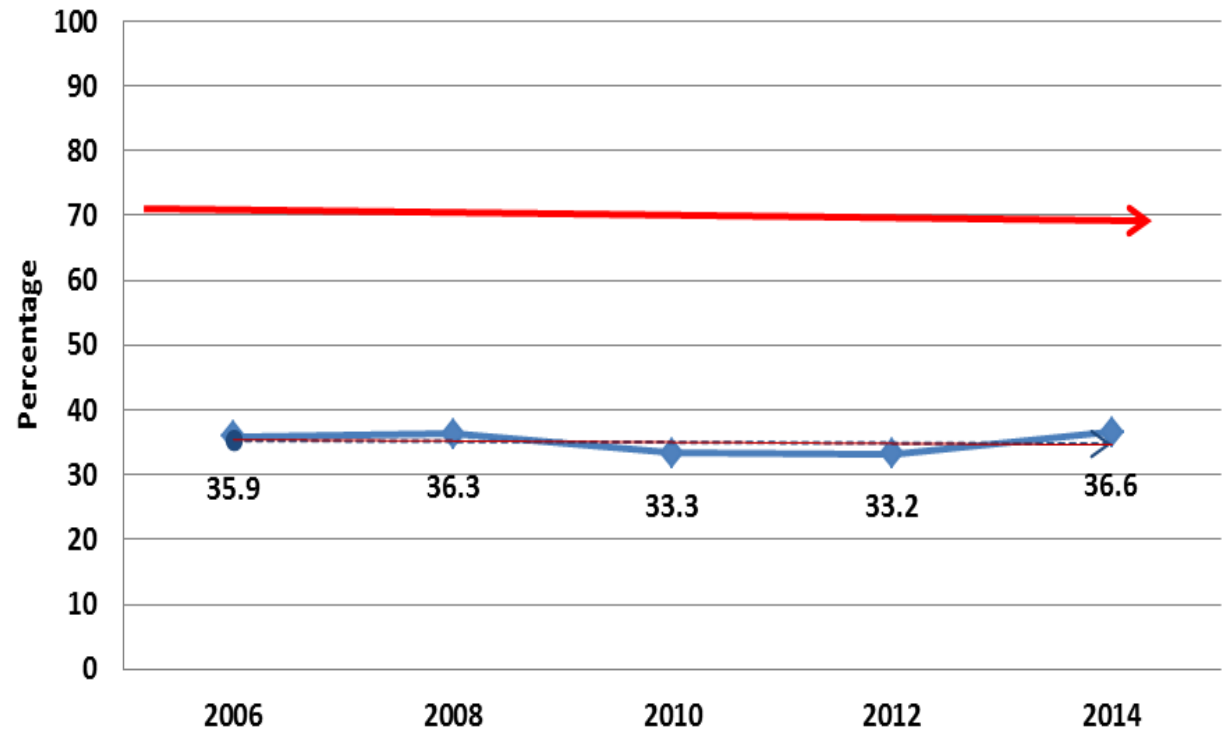


# ORAL PROFICIENCY

## Grade 10 FSL

- Biennial measure
- Target: 70% of high school graduates speak French at Intermediate level or higher.
- 10% sample stratified by program
- 36.6% of all students performed at the Intermediate or above level.

**Grade 10 FSL Oral Proficiency**  
**Percentage of Students at Appropriate or Above**



# ORAL PROFICIENCY

## Grade 12 FSL Certification

### PROGRAM GOALS

- Core French program - *Intermediate* level on the New Brunswick Oral Proficiency Scale.
- Late French Immersion program is the *Intermediate Plus* level
- Early French Immersion program is the *Advanced* level

\*NB - As participation in this assessment is voluntary, the population assessed is not a valid representation of the provincial G12 student population.

2013-14 FSL Oral Proficiency Interview Program Grade 12  
Achievement Levels by Program

