

Assessment Results 2014-2015

ASD-S

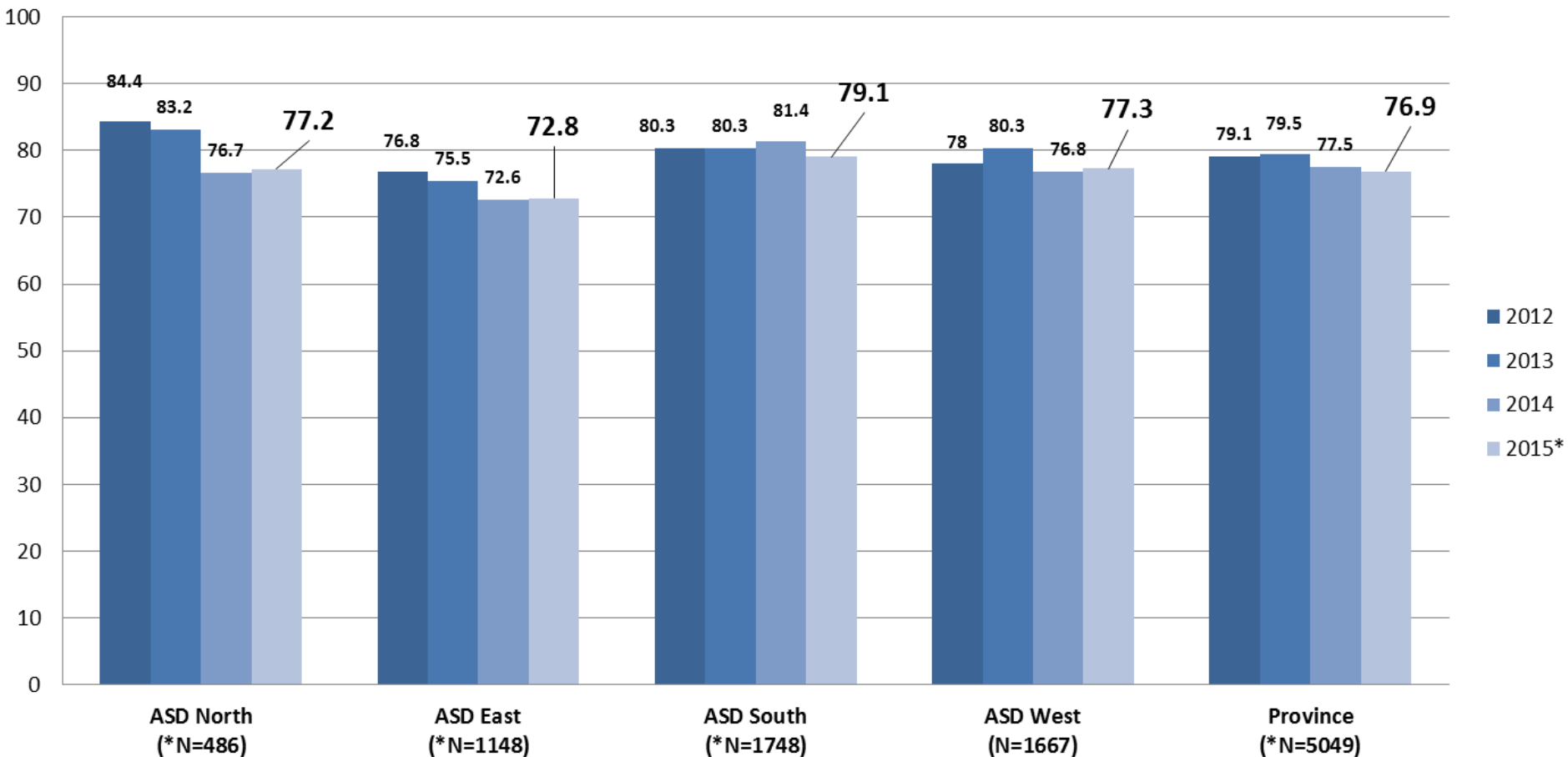


2014-2015 Assessments			
Grade	Type	Administration	Report
LITERACY ASSESSMENTS - Provincial			
2	Reading	Spring 2015	Student, School & District
9	Reading & Writing	January 2015	Student, School & District
Mathematics (Provincial)			
8	All Strands	Spring 2015	District
French Second Language - Provincial			
6	Oral	March 2015	Field Testing – No Results
12	Oral	1 st & 2 nd Semester	Student, District & EECD
Annual Aligned Measures - Provincial			
6	Reading, Math & Science	Spring 2015	TBA Survey
10	Reading, Math & Science	Spring 2015	Field Testing – No Results
Programme for International Student Assessment (PISA) - International			
15-Year-Old Students	Reading, Math & Science	Spring 2015	International, National (Dec 2016) & Provincial
The Progress in International Reading Literacy Study (PIRLS) - International			
4	Reading	Spring 2015	International, National & Provincial

GRADE 2 READING DISTRICT

The results of the *Provincial Literacy Assessment at Grade 2*, in Reading, are shown for each of the School Districts by the percentage of students achieving at the appropriate or above levels. The number of students for each School District can be found in the brackets.

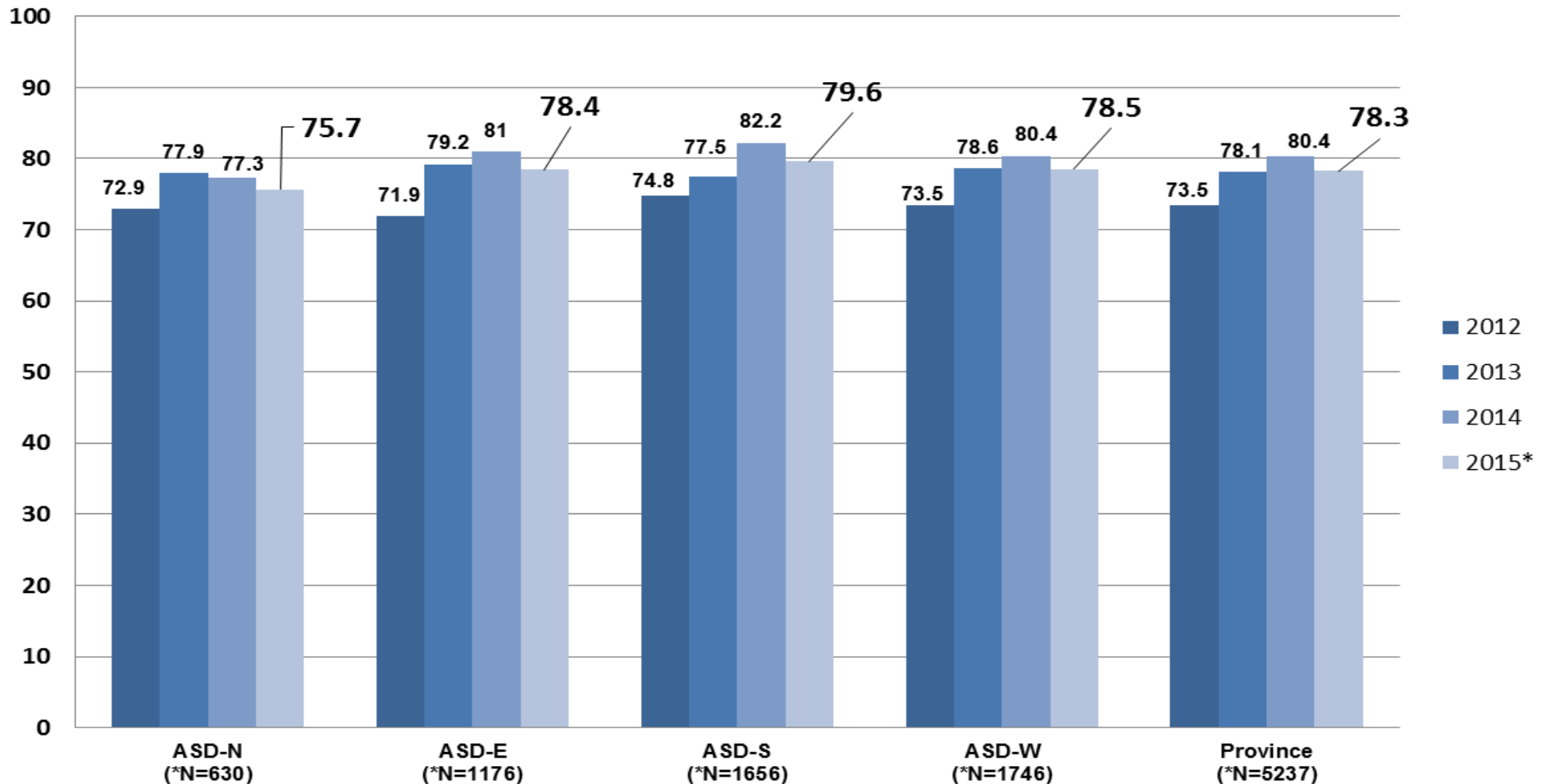
**Provincial Reading Assessment at Grade 2
Percentage of Students at Appropriate or Above by District**



ELPA (GRADE 9) DISTRICT

The results of the *English Language Proficiency Assessment at Grade 9 Reading* are shown for each of the School Districts by the percentage of students achieving at the appropriate or above levels. The number of students for each School District can be found in the brackets.

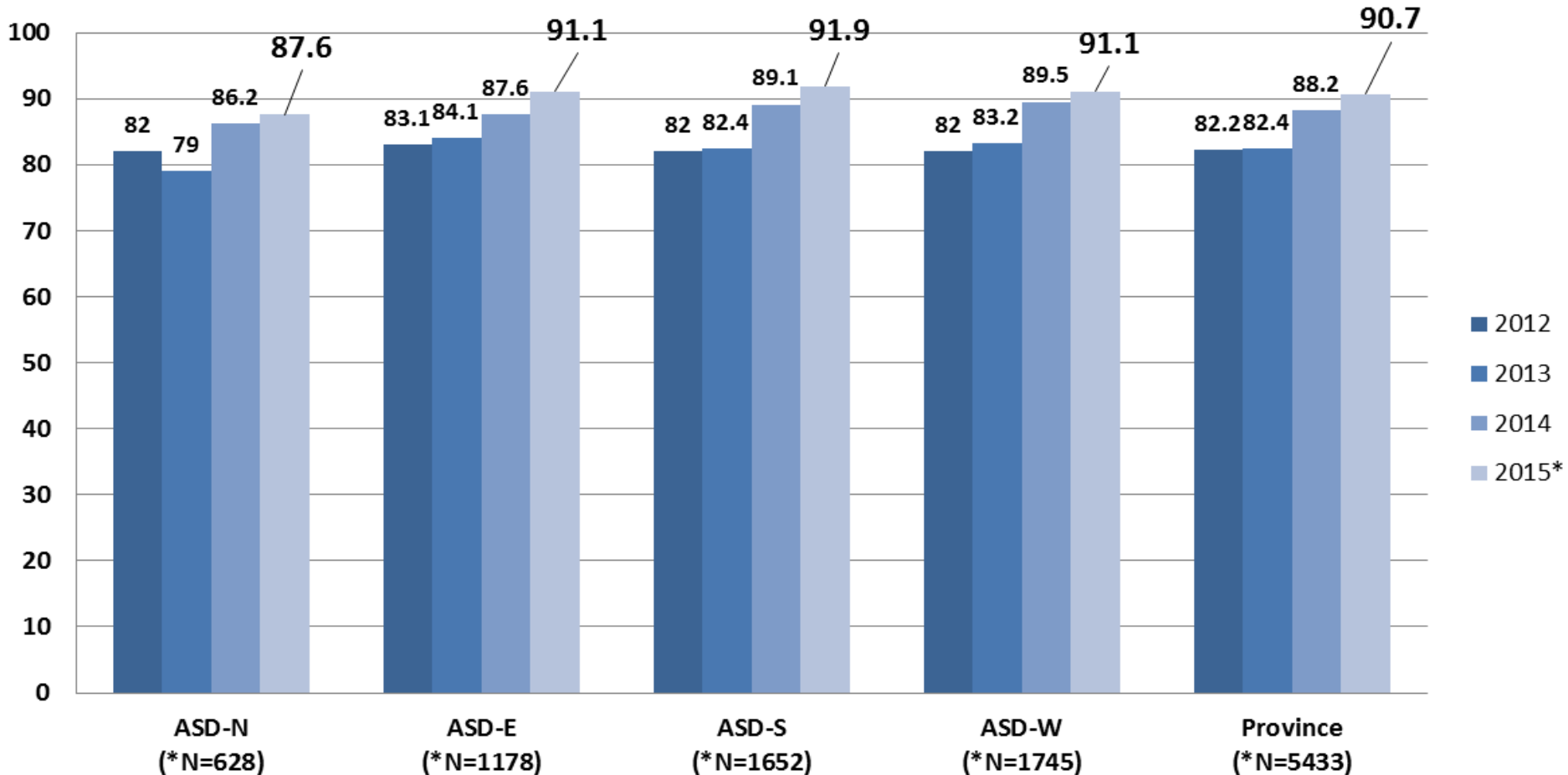
English Language Proficiency Assessment: Reading
Percentage of Students at Appropriate or Above by District



ELPA G9 WRITING DISTRICT

The results of the *English Language Proficiency Assessment at Grade 9 Writing*, are shown for each of the School Districts by the percentage of students achieving at the appropriate or above levels. The number of students for each School District can be found in the brackets.

English Language Proficiency Assessment: Writing
Percentage of Students at Appropriate or Above by District

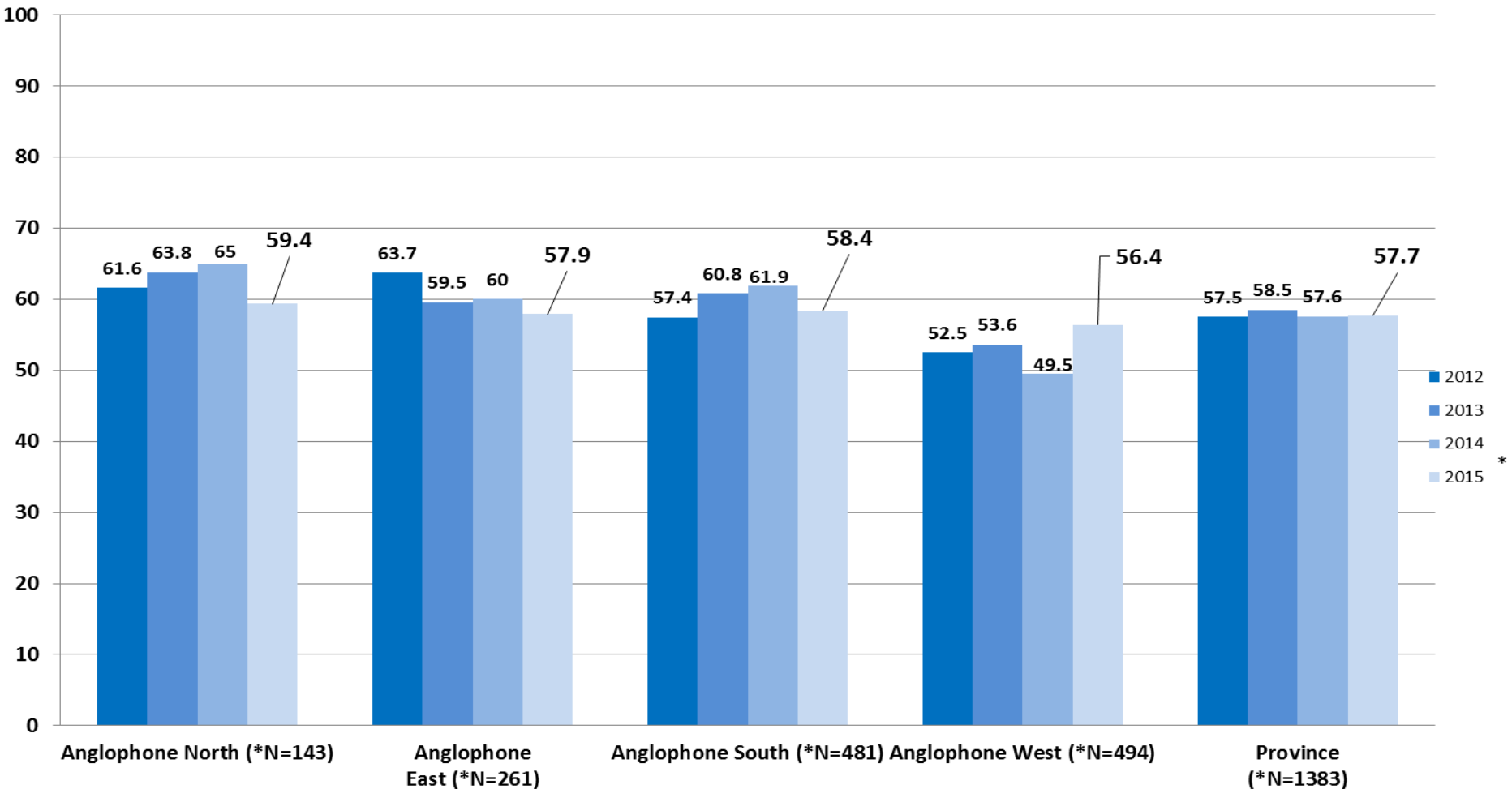


Mathematics G8

DISTRICT

The results of the *Mathematics Grade 8*, are shown for each of the School Districts by the percentage of students achieving at the appropriate or above levels. The number of students for each School District can be found in the brackets.

Provincial Mathematics Assessment at Grade 8
Percentage of Students at Appropriate or Above by District



French Immersion Second Language Oral Proficiency G12 EECD

TARGET:

- Early French Immersion Program is for 85% of Grade 12 students to attain an Advanced Oral Proficiency level.
- Late French Immersion Program is for 85% of Grade 12 students to attain an Intermediate Plus or above Oral Proficiency level.

POPULATION:

- Mandatory assessment for students enrolled in French Immersion students (as per Policy 309).

2014-2015 Provincial Assessment at Grade 12
FSL Oral Proficiency Interviews by Proficiency Level: Early Immersion

