



# NEW K-5 SCHOOL QUISPAMSIS

May, 2014

# 2012-2013 Budget Speech

- a new 350 student elementary school for Quispamsis was announced

# Planning Design Committee

- Members named in October 2012 including:
- Lakefield Elementary – Rosemarie Kingston
- Quispamsis Elementary – Deborah Irvine Anderson
- Fairvale Elementary – Bonnie Hierlihy
- District Education Council – Roger Nesbitt
- District Staff :
- Paul Smith, Senior Education Officer
- Craig Jones – Facilities
- Jeff Hanson – Director Finance & Administration
- Zoë Watson, Superintendent

# Fall 2012

- Department of Transportation and Infrastructure determined there is space to construct a two level 350 student K-5 school. The location was approved by the District Education Council (September 2012)
- Educational Specifications document developed – led by Josh Nowlan, Senior Project Manager, Department of Education & Early Childhood Development
- This document is unique to each school project and outlines the size and use of the spaces in the school

## Fall 2012 continued ....

- Meetings with the Town of Quispamsis to look at growth, trends in housing starts.
- Examination of enrolment trends and kindergarten registrations for 2012-13

# Enrolment

<b>Year</b>	<b>Fairvale Elementary</b>	<b>Quispamsis Elementary</b>	<b>Lakefield Elementary</b>
<b>2000</b>	527	450	437
<b>2002</b>	562	409	478
<b>2004</b>	581	381	509
<b>2006</b>	572	347	552
<b>2008</b>	555	418	541
<b>2010</b>	537	452	522
<b>2011</b>	558	469	533
<b>2012</b>	539	495	508
<b>2013</b>	565	501	514

# Modulars

- Quispamsis Elementary – 7
- Fairvale Elementary – 4
- Lakefield Elementary - 4

# Quispamsis Elementary – 6 Modulares *(one was added after this picture was taken)*





# Fairvale Elementary School – 4 Modulars



# Lakefield Elementary – Four Modulars



# December 2012

- Educational specifications signed off by committee and approved by District Education Council and forwarded to Minister
- Minister of Education Jody Carr & MLAs visited the site January 2013 and a sign was erected

January, 2013



# Features

- 4 kindergarten classrooms
- 14 classrooms
- 5 resource/special care areas
- Student project areas
- Music room
- Performing arts class
- Double gym/change rooms

## Features continued ...

- Guidance/visiting professionals
- Library/media centre
- Cafeteria/kitchen stage
- Recycle room
- Office/staff room
- Multi-sport playfield

# Spring 2013

- Adjacency drawings developed by the committee and Josh Nowlan
- Transportation staff began to examine boundaries

# Fall 2013

- Two meetings to review and give feedback on the architect's schematic drawings
- Initial meeting with Principals and Transportation to examine boundaries



March/April 2014

- Architect and Contractor named

# Next Steps

- Parent Open House (May 6) for Quispamsis Middle and individual meetings for the elementary schools in later May
- Boundaries finalized after parent meetings
- Naming of the new school – committee will be formed (DEC member, District Staff person, Dept. Staff person, a community rep named by the DEC)
- QMS Field ready for September 2014
- New Principal hired January 2015
- New school open September 2015

# New Quispamsis Elementary School

Quispamsis, New Brunswick



Province of New Brunswick

Department of Transportation & Infrastructure • Department of Education & Early Childhood Development

Design Development Submission

Prime Consultant /  
Architect

Civil Engineer

Landscape Architect

Structural Engineer

Mechanical Engineer

Electrical Engineer

Food Services

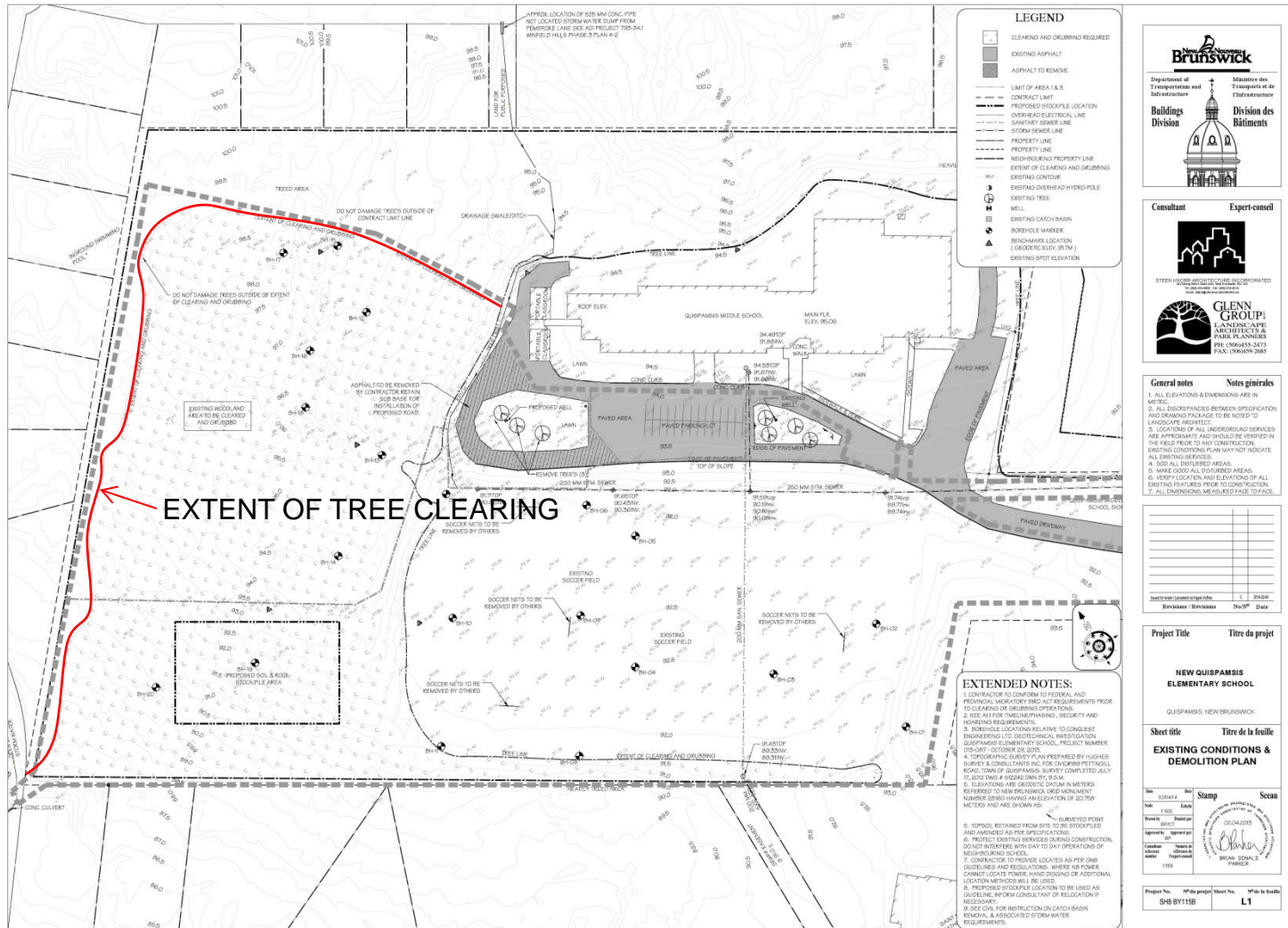
LEED Coordinator



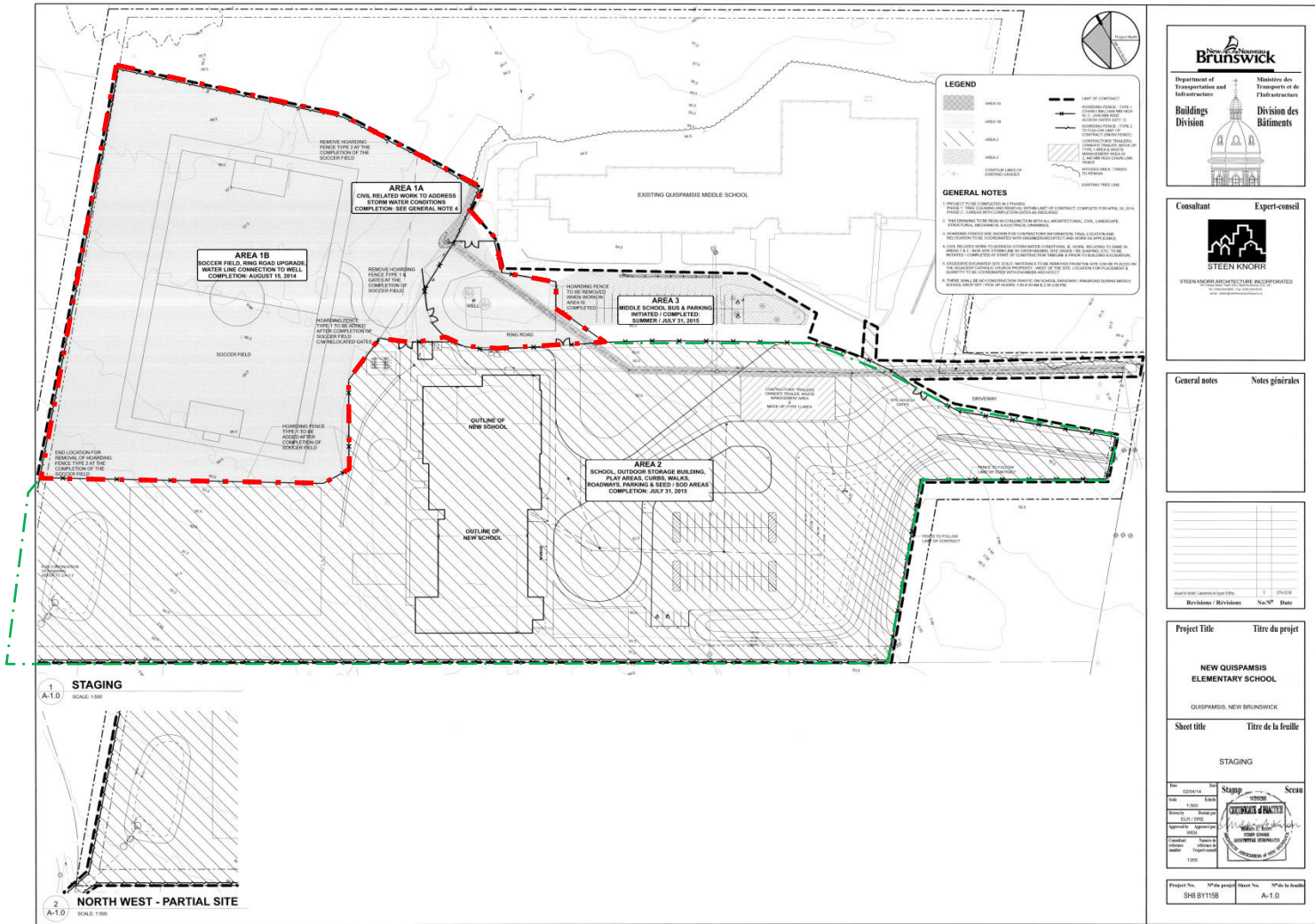
# Aerial photo – Quispamsis Middle School Property



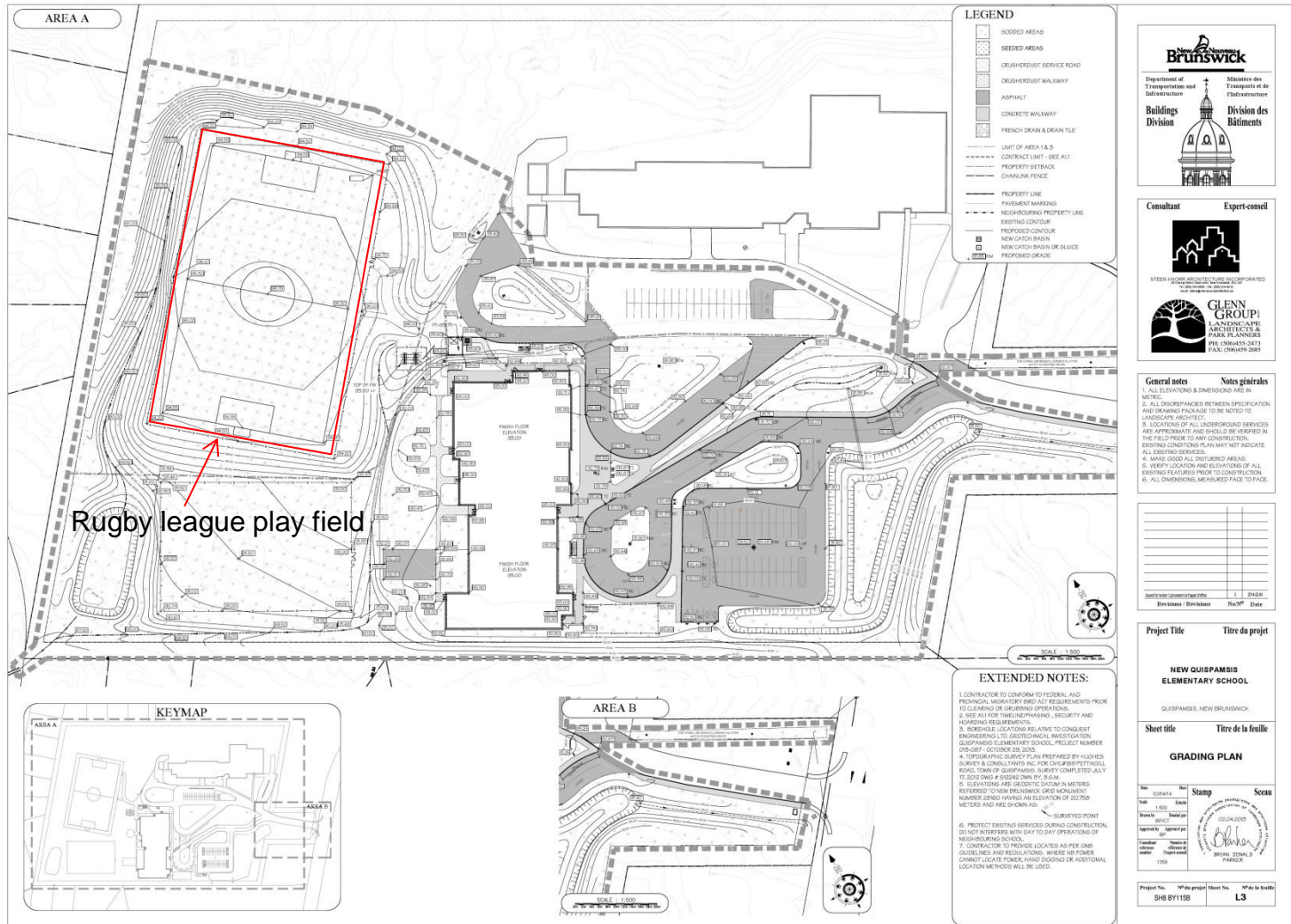
# Existing Conditions / Removal Plan – Quispamsis Middle School Property



# Construction Zones – Quispamsis Middle School Property



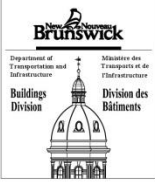
# Future Site Conditions – Quispamsis Middle School Property



Rugby league play field

**LEGEND**

- SEEDED AREAS
- SEEDED AREAS
- CRUSHED GRAVEL SERVICE ROAD
- CRUSHED GRAVEL WALKWAY
- ASPHALT
- CONCRETE WALKWAY
- FRENCH DRAIN & DRAIN TILE
- LIMIT OF AREA 1 & 2
- CONTRACT LIMIT - SEE ALL
- PROPERTY BOUNDARY
- CHAINLINK FENCE
- PROPERTY LINE
- PAVEMENT MARKING
- NEIGHBOURING PROPERTY LINE
- EXISTING CONTOUR
- PROPOSED CONTOUR
- NEW CATCH BASIN
- NEW CATCH BASIN DE BLUICE
- PROPOSED GRADE



**Consultant Expert-consult**

STEEN STRAIN ARCHITECTURE INC. (CORPORATED)  
 1000 UNIVERSITY AVENUE, SUITE 100  
 ST. JOHN'S, NL A1B 4X6

**GLENN GROUP**  
 LANDSCAPE ARCHITECTS &  
 PARK PLANNERS  
 P.O. BOX 5855-2873  
 ST. JOHN'S, NL A1B 5K8

- General notes**
1. ALL ELEVATIONS & DIMENSIONS ARE IN METERS.
  2. ALL DISCREPANCIES BETWEEN SPECIFICATION AND DRAWING PACKAGE TO BE NOTED TO LANDSCAPE ARCHITECT.
  3. LOCATIONS OF ALL SUBSURFACE SERVICES ARE APPROXIMATE AND SHOULD BE VERIFIED IN THE FIELD PRIOR TO ANY CONSTRUCTION.
  4. MAKE GOOD ALL DISTURBED AREAS.
  5. VERIFY LOCATION AND ELEVATION OF ALL EXISTING FEATURES PRIOR TO CONSTRUCTION.
  6. ALL DIMENSIONS MEASURED FACE TO FACE.


Project Title Titre du projet

**NEW QUISPAMBSIS ELEMENTARY SCHOOL**

Sheet title Titre de la feuille

**GRADING PLAN**

Stamp: 20240205  
 BRYAN DENNIS  
 P.L.L.C.

- EXTENDED NOTES:**
1. CONTRACTOR TO OBTAIN ALL FEDERAL AND PROVINCIAL, MUNICIPAL AND ACT REQUIREMENTS PRIOR TO CLEARING OR GRADING OPERATIONS.
  2. SEE ALL FOR TIMELINE, PHASING, SECURITY AND WORKING REQUIREMENTS.
  3. BOREHOLE LOCATIONS RELATIVE TO CONDUCT EXISTING/NEW UTILITY INVESTIGATION QUISPAMBSIS ELEMENTARY SCHOOL, PROJECT NUMBER 20240101 - 02/08/2024.
  4. TOPOGRAPHIC SURVEY PLAN PREPARED BY HUGHES BOWEN & COMPANY LIMITED FOR CONGRUP PETERBELL ROAD, TOWN OF QUISPAMBSIS, SURVEY COMPLETED JULY 10, 2023 (SEE A DESIGN DRAWING).
  5. ELEVATIONS ARE GEODETIC DATUM IN METERS REFERRED TO THE BRUNSWICK GREEN MONUMENT NUMBER 22803 HAVING AN ELEVATION OF 202.758 METERS AND ARE GIVEN AS \_\_\_\_\_ SURVEYED POINT.
  6. PROTECT EXISTING SERVICES DURING CONSTRUCTION, DO NOT INTERFERE WITH DAY TO DAY OPERATIONS OF NEIGHBOURING SCHOOLS.
  7. CONTRACTOR TO PROVIDE LOCATES AS PER ONE QUOTED AND REGULATIONS, WHERE NO POWER CANNOT LOCATE, POWER HAND DURING OF ADDITIONAL LOCATION METHODS WILL BE USED.

