

ASSESSMENT

Student achievement will be assessed using assignments, tests and final exams.

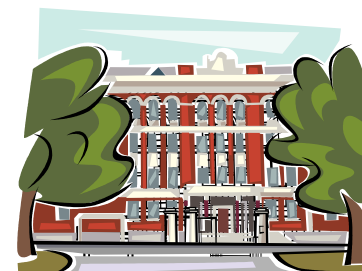
TEXTBOOKS

Textbooks are loaned to students for use during the Summer School. Students who lose or damage textbooks will be required to pay the replacement/repair cost before final marks are released.

Anglophone South School District

SUMMER SCHOOL 2013

Harbour View High



Anglophone South School District, in partnership with READ Saint John, will be offering a Summer School Program for students for students in Grades 8 to 12. The program will be held at Harbour View High School and will have three components as follows:

**Grades 8, 9 and 10
Mathematics and English,
July 2 – July 26, 2013**

**Grades 8-12 (EAL)
English as Another Language
July 2 – July 26, 2013**

**Grades 11 and 12,
July 2 – August 2, 2013**

Anglophone South School District

SUMMER SCHOOL PROGRAM COMPONENTS

- **Grades 8, 9 and 10 Mathematics and English,
July 2 – July 26, 2013**

Students may take one or two of the following courses:

English 8,9,10
Mathematics 8,9
Geometry, Measurement & Finance 10
Number, Relations & Functions 10

- **Grades 8 - 12 English as Another Language (EAL)
July 2 – July 26, 2013**

- **Grades 11 and 12,
July 2 – August 2, 2013**

Students in these grades may take one or two of the following courses for credit:

Biology 112, 113, 122
Chemistry 112, 122
Economics 120
English 112, 113, 122, 123
Environmental Science 122
French 112, 122
Geography 120
History 112, 113, 122
Law 120
Financial & Workplace Mathematics 110
Foundations of Mathematics 110
Pre-Calculus 110
Trig and 3-Space 122
Advanced Math 120
Physical Geography 110
Physics 112, 122
Other courses if there is sufficient interest.

ELIGIBILITY

To enroll in summer school courses, students require the permission of their school principal and a **minimum mark during the school year of 50% or letter grade equivalent.**

REGISTRATION

Summer School registration forms will be available in all middle schools and high schools in June. **The registration deadline is Monday, June 24, 2013. All students enrolling in summer school are to report to the Harbour View High School auditorium at 8:30 a.m. on Tuesday, July 2, 2013.**

TUITION FEES

The tuition fees are as follows:

Grades 8, 9 & 10 or EAL- \$200.00 for one or two courses.

Grades 11 & 12 - \$250.00 for one course or \$300.00 for two courses.

- Payment may be made by cash, cheque, or money order.
- **Cheques and money orders are to be made payable to “READ Saint John”**
- **CHEQUES MUST BE CERTIFIED.**

REFUNDS

A full refund of tuition fees will be issued by July 2, 2013 if:

- Summer School is cancelled due to lack of registrations.
- A student cannot be timetabled.
- The course/courses in which a student has registered cannot be offered due to lack of registrations.

DAILY SCHEDULE

The daily schedule is as follows:

Period 1: 8:30 a.m. to 10:20 a.m.
Break: 10:20 a.m. to 10:40 a.m.
Period 2: 10:40 a.m. to 12:30 p.m.

Students enrolled in one course attend Period 1 or Period 2, while students registered in two courses attend both periods.

WITHDRAWAL POLICY

The following shall be considered sufficient reason for requiring a student to withdraw from Summer School without refund of tuition fees:

- Aggressive, disruptive, disrespectful, or other unruly behaviour.
- Not working to his/her maximum.
- Absenteeism (for emergency, sickness, or approved absence only) greater than a total of two summer school days.
- Tardiness.
- Failure to do assignments.
- Truancy.