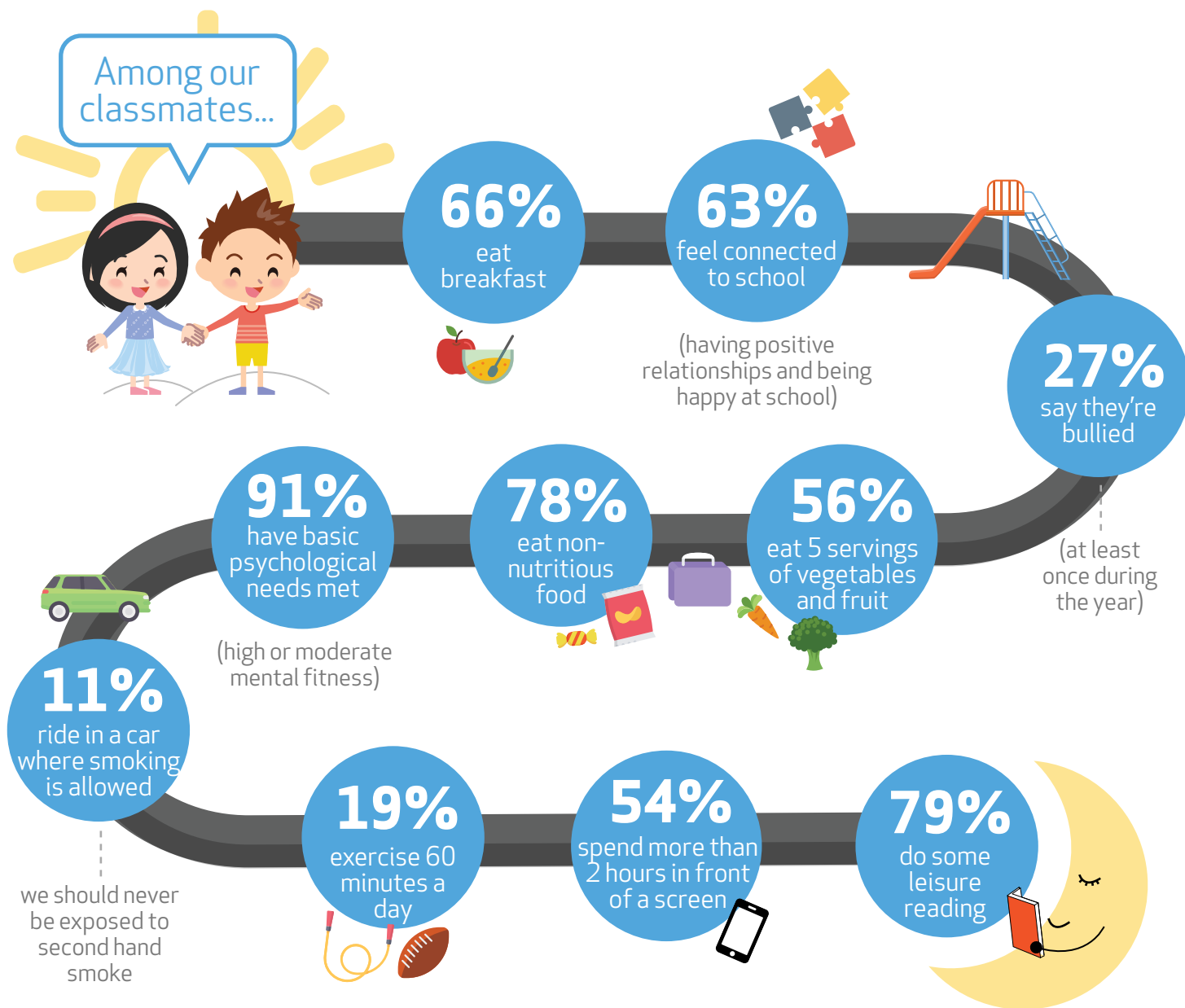


grades 4-5  
**A day** in the **lives** of **children** at

# Harvey Elementary School



These results are based on the 2016-2017 edition of the **New Brunswick Elementary Student Wellness Survey**, which included responses from **64 students** (grades 4-5) from Harvey Elementary School.

The survey is an initiative of the Department of Social Development (Wellness Branch) in cooperation with the Department of Education and Early Childhood Development and the New Brunswick Health Council.

Healthy students are better learners!  
Let's work together - parents and teachers - for the wellness of our children.