



ENTERING GRADE 10

COURSE SELECTION

2022-23

NACKAWIC HIGH
SCHOOL

English 10 –
Informational Text

English 10 –
Literary Text

Geometry
Measurement and
Finance 10 or

FI Geometry
Measurement and
Finance 10

Social Studies 10
or FI Social
Studies 10

Science 10 or FI
Science 10

French 10 or FILA
10 (early or late
immersion)

(FI) or Core
Personal
Development &
Career Planning

GRADE 10 COMPULSORY COURSES

ELECTIVE CREDIT COURSES

YOU CHOOSE EITHER NUMBERS RELATIONS & FUNCTIONS 10 /FI NUMBERS
RELATIONS AND FUNCTIONS 10 OR AN ALTERNATE CREDIT.

- NUMBERS RELATIONS
AND FUNCTIONS 10

OR

- INTRO TO TECHNOLOGY 110



NUMBERS RELATIONS & FUNCTIONS 10

- NUMBERS, RELATIONS, FUNCTIONS 10
- THIS COURSE IS THE PREREQUISITE COURSE FOR THE FOUNDATIONS AND PRE-CALCULUS PATHWAYS AND SETS THE FOUNDATION FOR TOPICS IN RELATIONS AND FUNCTIONS. TOPICS INCLUDE LINEAR RELATIONS AND FUNCTIONS, POLYNOMIALS, RADICALS AND EXPONENTS. STUDENTS ENTERING THIS COURSE SHOULD HAVE A 70% OR HIGHER IN MATH 9.



TWO MATH CREDITS ARE NEEDED FOR GRADUATION REQUIREMENTS.

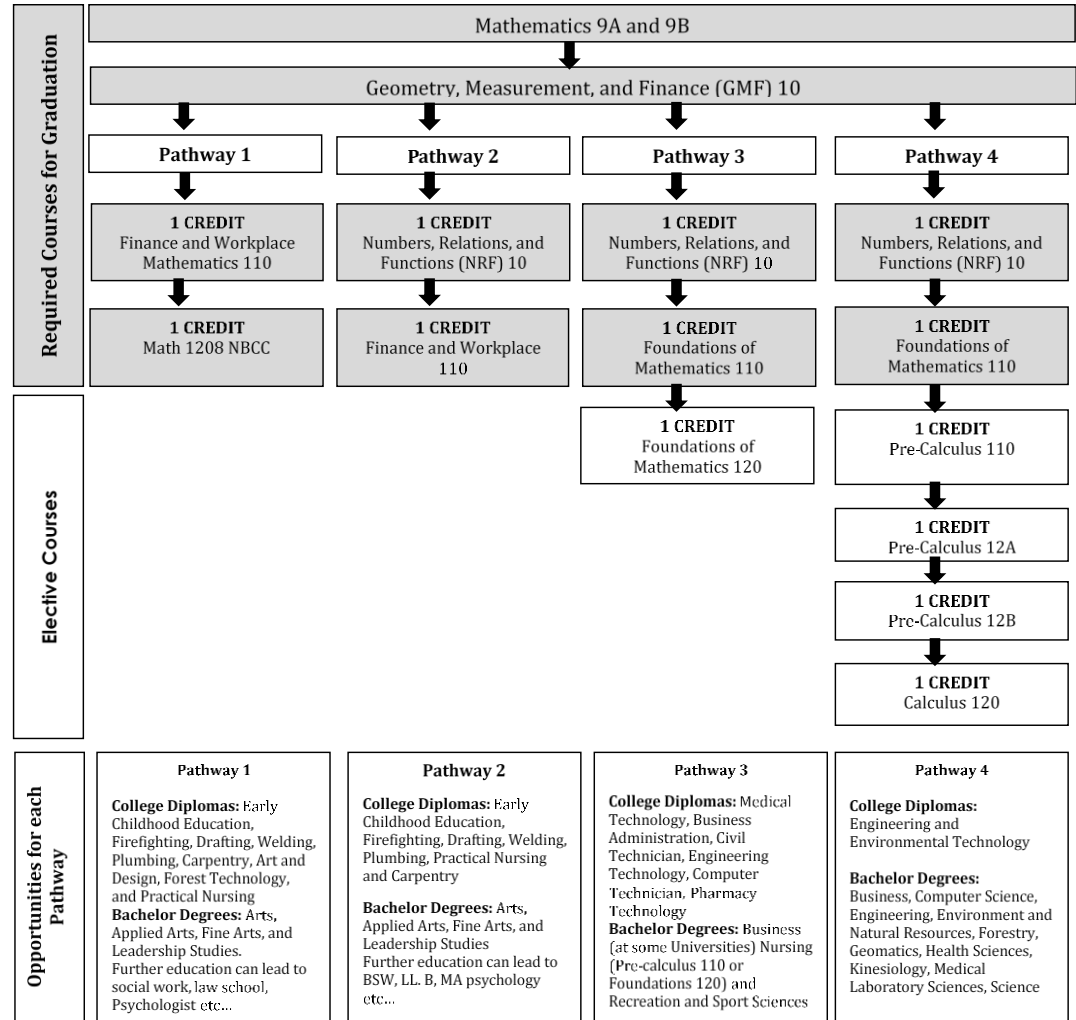
- NUMBERS RELATIONS AND FUNCTIONS (NRF) 10 COUNTS AS A CREDIT; IF STUDENTS DON'T SELECT NRF 10 THEY NEED TO SELECT ANOTHER CREDIT COURSE.
- THERE ARE A VARIETY OF WAYS TO OBTAIN THE TWO MATH CREDITS FOR GRADUATION:
 - NRF 10 + FINANCIAL WORKPLACE 110
 - NRF 10 + FOUNDATIONS 110
 - FINANCIAL WORKPLACE 110 + NBCC SKILLED TRADES WORK READY MATH 1208

MATH PATHWAYS AND POST SECONDARY PLANS

Graduation Pathways for Mathematics

Each pathway is designed to provide students with the mathematical competencies and critical thinking skills they will need after high school. Students should select courses in the pathway that best fits their interests and plans for after high school. Each pathway provides students with a different focus on math concepts and skills. Students may choose to take additional mathematics courses beyond the graduation requirements to better prepare them for what they want to do following high school.

Important Notes: Graduation requirements have recently changed for math. Students entering grade 12 in September are only required to complete 1 credit in math at the grade 11 level (Fin and Workplace 110 OR Foundations 110). However, students entering grade 11 in September need to complete 2 math credits. Please refer to the diagram below for the various options.



It is important to confirm entrance requirements for the specific program(s) in which you are interested.
Requirements may vary between institutions and programs of study.

POST SECONDARY MATH REQUIREMENTS

- **STUDENTS AND PARENTS SHOULD RESEARCH POST-SECONDARY REQUIREMENTS FOR PROGRAMS OF INTEREST. REQUIREMENTS VARY FROM SCHOOL TO SCHOOL.**
- FINANCIAL WORKPLACE 110-ENTRANCE INTO A BACHELOR OF ARTS, FINE ARTS, SOCIAL SCIENCES AND VARIOUS COLLEGE PROGRAMS THAT DON'T REQUIRE FURTHER MATH.
- NRF 10, FOUNDATIONS 110 & 120-BACHELOR OF NURSING, BBA AT SOME UNIVERSITIES, SUCH AS ACADIA, SMU (NOT UNB)
- NRF 10, FOUNDATIONS 110, PRE-CAL 110, 120A, 120B-BACHELOR OF SCIENCE AND ALL SCIENCE RELATED DEGREES, COMP. SCIENCE, ENGINEERING, SOME BBA PROGRAMS (UNB)
- NBCC SKILLED TRADES WORK READY MATH 1208 - THIS MATH, TAKEN IN GRADE 12 AT NHS, WILL PROVIDE CREDIT FOR BOTH HIGH SCHOOL AND NBCC FIRST YEAR MATH FOR MANY NBCC TRADES' PROGRAMS; -SEE COUNSELLOR FOR LIST OF PROGRAMS THIS APPLIES TO. NO NRF NEEDED FOR THIS. GMF 10 IS TAKEN THEN FINANCIAL 110 AND THEN NBCC MATH 1208.

**GRADE 10
ELECTIVES
YOU
MUST
CHOOSE
TWO
ELECTIVES**



Broad Based Technology 10



Intro to Applied Tech 110



Phys Ed. 10



Visual Art 10



Music 10

ESSENTIAL SKILLS ACHIEVEMENT PATHWAY (ESAP) PROGRAM

The Essential Skills Achievement Pathway (ESAP) Program is an opportunity for students to earn a high school diploma that prepares them for a post-secondary education, apprenticeship, or the world of work. The program consists of personalized learning opportunities that allow students to explore their skills, talents, abilities and interests while intentionally attaining the 9 federally identified Essential Skills (i.e., reading text, document use, writing, numeracy, oral communication, thinking skills, working with others, computer use and continuous learning.) Proficiency in these skills is demonstrated and evaluated through problem and project-based learning in the classroom, community and workplace. The ESAP program prepares students for the current skills-based economy as well as future work, learning and life. Students must a full course load for now but listen to the announcements for more information about this program. It starts during the second semester of grade 10.

COURSE SELECTION PROCESS



Talk to your parents/teachers to help guide your decisions



Make sure you think about your choices carefully. You will not have the opportunity to change your mind in the fall, unless it affects post secondary plans.



Pass in your completed Course selection form to your advisor by April 13, 2022