

Canterbury High School



To school

10 meters / 30 feet

Playground

Climbers along fence  
Grapes, Hardy Kiwi

Chain link fence

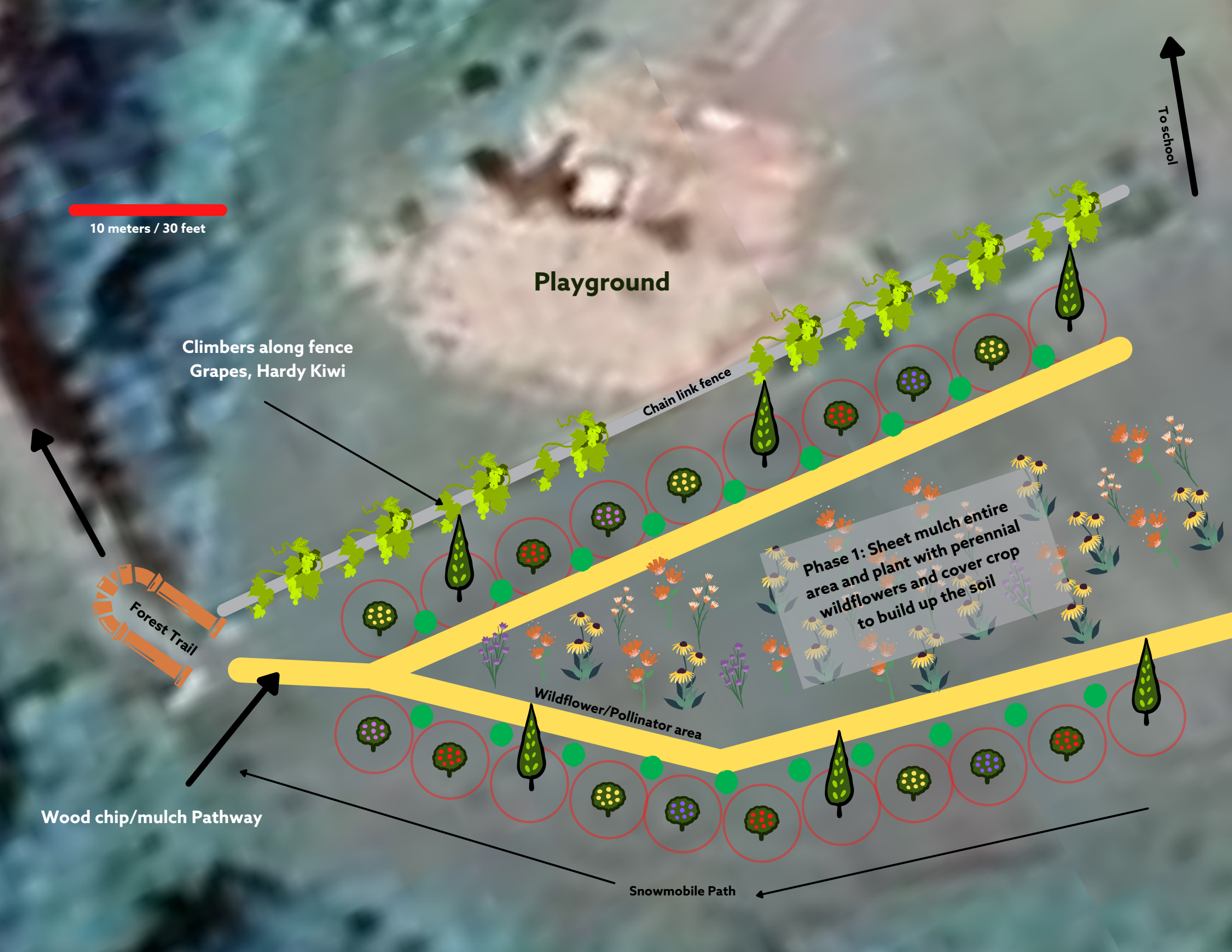
Phase 1: Sheet mulch entire  
area and plant with perennial  
wildflowers and cover crop  
to build up the soil

Forest Trail

Wildflower/Pollinator area

Wood chip/mulch Pathway

Snowmobile Path





# Canterbury School Community Food Forest

Phase 1 & 2 DRAFT - Design by A. Birchweaver

- 1 Pear trees
- 2 Nut Trees/Nitrogen Fixers (Black Locust, Butternut, Hickory)
- 3 Apple trees (IVarieties that produce in Late Sept, Oct)
- 4 Plums, Cherries, Chums, Mulberry
- 5 Climbers (Grapes, Hardy Kiwi, Japanese Honeysuckle)
- 6 Wildflowers/Perennials (Echinacia, lupines, Bergamot, Calaendula, Daffodils, Crocus, etc)
- 7 Fruiting Shrubs (Highbush Blueberries, Raspberries, Currants, Haskaps, Gooseberries, Seabuckthorn, Aronia berries)



10 meters / 30 feet

Snowmobile Path

Raspberries/  
Highbush Blueberries/  
Haskaps/  
Currants (Phase 2)

Outdoor Classroom  
(Phase 2)

Wildflower/Pollinator area

Forest Trail

Long jump Pit

To school