

Information Bulletin for Parents and Guardians Grade 6 Provincial Assessment

The Grade 6 Provincial Assessment is part of New Brunswick's Provincial Assessment Program. It measures students' performance in three Grade 6 subjects. The assessment will be completed from May 28 to June 8, 2018. Information from this assessment is used to track progress in educational programs over time.

What is included in the Grade 6 Provincial Assessment?

Students are assessed in:

1. Reading;
 - English (all students)
 - French (Post Intensive French and French Immersion)
2. Math;
3. Science.

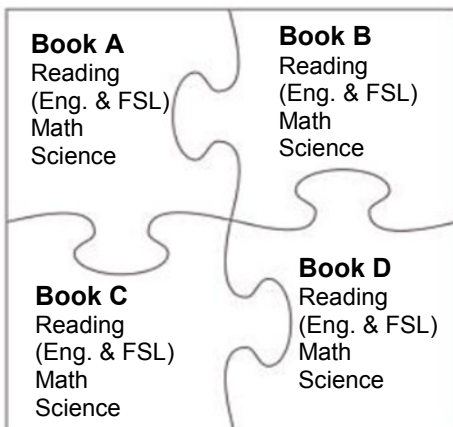


The Math and Science sections of the booklets are available in English and French. Each booklet also includes a short student survey.

Students are given 60-120 minutes to complete the assessment in each subject.

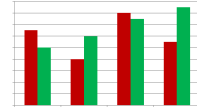
The assessment questions for each subject are divided among four different booklets. The four booklets form the full assessment. Each student randomly receives only one of the four booklets and therefore completes only 25% of the total available questions.

Grade 6 Assessment



What results are available from the Grade 6 Provincial Assessment?

Results are reported by school, by district and by the province. Results are mainly used to inform decisions at the district and provincial levels.



Individual student results are not available because each student only completes one quarter of the full assessment. School and district results will be reported in the Fall of 2018.

Do all Grade 6 students take part in the assessment?

This assessment is intended to be as inclusive as possible. All Grade 6 students participate except those whose Personalized Learning Plan indicates they should be exempted. A variety of accommodations for this assessment are available to all students.



How is the assessment completed and marked?

Students record their answers to the multiple choice questions in their booklets and these are marked electronically. There are also questions that require written responses from students and these are marked by New Brunswick educators.

