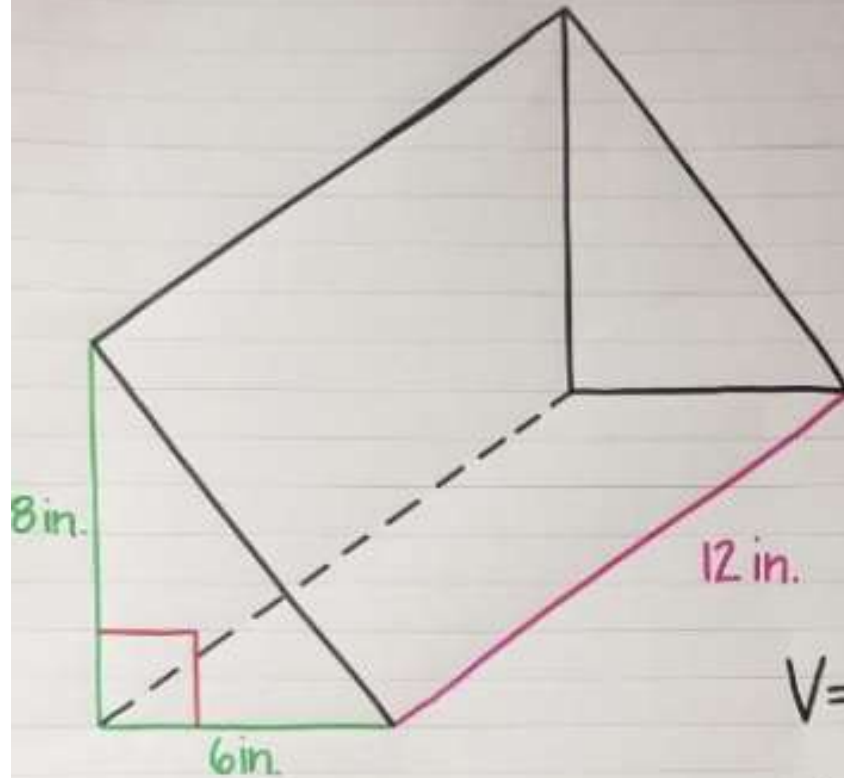


VOLUME OF TRIANGULAR PRISMS



formula
 $V = Bh$



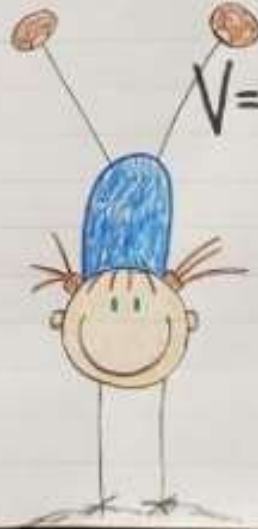
$$V = Bh$$

$$V = \left(\frac{1}{2} \cdot 8 \cdot 6\right)h$$

$V =$ volume

$B =$ base

$h =$ height



$$V = \left(\frac{1}{2} \cdot 8 \cdot 6\right)12$$

$$4 \cdot 6$$

$$24 \cdot 12$$

$$288 \text{ in}^3$$