

ANGLOPHONE WEST SCHOOL DISTRICT



Sustainability Study

Bristol Elementary School



Public Meeting #1 Agenda

- Introductions
- Review of Provincial Policy 409 Multi-Year School Infrastructure Planning
- Presentation of Information – Bristol Elementary School
- Question and Answer
- What's Next?
 - o Online Resources and Feedback
 - o Next Meetings



Provincial Policy 409

Multi-year School Infrastructure Planning

- Outlines a number of responsibilities to do with facilities in our system
- Sections 6.4, 6.5, 6.6 and 6.7 are relevant for sustainability studies
- Three Public Meetings
 - Meeting 1 – Presentation of information from District regarding school
 - Meeting 2 - Presentation from stakeholders regarding their thoughts on the sustainability of the school and relevant factors
 - Meeting 3 – Final review of information by District Education Council (DEC) and subsequent motion on next steps



Provincial Policy 409

Multi-year School Infrastructure Planning

- Three Possible Outcomes
 - o Maintain the status-quo at Bristol Elementary School
 - o Provide for repairs to Bristol Elementary School
 - o Close Bristol Elementary School and include students in a new K – 8 school with location and catchment areas to be determined during the Major Capital Process.
- Public meetings provide the DEC with information to make an informed decision.



*Excited. Involved.
Prepared.*

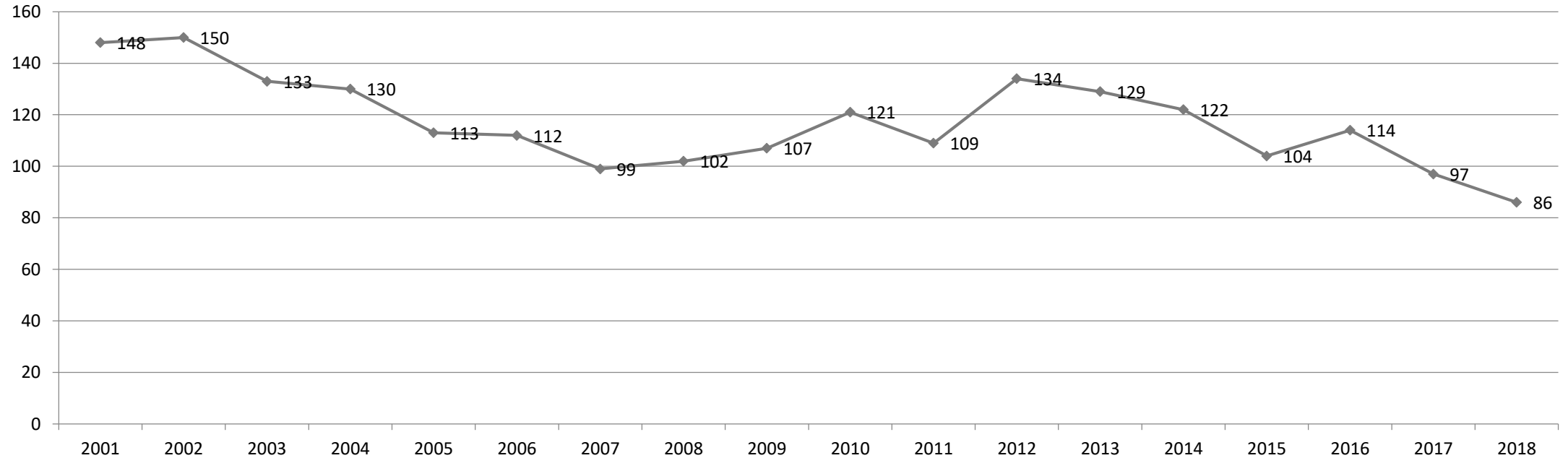
Information to be Presented

- Enrolment
- Quality of Education Programs & Services
- Provincial Assessment Results
- Transportation
- Finances
- Impact on Other Schools
- Building Challenges/Health & Safety
- Impact on Local Community
- Economic Development
- Vision for New School



Enrolment

School Enrolment Trends 2001 to Present



*Excited. Involved.
Prepared.*

Enrolment By Grade Level: Bristol Elementary School

	2012	2013	2014	2015	2016	2017	2018	2019	2020	2021	2022	2023	2024
K	24	16	19	11	20	12	14	14	11	10	15	13	14
1	25	24	15	19	17	15	13	14	14	10	9	15	12
2	20	28	28	12	22	14	16	14	16	15	11	10	16
3	25	15	18	25	10	18	13	17	15	16	15	11	10
4	19	26	16	18	27	10	18	13	19	15	16	15	11
5	21	20	26	19	18	28	12	18	13	19	15	16	16
Total	134	129	122	104	114	97	86	90	88	85	81	80	79



*Excited. Involved.
Prepared.*

Quality of Education Programs & Services

Educational Staff – Bristol Elementary School

Full Time Equivalent (FTE)	2018-2019		2019-2020	
	Provincial Staffing Formula 2018-2019	Actual 2018-2019	Provincial Staffing Formula 2019-2020	Actual 2019-2020
Classroom Teachers	5.50 FTE	5.50 FTE	6.60 FTE	6.60 FTE
Administration	0.34 FTE	0.40 FTE	0.36 FTE	0.40 FTE
Guidance	0.17 FTE	0.20 FTE	0.17 FTE	0.20 FTE
Resource	0.47 FTE	0.50 FTE	0.50 FTE	0.50 FTE
Additional FTE	0.00 FTE	0.40 FTE	0.00 FTE	0.00 FTE
Total	6.48 FTE	7.00 FTE	7.63 FTE	7.70 FTE



Maximum Class Sizes

Grade Level	Maximum Number of Students
K-2	21
3	26
K-3 Combined Classes	16
Grades 4-6	28
Grades 3-5 Combined Classes	23
Grades 7-12	29
Grades 5-12 Combined Classes	24



Quality of Education Programs & Services

Student Teacher Ratio

	Provincial Staffing Formula		Actual	
Year	Total Number Student: Ratio	Student: Teacher	Total Number Student: Ratio	Student: Teacher
2018-2019	86:6.48	13.27:1	86:7.00	12.28:1

	Provincial Staffing Formula		Actual	
Year	Total Number Student: Ratio	Student: Teacher	Total Number Student: Ratio	Student: Teacher
2019-2020	90:7.63	11.79:1	90:7.70	11.68:1



Support Staff Information

Full Time Equivalent (FTE) 2018-2019	Bristol Elementary School
Educational Assistants	30 hours per week (1.0 FTE)
Administrative Assistant II	36.25 hours per week (1.0 FTE)
School Library Worker I	6 hours per week (.17 FTE)
Custodian I	34 hours per week (.85 FTE)



Support Staff Information

Full Time Equivalent (FTE) 2019-2020	Bristol Elementary School
Educational Assistants	30 hours per week (1.0 FTE)
Administrative Assistant II	36.25 hours per week (1.0 FTE)
School Library Worker I	6 hours per week (.17 FTE)
Custodian I	34 hours per week (.85 FTE)



Core Curriculum and Supports

	Early French Immersion	Late French Immersion	Gymnasium	Music/Fine Arts/Specialists	EST-Resource	EST-Guidance	EST-Literacy	EST-Math	EST-French Immersion	EST-Science	Science Lab	Computer Lab
Bristol Elementary School	No	No	Yes, not regular size, formal name is multi-purpose room	No	Yes	Yes	12 weeks by District EST-L 18-19 Projected 12 weeks by District EST-L 19-20	3 weeks by District EST-N 18-19 Projected 3-6 weeks by District EST-N 19-20 3 for certain	No	2 weeks by District EST-S 18-19 Projected support for Environmental Showcase by District EST-S 19-20	No	No



Quality of Education Programs & Services

- Students from Bristol Elementary School enter the English Prime program at Bristol Elementary School beginning in Grade K.
- Students in the English Prime program at Grade 1 attend Bristol Elementary School and stay at Bristol Elementary School until the end of Grade 5.
- Students in French Immersion would attend Florenceville Elementary School beginning in Grade 1 and stay at Florenceville Elementary School until the end of Grade 5.
- Grade 5 students from Bristol Elementary School enter Florenceville Middle School for English Prime or late French Immersion programs beginning in Grade 6.



*Excited. Involved.
Prepared.*

Special Events that Encourage Community School Partnerships

- Go Wild and Nutrients for Life grants: Dooryard Greenhouse, Juniper Organics Plant and Co-operative Farm Store
- Donations from Sticks & Stones
- Crafty Corner Child Care
- Egg Marketing Board via Community Schools
- Hot Lunch program
- Remembrance Day program – local legion
- Christmas Concert
- Terry Fox event
- Art Show/Art Gallery (student art displayed)
- Elf Tutors
- Reciprocal Agreement with the town of Florenceville-Bristol for us of NCCC – skating and Jump for Heart
- Art Smart Grants
- Local Artist Cortney Rector
- Hot lunch and breakfast programs
- Community volunteers
- Summer Reading Program
- Hackmatack Reading Program Grades 3-5 – Andrew and Laura McCain Library
- Library Book Booster proposal – granted \$7000 from the CNCF *See [Appendix A](#) for more details.*

See [Appendix B](#) for “Sarah’s Input About BRES”.

For a sample of community activities and school news, please view the school’s website:

<http://web1.nbed.nb.ca/sites/ASD-W/bres/Pages/default.aspx>



*Excited. Involved.
Prepared.*

Student Voice

- Grade 5 students do morning announcements every Friday.
- Students are involved in the early planning stages and throughout our projects, such as the butterfly garden and the raised vegetable gardens.
- Students are involved in school programs (ex. master of ceremonies at the Christmas concert).
- Afterschool Art Club in partnership with the Andrew and Laura McCain Art Gallery
- Kiva – retired principal, James Wright, speaks to students and assists them in making decisions to support families in need in other countries.



*Excited. Involved.
Prepared.*

Provincial Assessment Results

Grade 2 Reading & Grade 4 Reading, Mathematics & Science
Bristol Elementary School

Year			Bristol Elementary School	District	Province
2011-2012	Grade 2	Reading	94.1%	78.0 %	79.1 %
2012-2013			100.0%	80.3 %	79.5 %
2013-2014			92.9%	76.8 %	77.5 %
2014-2015			79.3%	77.4%	76.9 %
2015-2016			78.6%	75.2 %	73.8 %
2016-2017			77.3%	75.9%	75.7%
2017-2018			73.3%	72.2%	71.2%
2018-2019			Grade 2 Assessment Discontinued by the Province		
2018-2019	Grade 4	English Reading	89.5%	65.7%	67.2%
		Mathematics	68.4%	62.4%	62.3%
		Science	73.7%	60.3%	61.0%



School Benefits

- Staff have a strong knowledge of all students' strengths and needs.
- Strong core leadership team that works together on all initiatives
- Positive relationships with local businesses, community members and parents/guardians
- Various clubs and activities are available to the student body. All teaching staff are involved. A schedule is created so that activities are not overlapping and students can participate in as many of the activities that they are interested in.
- Staff is very aware of the needs of the students and families.
- Backpack program supports families in need that is sponsored by the True North Baptist Church.
- Students look after the recycling bins on a weekly basis and they place them in the large blue recycling bin provided by the town of Florenceville-Bristol, NB.
- Use the Shiktehawk Trail for physical activities.
- Use the splash pad in early spring.
- Shogomoc Train invites students and staff for free tours and students are treated to an ice cream at a reduced rate.



School Challenges

- With a small staff it is challenging to schedule and meet the instructional time guidelines for K-5.
- Supervision minutes per week are usually higher for staff in a small rural school.
- There is limited space to accommodate meeting locations for outside agencies such as ISD, SLP, Elf tutors, etc.
- The building is limited with storage for resources due to Fire Marshal regulations.
- It is not a wheelchair accessible building.
- There is no defibrillator in the building.



*Excited. Involved.
Prepared.*

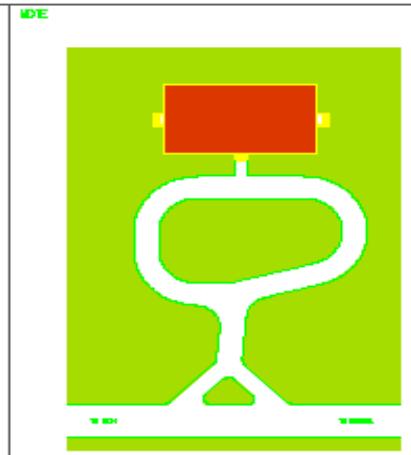
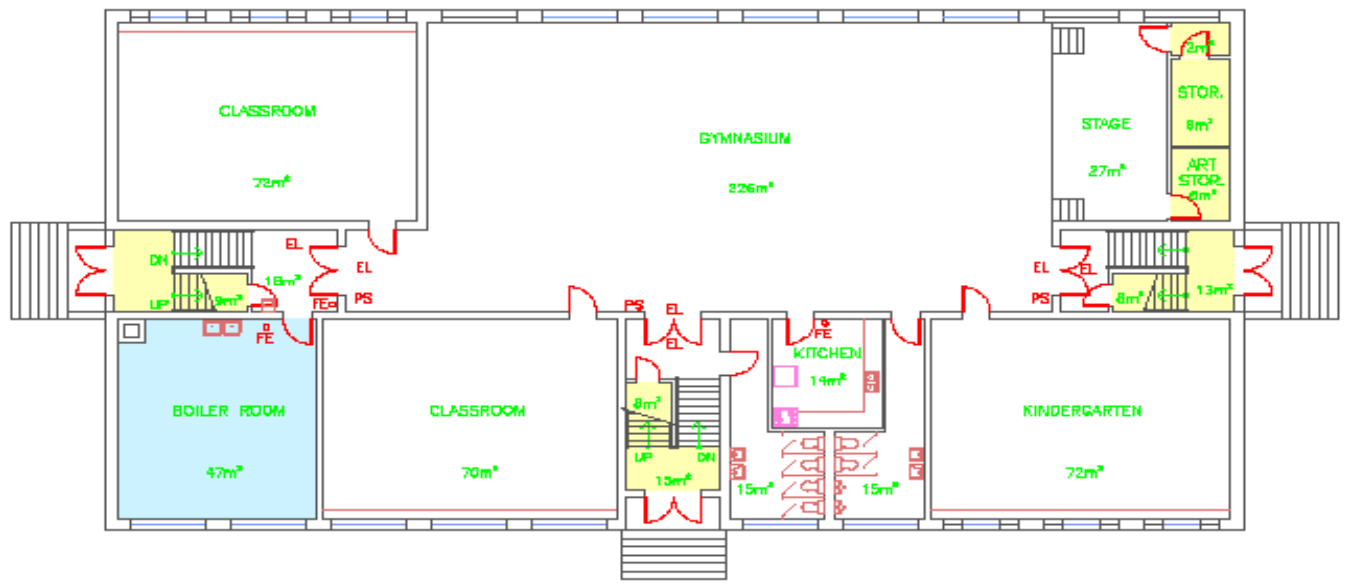
Building Summary

- The school is a two story, 1427 square meter, wood framed structure, built in 1966.
- There are 8 classrooms, a library, and a gym, but no cafeteria.



*Excited. Involved.
Prepared.*

- STORAGE
- MECHANICAL / ELECTRICAL
- LABORATORIES
- WATER / SPRINKLER



NO.	REVISIONS / REVISIONS	DATE	PAR / BY

Department of Education
Ministère de l'Éducation
New Brunswick

TITLE / TITRE
Bristol Elementary
9208 Main Street
Bristol, NB
- School District 14 -

ECHÉLLE / SCALE 1/16" = 1'-0"	DATE August 10/11
DESSIN D.A.D. / C.A.R. FILE Bristol elementary.dwg	
DESSINÉ PAR / DRAWN BY CS REEVE	NO DU DESSIN / DRAWING NO. A1
APPROUVÉ PAR / APPROVED BY CS REEVE	

Functional Capacity Data (2018-2019)

Functional Capacity Data	Student Enrollment	Number of Classrooms	Classrooms In Use	School Capacity	Capacity Rating
Based on 24 students per class	86	8	7	192	44.8%



*Excited. Involved.
Prepared.*

Building Challenges/Health & Safety

- There is no sprinkler system.
- There is no ventilation system.
- There is asbestos insulation found on pipe elbows and fittings which is being managed safely by trained staff.
- The school is not accessible by wheelchair due to split level entrances.
- The gym is undersized by 54 square meters compared to EECD planning guidelines for a small elementary school.
- The office area is located away from the main entrance.



Capital Investments

School Year	Scope of Work	Cost
2010-2011	Masonry - Brick Repointing	\$ 4,300.00
2011-2012	Radon	\$ 30,649.00
2018-2019	Roof Replacement	\$ 70,000.00
Totals		\$ 104,949.00



*Excited. Involved.
Prepared.*

Physical Plant Status

School Physical Plant Review / Report by School

School: Bristol Elementary School (ASD-W)		Grades: Kindergarten, 1-5		Year Built: 1966	
ASD-W	School No: 3004	City/Village: Florenceville-Bristol	Enrolment:86	Total Area (m2): 1427	
Mechanical and Electrical Systems			Description	Priority	Est. Cost
Heating and Ventilation		Ventilation System	Ventilation System. Note: Estimated costs updated Sept'13.	2	\$351,000.00
				Sub Total (Category)	\$351,000.00
Building Exterior and Site			Description	Priority	Est. Cost
Site		Site Improvement	Paving - upper side - staff parking lot is gravel.	3	\$40,000.00
				Sub Total (Category)	\$40,000.00
Building Interior and Additions			Description	Priority	Est. Cost
Interior Alterations and Renovations		Washrooms	Upgrade washrooms	2	\$50,000.00
Interior Finishes		Floors	Floor tiling	2	\$23,757.00
Interior Finishes		Interior Walls and Partitions	Painting	3	\$10,000.00
Interior Accessibility		Lift	Elevator	2	\$275,000.00
				Sub Total (Category)	\$358,757.00
Fire Codes			Description	Priority	Est. Cost
Fire Prevention		Sprinkler System	installation of sprinkler system with reservoir.	1	\$270,000.00
				Sub Total (Category)	\$270,000.00
				SCHOOL TOTAL	\$1,019,757.00



Facilities Operational Costs

Actual Costs			
	Fiscal Year	Fiscal Year	Fiscal Year
	2016/17	2017/18	2018/19
Facilities Costs			
Electricity	\$8,280	\$7,653	\$7,238
Water/Sewage	3,861	3,861	3,861
Garbage Removal	2,461	2,739	2,461
Snow Plowing	3,500	3,917	4,000
Heating Fuel	10,179	11,299	13,409
Cleaning Supplies/Services	2,999	3,286	3,792
Minor Repairs/Renovations	6,179	16,531	11,314
Total	\$37,459	\$49,286	\$46,075



*Excited. Involved.
Prepared.*

Assigned Budgets

	Actual Costs
Cost Centers	Fiscal Year
	2018-2019
Assigned Budgets	
Regular Instruction	\$14,243
Administrative Support	3,293
Teachers Working Conditions	1,955
Nutrition	899
Bilingual Learning Environment	400
Wellness Grant	1,579
Co/Extra Trips	693
PSSC	303
Total	\$23,365



*Excited. Involved.
Prepared.*

Bristol Elementary School Salaries

	Actual Costs	Projected Costs
Cost Centers	Fiscal Year 2018-2019	Fiscal Year 2019-2020
Salaries		
Administration	\$14,077	\$13,775
Teacher	618,004	606,241
Administrative Assistant	53,095	41,750
Library Assistant	4,668	4,716
Custodians	33,492	33,227
Educational Assistant	31,227	31,308
Total	\$754,563	\$731,017



*Excited. Involved.
Prepared.*

Total Costs

	Actual Costs
Cost Centers	Fiscal Year
	2018-2019
TOTAL COSTS	\$824,003



*Excited. Involved.
Prepared.*

Transportation Study

Bristol Elementary School

- Students in Grades 6-12 who reside in the Bristol Elementary School catchment area are bused to Florenceville Middle School and Carleton North High School. Bristol Elementary School does not have the French Immersion programming available. Students who wish to enroll in French Immersion attend Florenceville Elementary School.
- The morning school bus system has 5 buses transporting students within the Bristol Elementary School catchment area into the Bristol Elementary School.
- The afternoon school bus system has 5 buses transporting students within the Bristol Elementary School catchment area from the Bristol Elementary School.
- There would not be any anticipated impact with regards to the number of school buses or drivers if Bristol Elementary School should close.



Transportation Study

Bristol Elementary School - Busing

School	Longest Ride In	Longest Ride Out	Earliest Pick-up	Latest Drop Off	Average Ride Time
Bristol Elementary School	78 MIN	82 MIN	6:50 AM	4:25 PM	32 minutes



*Excited. Involved.
Prepared.*

Transportation Study

Bristol Elementary School - Busing

	Distance to Bristol Elementary School
Average Distance	11.4 km
Maximum Distance	37.8 km
Minimum Distance	0.3 km



*Excited. Involved.
Prepared.*

Impact on the Local Community and Economic Development

- Bristol Elementary School is 1 of 2 Elementary schools in the community. There is strong parent and community support for Bristol Elementary School.
- The impact on economic development and the local community related to the movement of Bristol Elementary School students to a new school is unknown by school officials at this time. We welcome community stakeholders to contribute to the discussion under this topic during public meeting #2.



*Excited. Involved.
Prepared.*

Possible Considerations Including Impact on Other Schools

- Maintain the status-quo at Bristol Elementary School
- Provide for repairs to Bristol Elementary School
- Close Bristol Elementary School and include students in a new K – 8 school with location and catchment areas to be determined during the Major Capital Process.



Our Vision for New School

A typical K-8 school for 650 students would look something like this:

- **32 general instruction classrooms**
- **4 Kindergarten classrooms**
- **1 early childhood development room**
- **(2) multi-function classrooms**
- **MSTE spaces**
- **science room**
- **resource/special care classrooms**
- **student/project work areas**
- **music rooms**
- **art room**
- **performing arts/theatre classroom**



*Excited. Involved.
Prepared.*

Our Vision for New School

- (2) 591 m² gymnasiums with change rooms and ancillary spaces
- guidance/visiting professionals' offices
- student government room
- library/media centre
- cafeteria/kitchen/stage
- recycling room
- administration space
- personnel centre with staff lounge
- play areas and playfield



*Excited. Involved.
Prepared.*

Questions and Answers

- Our presenters are ready to take questions from the floor.



*Excited. Involved.
Prepared.*

What Happens Next

- Public Meeting #2 – January 25, 2020 at 1:00p.m. at this school.
- Public Meeting #3 – March 19, 2020 at 6:30 p.m. at Carleton North High School
- DEC makes a recommendation on school's future
- Government considers the recommendation and makes a decision.
- Visit our website for further details and information on sustainability studies at www.asd-w.nbed.nb.ca



*Excited. Involved.
Prepared.*