

# Education

# Positive Effects of reduced student-to-teacher ratio:

- Most apparent during early years of education.
- Help to close the “achievement gap” between affluent and lower-income students.
- Greater participation in class, a better closeness with others.
- Shown to have lasting benefits throughout a child’s life.



# Scavenger Hunt

**From a 2010 UNESCO study as quoted on the NB  
Dept. of Education and Early Childhood  
Development website:**

- “ The system must redefine what learning is and reflect that it is not simply classroom based.”



**Artist in Residency**

## **Geocaching**



# From the NB Dept. of Education and Early Childhood Development's website:

- "The school is often the hub of the community and is known to parents and caregivers. The early childhood development centres will be neighbourhood hubs where children and parents can access existing programs and services under one roof. These sites will provide a venue where families can interact with other parents and forge ties with the education, health, and non-profit sectors in the local community. Having these services within local schools provides opportunities for better integration and transition into schools."

# Care 'N' Share



# From the NB Dept. of Education's Early Childhood Development Agenda:

- "We know that the skills and abilities of our young are linked to their personal success and to the success of our society. Therefore, we want to ensure that our children are safe, healthy, and are given the opportunity to learn and develop their abilities, in loving families, supported by caring communities."



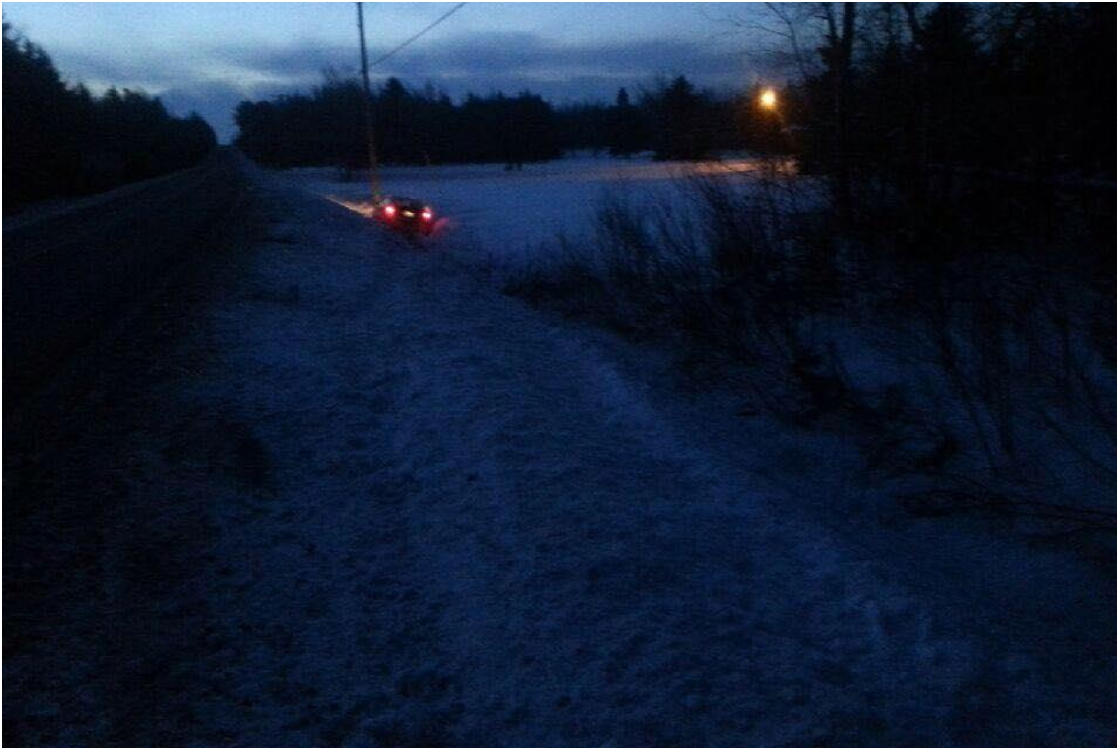
**Sounds a lot like Coles Island School,  
don't you think?**



# Parents & Families

**Children are valuable beyond a dollar amount!**





**With little ones comes little bladders and no bathroom facilities available and none in between communities.**

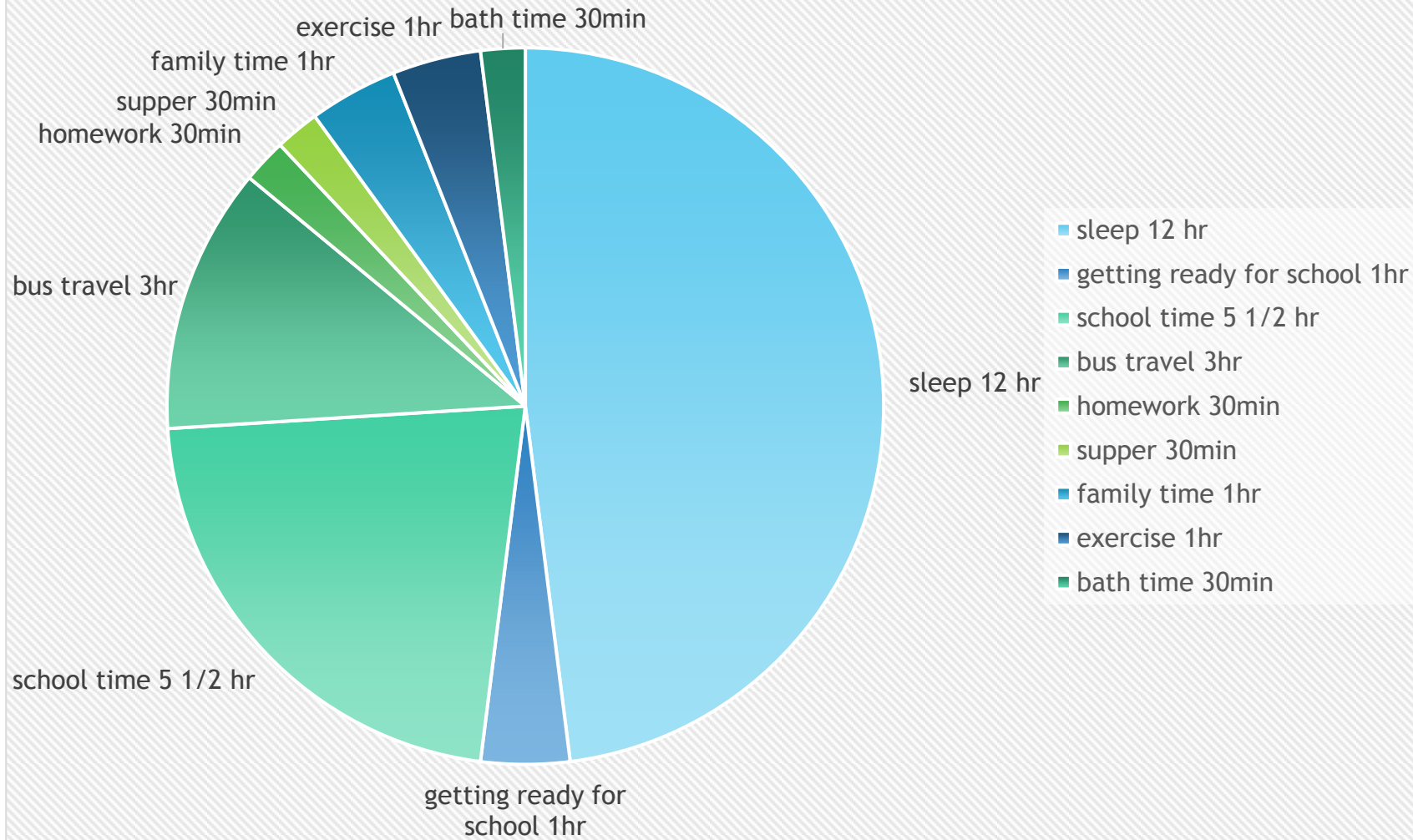


**“Serious, catastrophic or fatal as a bus driving highway speeds of 90km/hr.”**





# Average Students Day





**Longer than the average work day at 4 ½ years old.**



“Parental engagement matters. It says that study after study has shown us that student achievement improves when parents play an active role in their child's education and that good school's become better school's when parents are involved. It is recognized that parent engagement is a key factor in the enhancement of student achievement and well being. Students are more likely to be motivated, to earn higher grades, to have better behaviour and social skills, and to continue their education to a higher level when their parents are actively engaged in supporting their success at school.”



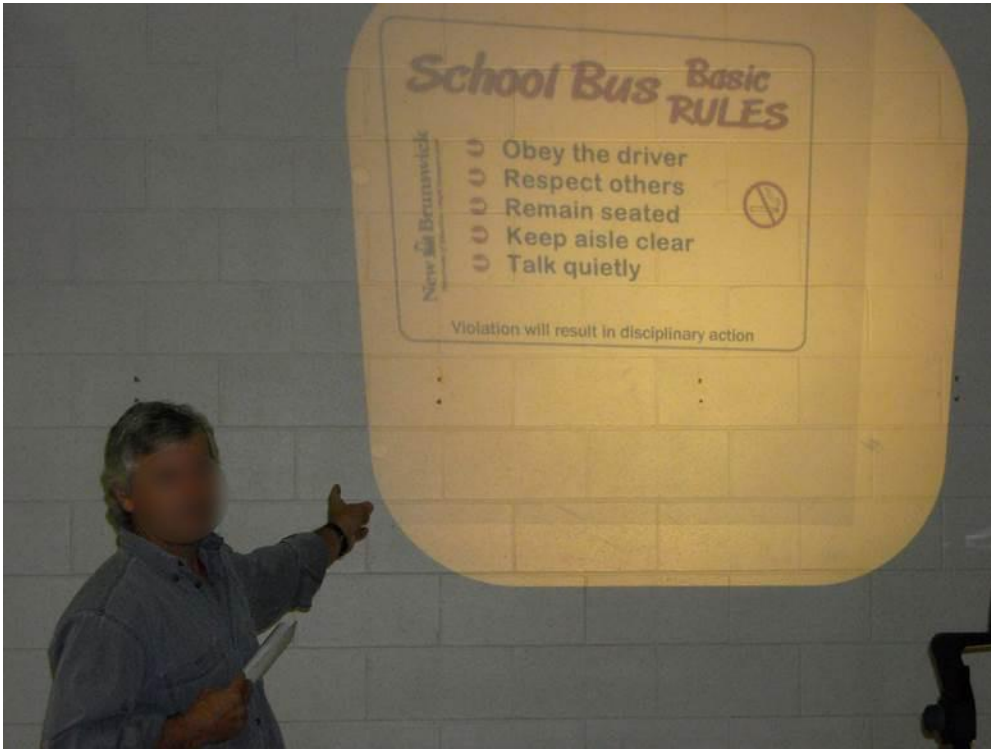
# Small But Necessary!

## Coles Island School



# Family and Community Picnic





## Bus Safety

# Thanksgiving Brunch





**Artist in Residency - Basketry**



# Swimming Lessons





# Swimming Certificates



# Christmas Concert 2014





## Christmas Dinner



Breakfast Program

# Teaching Safety



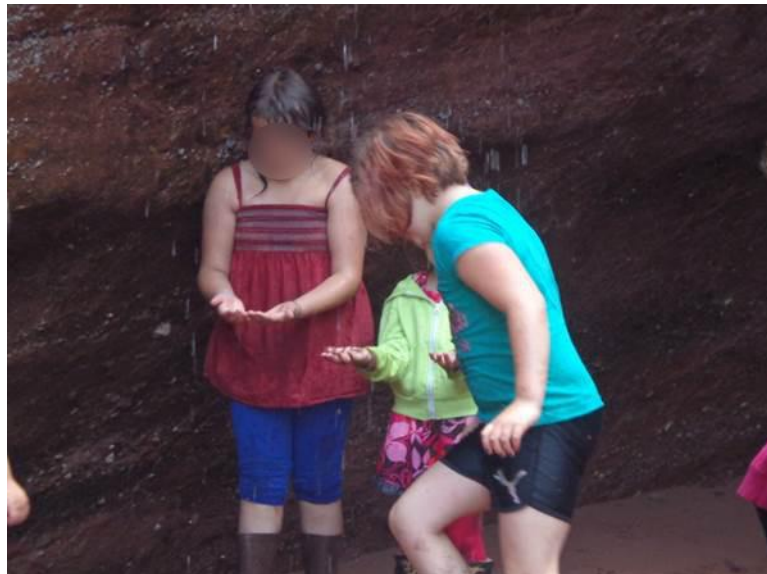
# Beam's Maple Bush Visit





# Christmas Bazaar





## St. Martins Sea Caves



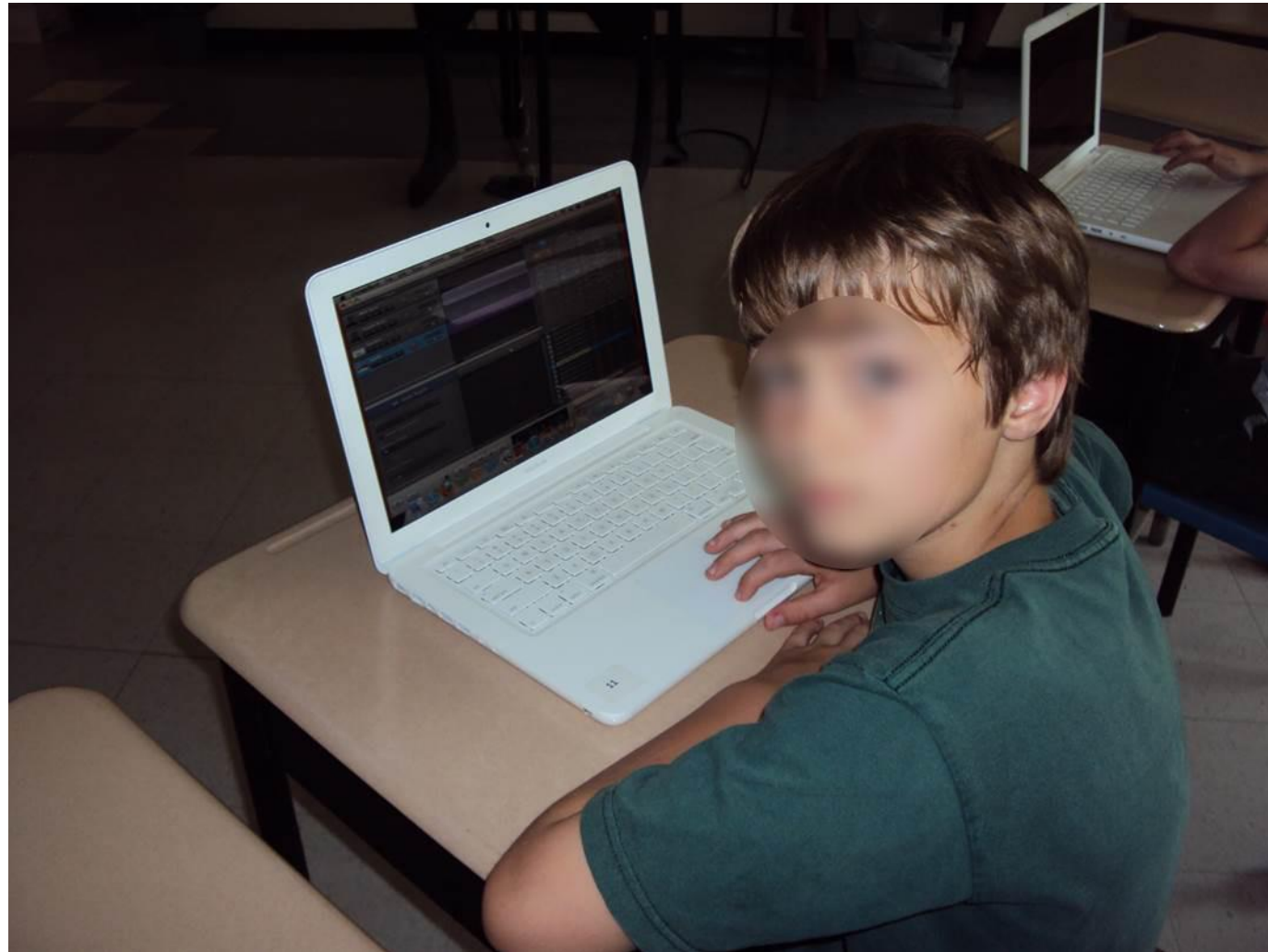
# King's Landing Historical Settlement





Black Duck Marsh

# Learning with Technology





Hopewell Rocks

# Skating



# Kingswood



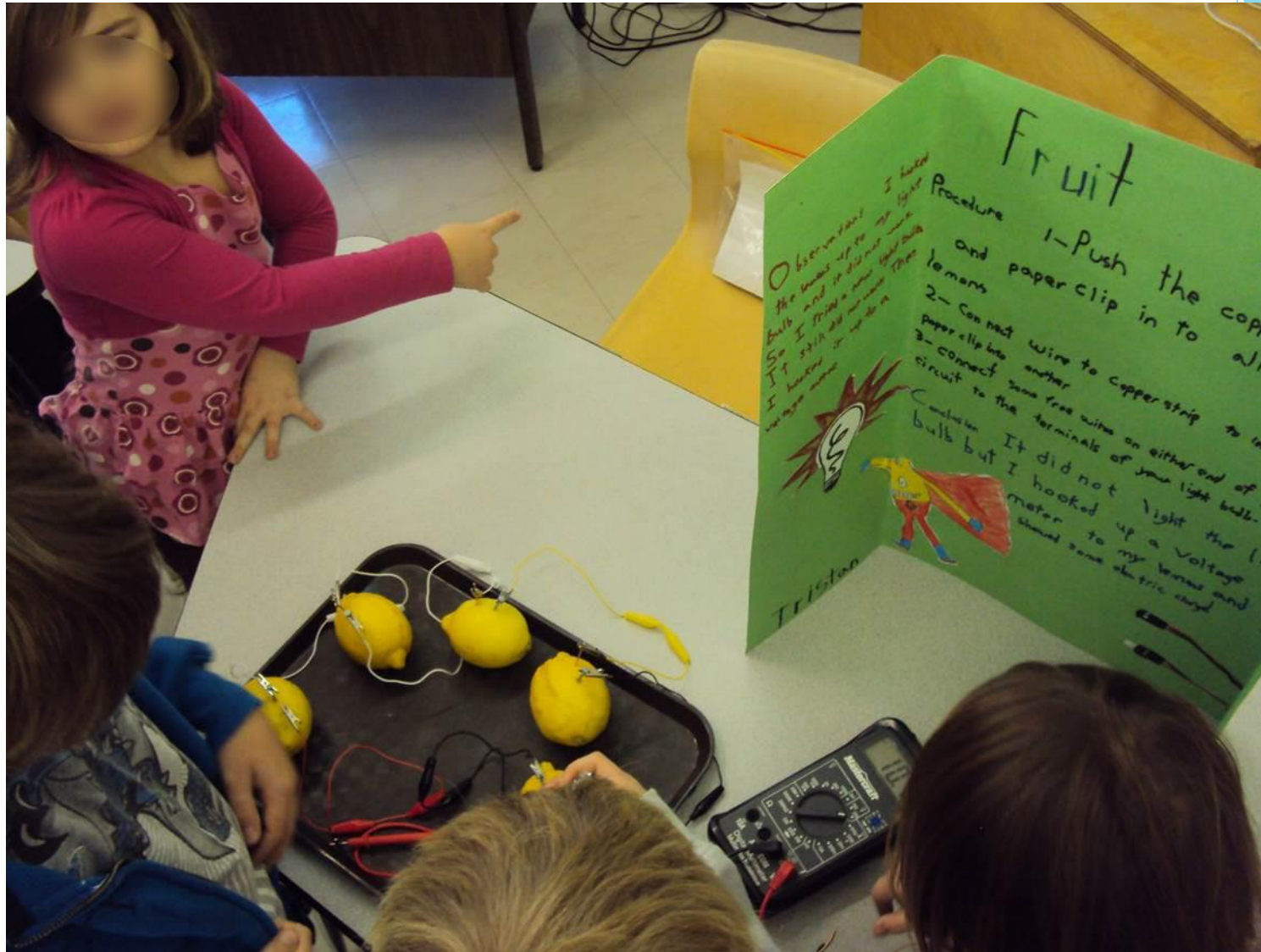


Farm to School (Apple Picking)



## Remembrance Day Assembly





Science Fair



## Fun at School



# After school activities at CIS





## Legislative Assembly of New Brunswick



## Grade 5 Graduation

**This is Home!**



Our rural students are important New Brunswick citizens and need to be treated with understanding and respect.

