



Florenceville Elementary School

PO Box 431, 8470 Main Street, Florenceville-Bristol, NB E7L 4J8

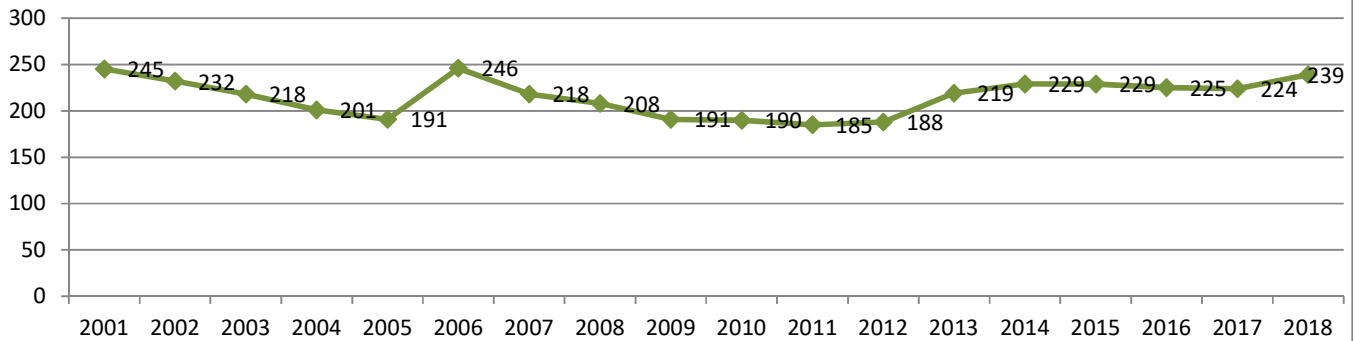
Phone: (506) 392-5109 Fax: (506) 392-5122

Grades: K-5

Built: 1966

Functional Capacity Data <small>based on 24 students per class</small>	Student Enrollment	Number of Classrooms	Classrooms In Use	School Capacity	Capacity Rating
	239	12	12	288	83.0%

School Enrollment Trends 2001 to Present



Physical Description:

- Built in 1966.
- Electrical entrance is 400 amps, 120/240 single phase and in good condition. There is limited capacity available for more circuits.
- Exterior lighting is H.I.D. (High Intensity Discharge)
- Interior lighting is fluorescent in good condition.
- Hot water heating system has a "Volcano" boiler.
- There are 2 exhaust fans; one is original, one is 2004.
- The school operates the heating controls.
- Air quality is good.
- Washrooms are in fair condition – urinals and sinks are original.
- Playground has various apparatus, soccer field. A very nice playground.
- Windows are in poor condition; they are original.
- Replaced four sets of double exterior doors, July 2011.
- There is no cafeteria.
- Floors are tile and terrazzo.
- Ceilings in the hallways are suspended; classrooms are cedar.
- Painting is done according to a summer schedule.
- Interior doors are wood and not fire rated.
- Gymnasium floor is made of tile in good condition. Square footage is 3127square feet.
- There is no wheel chair access to the stage.
- There is not proper access to the roof; requires a ladder from the outside.
- Corridor walls are masonry.
- Parking is paved and gravel and in good condition.
- Water supply is a well with an ultra-violet system.
- Roof does not leak.
- Land ownership around the school is residential.
- There is room to expand and the neighborhood is appropriate to maintain a school facility for years to come.
- The school is 1,847 square meters.
- There are no known environmental concerns.



Florenceville Elementary School

PO Box 431, 8470 Main Street, Florenceville-Bristol, NB E7L 4J8

Phone: (506) 392-5109 Fax: (506) 392-5122

Grades: K-5

Built: 1966

Operational Costs

Electricity	\$	19,599.63
Water/Sewage	\$	6,663.96
Garbage Removal	\$	4,178.04
Snow Plowing	\$	5,250.00
Heating Fuel	\$	19,691.88
Natural Gas	\$	-
Cleaning Supplies/Services	\$	4,045.24
Minor Repairs/Renovations	\$	22,917.14
Total	\$	82,345.89

Operational Costs Per Square Meter \$ 44.58

Based on: 1847 Sq Meters

Operational Costs Per Student \$ 365.98

Based on: 239 Enrollment



Florenceville Elementary School

PO Box 431, 8470 Main Street, Florenceville-Bristol, NB E7L 4J8

Phone: (506) 392-5109 Fax: (506) 392-5122

Grades: K-5

Built: 1966

Feeder Schools

Students move to Florenceville Middle School for grades 6-8.

Catchment Area Boundaries

North to #9280 Route 105, #1360 Route 570, #770 East Coldstream Road and Route 110 with Hume Road and Hilltop Crescent added; West to #350 Dryer Road; East to include the East Coldstream Road; South to #3495 Route 103, #7416 Route 105, #10365 Route 130 and #110 Route 570.



Florenceville Elementary School

PO Box 431, 8470 Main Street, Florenceville-Bristol, NB E7L 4J8

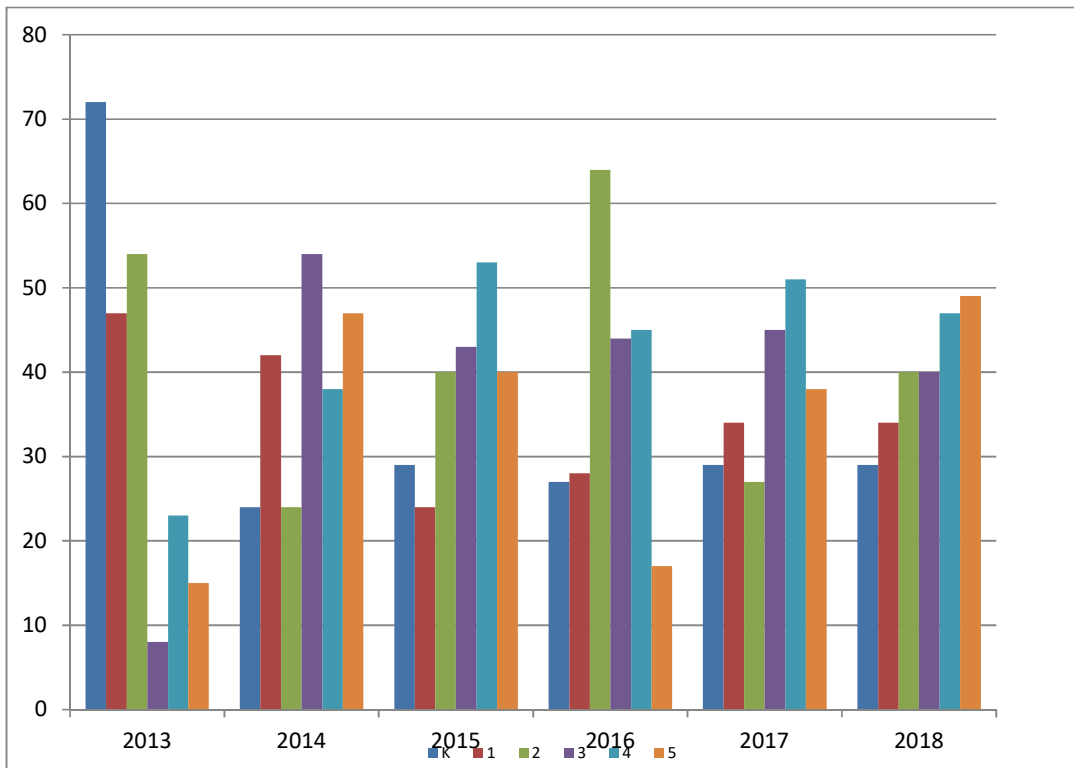
Phone: (506) 392-5109 Fax: (506) 392-5122

Grades: K-5

Built: 1966

Enrollment 2013-2018

	2013	2014	2015	2016	2017	2018
K	72	24	29	27	29	29
1	47	42	24	28	34	34
2	54	24	40	64	27	40
3	8	54	43	44	45	40
4	23	38	53	45	51	47
5	15	47	40	17	38	49
Total	219	229	229	225	224	239





Florenceville Elementary School

PO Box 431, 8470 Main Street, Florenceville-Bristol, NB E7L 4J8

Phone: (506) 392-5109 Fax: (506) 392-5122

Grades: K-5

Built: 1966

Major Capital and Capital Improvements Projects 2010-2019

School Year	Project	Capital Improvements	Major Capital
2011-2012	Boiler	\$ 5,400	
2011-2012	Exterior Doors	\$ 29,900	
2017-2018	Site Improvement	\$ 40,000	
Total		\$ 75,300	\$ -