

ANGLOPHONE WEST SCHOOL DISTRICT



Sustainability Study

Nashwaaksis Memorial School



Public Meeting #1 Agenda

- Introductions
- Review of Provincial Policy 409 Multi-Year School Infrastructure Planning
- Presentation of Information – Nashwaaksis Memorial School
- Question and Answer
- What's Next?
 - o Online Resources and Feedback
 - o Next Meetings



Provincial Policy 409

Multi-year School Infrastructure Planning

- Outlines a number of responsibilities to do with facilities in our system
- Sections 6.4, 6.5 and 6.6 are relevant for sustainability studies
- Three Public Meetings
 - Meeting 1 – Presentation of information from District regarding school (Policy 409, 6.4.4)
 - Meeting 2 - Presentation from stakeholders regarding their thoughts on the sustainability of the school and relevant factors
 - Meeting 3 – Final review of information by District Education Council (DEC) and subsequent motion on next steps



Provincial Policy 409

Multi-year School Infrastructure Planning

- Three Possible Outcomes
 - o Maintain the status-quo at Nashwaaksis Memorial School
 - o Provide for repairs to Nashwaaksis Memorial School
 - o Build a new school, closing Nashwaaksis Memorial School and combine with McAdam Avenue School for students continued education.
- Public meetings provide the DEC with information to make an informed decision.



*Excited. Involved.
Prepared.*

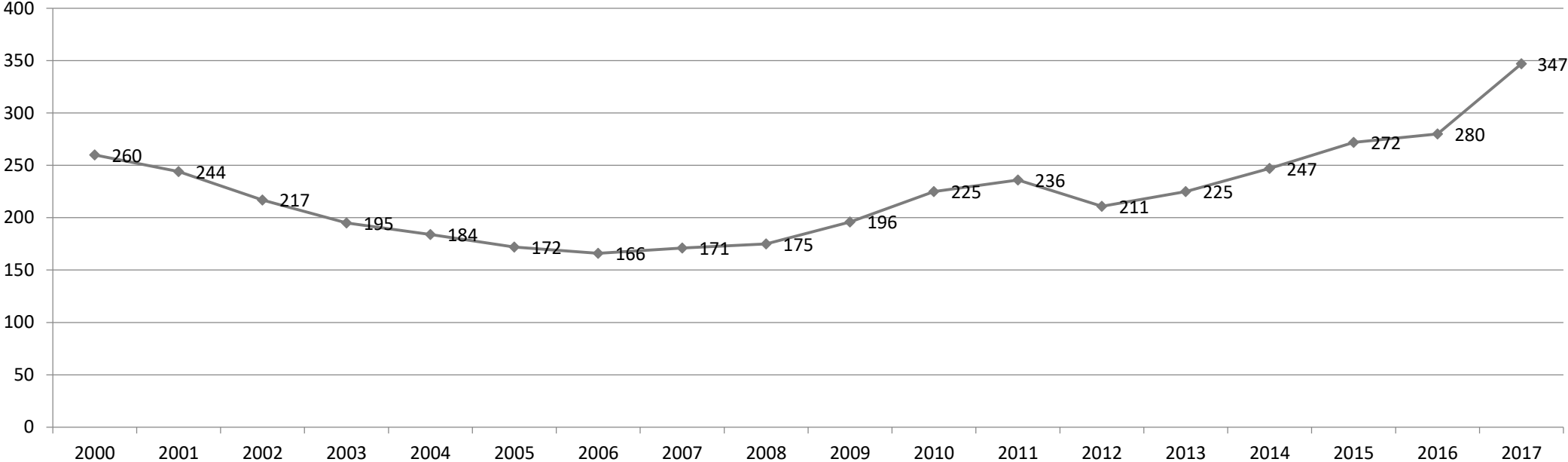
Information to be Presented

- Enrollment
- Quality of Education Programs & Services
- Provincial Assessment Results
- Transportation
- Finances
- Impact on Other Schools
- Building Challenges
- Economic Development
- Vision for New School



Enrollment

School Enrollment Trends 2000 to Present



*Excited. Involved.
Prepared.*

Enrolment By Grade Level: Nashwaaksis Memorial School

	2011	2012	2013	2014	2015	2016	2017	2018 Projected August
K	37	51	43	45	66	43	96	51
1	49	30	49	43	45	66	30	79
2	37	42	32	48	45	48	62	55
3	33	26	43	36	44	46	60	67
4	39	31	27	41	34	42	57	60
5	41	31	31	34	38	35	42	55
Total	236	211	225	247	272	280	347	367



*Excited. Involved.
Prepared.*

Quality of Education Programs & Services

Educational Staff – Nashwaaksis Memorial School

	2017-2018		2018-2019	
Full Time Equivalent (FTE)	Provincial Staffing Formula 2017-2018	Actual 2017-2018	Provincial Staffing Formula 2018-2019	Projected August 2018-2019
Classroom Teachers	20.90 FTE	20.90 FTE	23.10 FTE	23.10 FTE
Administration	1.26 FTE	1.20 FTE	1.47 FTE	1.50 FTE
Guidance	0.69 FTE	0.50 FTE	0.73 FTE	0.70 FTE
Resource	1.93 FTE	1.50 FTE	2.04 FTE	2.00 FTE
Additional FTE	0.00 FTE	0.00 FTE	0.00 FTE	0.00 FTE
Total	24.78 FTE	24.10 FTE	27.34 FTE	27.30 FTE



Maximum Class Sizes

Grade Level	Maximum Number of Students
K-2	21
3	26
K-3 Combined Classes	16
Grades 4-6	28
Grades 3-5 Combined Classes	23
Grades 7-12	29
Grades 5-12 Combined Classes	24



Quality of Education Programs & Services

Student Teacher Ratio

	Provincial Staffing Formula		Actual	
Year	Total Number Student: Ratio	Student: Teacher	Total Number Student: Ratio	Student: Teacher
2017-2018	347:24.78	14.00:1	347:24.10	14.40:1

	Provincial Staffing Formula		Projected August	
Year	Total Number Student: Ratio	Student: Teacher	Total Number Student: Ratio	Student: Teacher
2018-2019	367:27.34	13.42:1	367:27.30	13.44:1



Support Staff Information

Full Time Equivalent (FTE) 2017-2018	Nashwaaksis Memorial School
Educational Assistants	270 hours per week (9.0 FTE)
Administrative Assistant II	36.25 hours per week (1.0 FTE)
School Library Worker I	9.5 hours per week (.26 FTE)
Custodian I	91.4 hours (2.3 FTE)



Support Staff Information

Projected Full Time Equivalent (FTE) 2018-2019	Nashwaaksis Memorial School
Educational Assistants	300 hours per week (10.0 FTE)
Administrative Assistant II	51.25 hours per week (1.4 FTE)
School Library Worker I	15 hours per week (.4 FTE)
Custodian I	91.4 hours (2.3 FTE)



Core Curriculum and Supports

	Early French Immersion	Late French Immersion	Gymnasium	Music/Fine Arts/Specialists	EST-Resource	EST-Guidance	EST-Literacy	EST-Math	EST-French Immersion	EST-Science	Science Lab	Computer Lab
Nashwaaksis Memorial School	Yes	No	Yes, not regular size	Yes	Yes	Yes	3-4 month block for K-2 by District EST-L 17-18 Projected 6 months by District EST-L 18-19	2@3week block for 3-5 & 1@ 3 week block for K-2 by District EST-N 17-18 Projected 4-6 week block for 3-5 by District EST-N 18-19	Yes	Yes, consults with District EST-S	No	No



*Excited. Involved.
Prepared.*

Quality of Education Programs & Services

- Nashwaaksis Memorial School has French Immersion programs beginning in Grades 1 and 3.
- Students from McAdam Avenue School enter Nashwaaksis Memorial School for French Immersion programs beginning in Grade 1 and 3.
- Grade 5 students from Nashwaaksis Memorial School enter Nashwaaksis Middle School for English Prime and French Immersion Programs.
- Grade 5 students from Nashwaaksis Memorial School enter Nashwaaksis Middle School for late French Immersion programs beginning in Grade 6.



Special Events that Encourage Community School Partnerships

- Nashmore Parents Association
- PSSC
- Field Trips
- Fundraising
- SPCA
- Fredericton Community Kitchen
- BOKS – Parent led open gym
- Enrichment Project Presentations
- Classroom presentations to parents
- Superstore & Sobeys
- Enbridge Tutors
- ELF
- Tony’s Music Box – sound system
- Local business donations
- Classroom service projects
- Leo Hayes Leadership Club

For a sample of community activities and school partnerships as presented by the school and for school newsletters, please view the school’s website:

<https://secure1.nbed.nb.ca/sites/ASD-W/NasisMemorial>



*Excited. Involved.
Prepared.*

Special Events that Encourage Community School Partnerships (Cont'd)

- Lions Club/City Police Fingerprinting Campaign
- Local Churches
- Mitch Clarke Ice Rink/Business Fredericton North
- Co-op Students
- University Interns
- Halloween Howl – Run by Nashmore Parents and teachers
- June Family Fun Night
- York Care Centre – cards, plants, and visits
- UNB Robotics – after school club
- Brilliant Labs
- Smoothie Day (Nurse and Dietician)

For a sample of community activities and school partnerships as presented by the school and for school newsletters, please view the school's website:

<https://secure1.nbed.nb.ca/sites/ASD-W/NasisMemorial>



*Excited. Involved.
Prepared.*

Student Voice

- Wellness Initiatives
- Social Skills training to Grade 1 by Grade 5s
- Breakfast Club
- Extra-Curricular Clubs run by Student Leaders
- Playground Pals
- Conflict Corner
- Lunch Buddies
- Bilingual Fair/Celebration
- Leadership Club



*Excited. Involved.
Prepared.*

Provincial Assessment Results

Grade 2 Reading Nashwaaksis Memorial School

Year	Nashwaaksis Memorial School	District	Province
2011-2012	81.8%	78.0 %	79.1 %
2012-2013	78.0%	80.3 %	79.5 %
2013-2014	45.5%	76.8 %	77.5 %
2014-2015	88.9%	77.3%	76.9 %
2015-2016	75.6%	75.2 %	73.8 %
2016-2017	81.7%	75.9%	75.7%
2017-2018			



School Benefits

- Grade level teams
- Team Leaders
- "Teachers Teaching Teachers" PL Initiative
- Teacher Leaders – committees & initiatives
- 4 SIP teams



*Excited. Involved.
Prepared.*

School Challenges

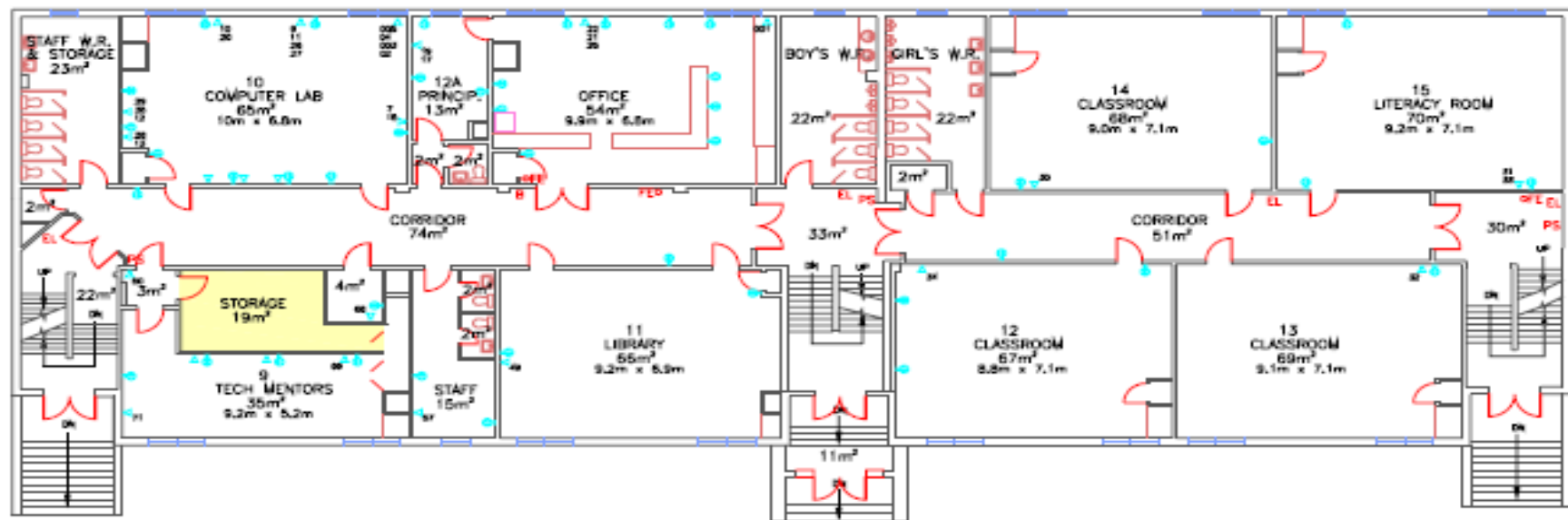
- Limited space for support staff to work: SLP, PT, OT, EA, APSEA
- No available space for staff meetings
- Washroom facilities - not enough but more sinks are being installed
- Close to Main Street – traffic, safety is a concern
- Attendance - chronic absenteeism for some families
- Fence needs continuous maintenance
- Double classes in the gym



Building Summary

- The school is three-storey wood framed construction built in 1948. The school has a floor area of 2,910 square meters.
- The school has 14 classrooms, a library and 6 modular classrooms.
- There is no cafeteria and the gymnasium is not regulation size.

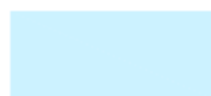




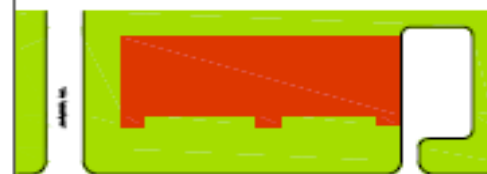
FIRST FLOOR PLAN
(SCALE 1:200)



STORAGE



MECHANICAL / ELECTRICAL



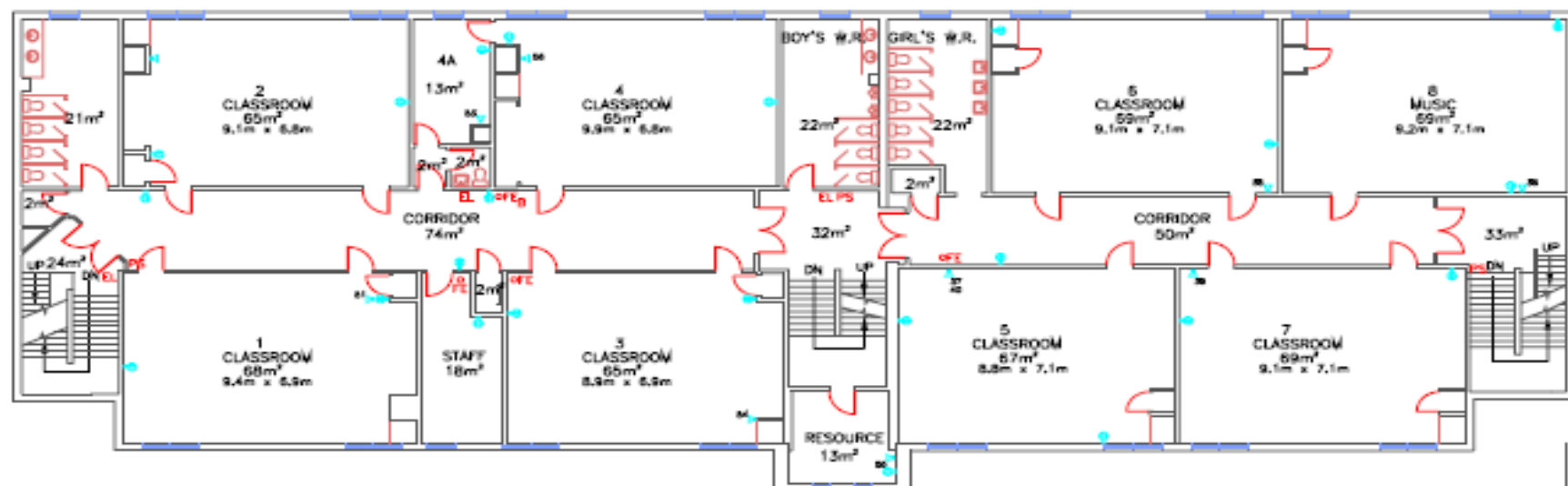
NO.	REVISIONS / REVISIONS	DATE	PAR / BY

Department of Education
Ministère de l'Éducation

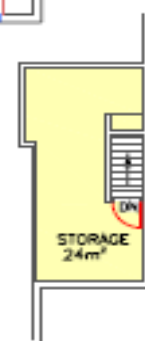
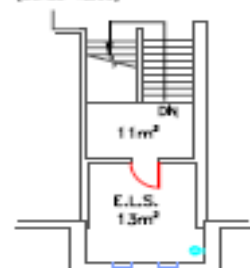
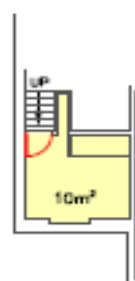


TITLE / TITRE
Nashwaaksis Memorial
80 Main Street
Fredericton, NB
- School District 18 -

DÉTAILLE / SCALE 1:200	DATE JAN 28/08
DOSSIER D.A.O. / C.A.D. FILE Nashwaaksis Memorial School.DWG	
DESSINE PAR / DRAWN BY C.S.TEIVES	NO DU DESSIN / DRAWING NO. A2
APPROUVE PAR / APPROVED BY 	



SECOND FLOOR PLAN
(SCALE 1/200)



STORAGE
MECHANICAL / ELECTRICAL



NO.	REVISED / REVISIONS	DATE	PAR / BY

Department of Education
Ministère de l'Éducation



TITRE / TITLE
Nashwaaksis Memorial
80 Main Street
Fredericton, NB
- School District 18 -

COPIE / SCALE 1/200	DATE JAN 25/08
DOSSIER D.A.O. / CAD. FILE Nashwaaksis Memorial School.DWG	
DESSINÉ PAR / DRAWN BY C.SHELVEY	NO DU DESSIN / DRAWING NO. A3
APPROUVÉ PAR / APPROVED BY XXXXX	

Functional Capacity

Functional Capacity Data	Student Enrollment	Number of Classrooms	Classrooms In Use	School Capacity	Capacity Rating
Based on 24 students per class	347	14	13	336	103.3%



*Excited. Involved.
Prepared.*

Building Challenges

- There is no mechanical ventilation in the school except for exhaust fans serving the washrooms.
- There is no sprinkler system.
- Washroom access for the 6 portable classrooms is inconvenient.
- There is asbestos present in both wall and ceiling plaster, some floor tiles and pipe insulation. This is managed safely by trained staff but makes renovation work challenging.



Capital Investments

School Year	Scope of Work	Cost
2009-2010	Washroom Upgrade	\$ 69,325
2014-2015	New Lift	\$ 214,017
2017-2018	Site Improvement	\$ 125,000
Total		\$ 408,342



*Excited. Involved.
Prepared.*

Physical Plant Status

School Physical Plant Review / Report by School

School: Nashwaaksis Memorial School (ASD-W)		Grades: Kindergarten, 1-5		Year Built: 1948
ASD-W	School No: 2621	City/Village: Fredericton	Enrolment:347	Total Area (m2): 2910
Mechanical and Electrical Systems		Description	Priority	Est. Cost
Heating and Ventilation	Ventilation System	New ventilation system. Note: Estimated costs updated Sept'13.	1	
Heating and Ventilation	Thermostat and Controls	Controls system	3	
Electrical	Electrical Supply and Distribution	install four new receptacles per classroom	1	
Electrical	Communication Systems	New Public Address system. Current system is outdated and requires frequent repairs.	3	
			Sub Total	
Building Interior and Additions		Description	Priority	Est. Cost
Interior Alterations and Renovations	Classrooms	Painting throughout school (hallways, stairwells and classrooms)	3	
Interior Finishes	Interior Doors	Replace all classroom & office doors w/fire rated doors	3	
Interior Alterations and Renovations	Washrooms	Upgrade all girls washrooms and one boys washroom. Girls washrooms currently not accessible.	1	
Interior Alterations and Renovations	Hallways and Stairs	Stairwells require upgrades to handrails and guards to meet current code.	1	
Interior Alterations and Renovations	Storage	Custodial Closet Upgrade.	3	
			Sub Total	
Building Exterior and Site		Description	Priority	Est. Cost
Building Envelope	Exterior Doors	Replace 3 sets of exterior doors. In poor condition and need constant maintenance.	1	
			Sub Total	
SCHOOL TOTAL				\$1,140,000.00



Facilities Costs

Actual Costs			
	Fiscal Year	Fiscal Year	Fiscal Year
	2015/16	2016/17	2017/18
Facilities Costs			
Electricity	38967.02	42329.63	48689.3
Water/Sewage	2887.2	3417.52	3705.48
Garbage Removal	1096.32	1096.32	1096.32
Snow Plowing	23277.78	23277.78	23220
Heating Fuel		0	0
Natural Gas		0	0
Cleaning Supplies/Services	8542.4	7224.38	16516.59
Minor Repairs/Renovations	7936.9	17537.64	25911.75
Total	82707.62	94883.27	119,139.4



*Excited. Involved.
Prepared.*

Assigned Budgets

Actual Costs Fiscal Year 2017-2018

Assigned Budgets

Regular Instruction	\$20,862
Admin Support	\$4,926
Library	--
Teacher Working Conditions	\$2,937
Nutrition	\$2,590
Bilingual Learning Environment	\$600
Wellness Grant	\$1,937
Co/Extra Trips	\$1,037
PSSC	\$868
Total	<u>\$35,757</u>



*Excited. Involved.
Prepared.*

Nashwaaksis Memorial School Salaries

Actual Costs Fiscal Year 2017-2018

Salaries

Administration	\$24,160
Teachers	\$1,558,405
Admin Assistant	\$47,708
Educational Assistants	\$215,998
Custodian	\$88,145
Total	<u>\$1,934,416</u>



*Excited. Involved.
Prepared.*

Nashwaaksis Memorial School Salaries

Projected Costs Fiscal Year 2018-2019

Salaries

Administration	\$25,721
Teachers	\$2,087,565
Admin Assistant	\$53,576
Educational Assistants	\$312,581
Custodian	\$89,005
Total	<u>\$2,568,448</u>



*Excited. Involved.
Prepared.*

Transportation Study

Nashwaaksis Memorial School

- Students in Grades 6-12 who reside in the Nashwaaksis Memorial School catchment area are bused to Nashwaaksis Middle School and Leo Hayes High School. Nashwaaksis Memorial School has the French Immersion programming available.
- The morning school bus system has 4 buses transporting students within the Nashwaaksis Memorial catchment area into the Nashwaaksis Memorial School.
- The afternoon school bus system has 3 buses transporting students within the Nashwaaksis Memorial catchment area into the Nashwaaksis Memorial School.
- There would not be any anticipated impact with regards to the number of school buses or drivers if Nashwaaksis Memorial School should close.



Transportation Study Nashwaaksis Memorial School(cont'd)

School	Longest Ride In	Longest Ride Out	Earliest Pick-up	Latest Drop Off	Average Ride Time
Nashwaaksis Memorial School	48 MIN	37 MIN	7:16AM	4:17PM	15 MIN
Potential New McAdam Avenue Area School	50 MIN	40 MIN	7:16 AM	4:17PM	22 MIN



*Excited. Involved.
Prepared.*

Transportation Study

Nashwaaksis Memorial School - Busing

	Distance to Nashwaaksis Memorial School	Distance to Potential New McAdam Avenue Area School
Average Distance	2.4km	4.3km
Maximum Distance	4.7km	6.1km
Minimum Distance	0.1km	1.6km



*Excited. Involved.
Prepared.*

Our Vision for New School

A typical K-5 school for 500 students would like something like this:

- 24-28 classrooms (kindergarten and general)
- 1 early childhood development room
- Music room and performing arts room
- 3-4 project work areas
- 4 resource rooms
- Special care resource room and workroom
- Health room & multi-functional rooms



*Excited. Involved.
Prepared.*

Our Vision for New School

- Double gymnasium & single gym with auxiliary spaces
- Library and seminar room
- Stage, Cafeteria, kitchen
- Guidance and visiting professionals' offices
- Administration offices and storage
- Personnel centre/staff room with lounge and work area
- Main custodial work area & recycling area
- Dedicated parent/bus drop areas
- Outdoor playground, hard surface play area & playing field



Possible Considerations - Impact

- Maintain the status quo at Nashwaaksis Memorial School
- Provide for repairs to Nashwaaksis Memorial School
- Build a new school, closing Nashwaaksis Memorial School and combine with McAdam Avenue School for students continued education.
- Economic Development impact was considered but the scenario of building a new school would negate any negative impact.



Scenario

	Nashwaaksis Memorial School (K-5)	McAdam Avenue School (K-5)	New School (K-5) (with Nashwaaksis Memorial School & McAdam Avenue School students)
Projected 2018-2019 enrollment	367	74	441
Projected 2018-2019 # of homerooms	21	5	24
Projected 2018-2019: Classroom Teachers FTE	23.10	5.90	26.40
Administration FTE	1.50	0.40	1.80
Guidance FTE	0.70	0.00	0.90
Resource FTE	2.00	0.40	2.50
Additional FTE	0.00	0.10	0.00
Projected 2018-2019 Teacher FTE	27.30	6.80	31.60



Questions and Answers

- Our presenters are ready to take questions from the floor.



*Excited. Involved.
Prepared.*

What Happens Next

- Public Meeting #2 – Nov. 1 at 6:30 p.m. at this school.
- Public Meeting #3 – Jan. 24, 2019 at 6:30 p.m. at FHS
- DEC makes a recommendation on school's future
- Government considers the recommendation and makes a decision.
- Visit our website for further details and information on sustainability studies at www.asd-w.nbed.nb.ca



*Excited. Involved.
Prepared.*