

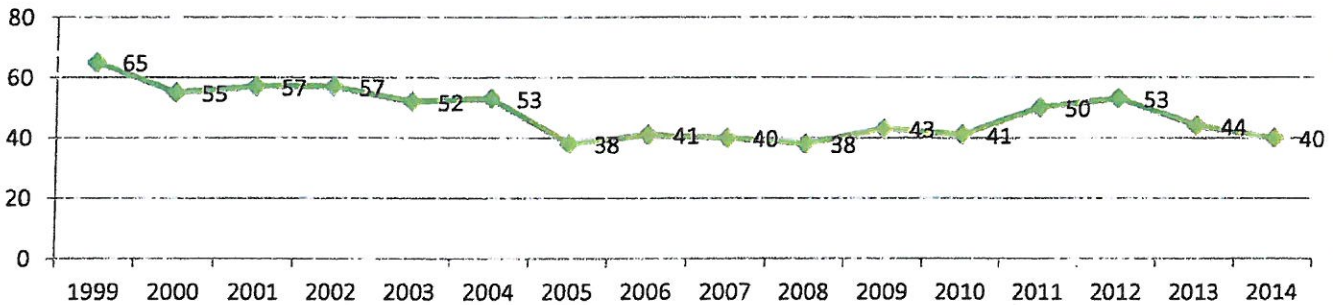


Millville Elementary School

3958, Hwy 104, Millville, NB E6E 1S9
 Phone: (506) 463-6000 Fax: (506) 463-6001
 Grades: K-5
 Built: 1949

Functional Capacity Data	Student Enrollment	Number of Classrooms	Classrooms In Use	School Capacity	Capacity Rating
based on 24 students per class	40	4	3	96	41.7%

School Enrollment Trends 1999 to Present



Physical Description:

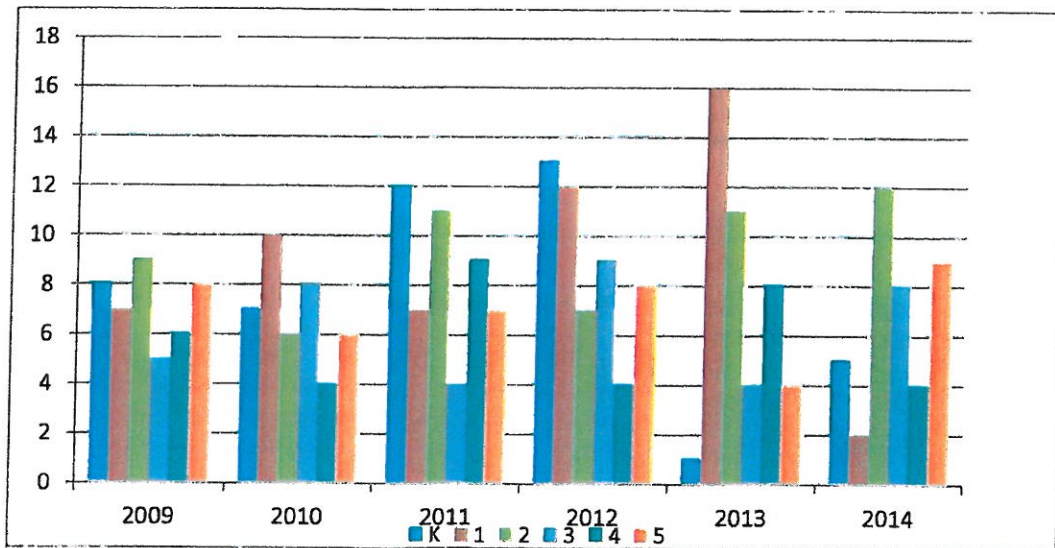
- Built in 1949.
- Electrical entrance is 200 amps, 120/240 volt and in good condition. There is no capacity available for more circuits.
- Exterior lighting is H.I.D. (High Intensity Discharge) with some NB Power poles.
- Interior lighting is fluorescent in fair condition.
- Heating system – a “Weil-McLain” boiler new in 1998.
- Attic insulation and ventilation installed July 2013.
- The school controls the heating system.
- Air quality is good.
- Washrooms are in good condition; original.
- Playground has 2 swing sets, 1 slide, a climbing apparatus and a basketball standard.
- Original windows are in poor condition. Some replaced 2003, some replaced 2005.
- Exterior doors are in good condition.
- There is no cafeteria.
- Floors are tile.
- Ceilings are the original 12 inch tiles.
- Painting is done according to a summer schedule.
- Interior doors are wood and not fire rated.
- Stairways – there is no railing at the front entrance (5 steps)
- Gymnasium floor is made of concrete in poor condition. Square footage is 1995 square feet.
- There is no wheelchair access to the stage.
- There is not a proper access to the roof.
- Corridor walls are plaster.
- There is no lift.
- Parking is adequate that is gravel and in poor condition; many potholes.
- Water supply is a well with an ultra-violet system.
- Roof does not leak.
- Land ownership around the school is residential.
- There is room to expand and the neighborhood is appropriate to maintain a school facility for years to come.
- The school is 1,068 square meters.
- There are no known environmental concerns.



Millville Elementary School
 3958, Hwy 104, Millville, NB E6E 1S9
 Phone: (506) 463-6000 Fax: (506) 463-6001
 Grades: K-5
 Built: 1949

Enrollment 2009-2014

	2009	2010	2011	2012	2013	2014
K	8	7	12	13	1	5
1	7	10	7	12	16	2
2	9	6	11	7	11	12
3	5	8	4	9	4	8
4	6	4	9	4	8	4
5	8	6	7	8	4	9
Total	43	41	50	53	44	40





Millville Elementary School

3958, Hwy 104, Millville, NB E6E 1S9

Phone: (506) 463-6000 Fax: (506) 463-6001

Grades: K-5

Built: 1949

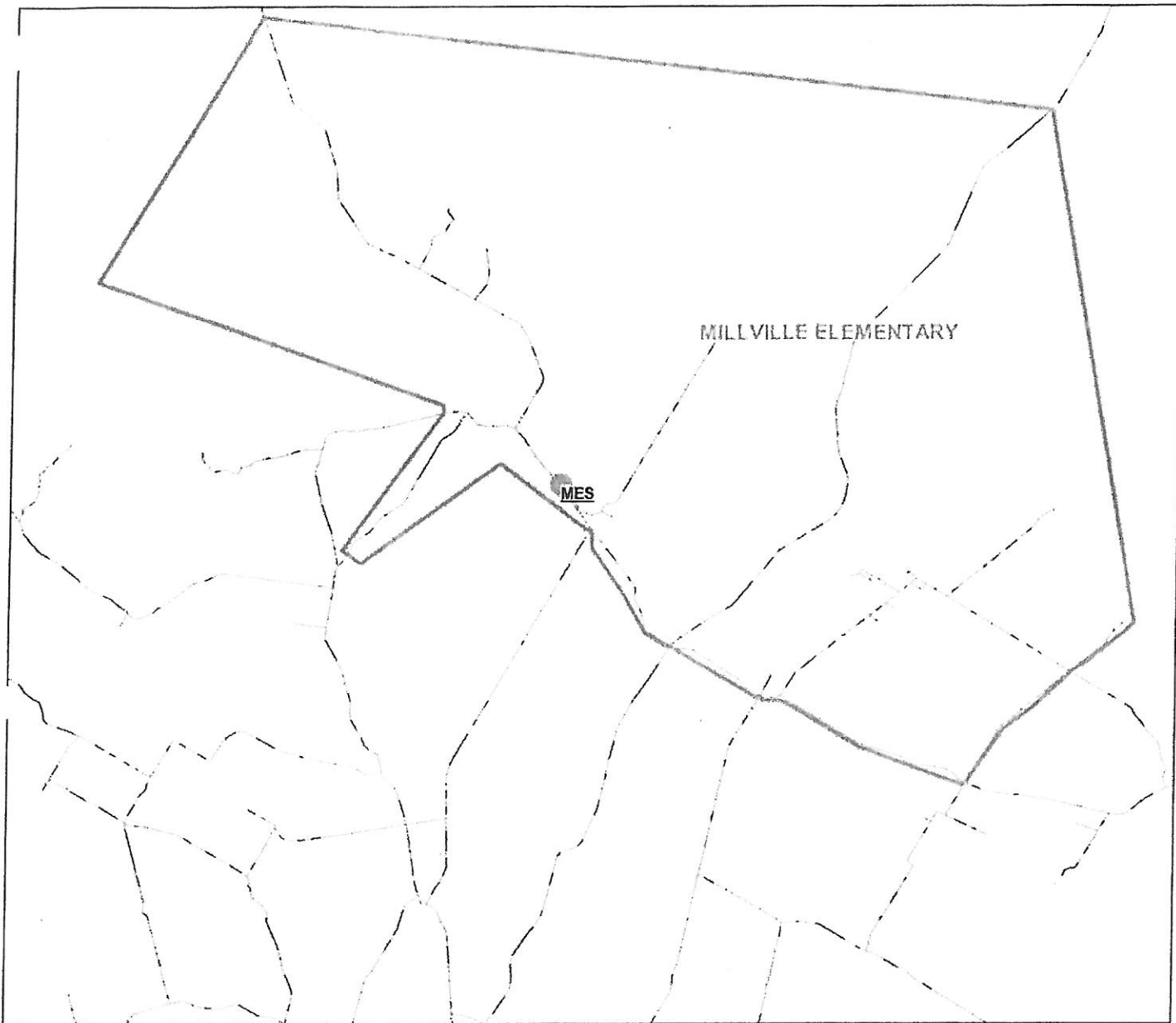
Feeder Schools

Students move onto Nackawic Middle School for grades 6-8.

Catchment Area Boundaries

North to the York County line on Route 104; West to #550 Route 585; East to the York County line; South to include Route 104 from the Maple Ridge Road to the Grub Road.

School District 14 District Map





Millville Elementary School

3958, Hwy 104, Millville, NB E6E 1S9
Phone: (506) 463-6000 Fax: (506) 463-6001

Grades: K-5

Built: 1949

Operational Costs

Electricity	\$	4,577.84
Water/Sewage	\$	-
Garbage Removal	\$	2,412.29
Snow Plowing	\$	7,725.00
Heating Fuel	\$	12,543.68
Natural Gas	\$	-
Cleaning Supplies/Services	\$	1,374.91
Minor Repairs/Renovations	\$	4,782.45
Total	\$	33,416.17

Operational Costs Per Square Meter \$ 31.29
Based on: 1068 Sq Meters

Operational Costs Per Student \$ 835.40
Based on: 40 Enrollment



Millville Elementary School
3958, Hwy 104, Millville, NB E6E 1S9
Phone: (506) 463-6000 Fax: (506) 463-6001
Grades: K-5
Built: 1949

Major Capital and Capital Improvements Projects 2010-2015

School Year	Project	Capital Improvements	Major Capital
2009-2010	Septic Field	\$ 50,257	
2013-2014	Roof Repairs	\$ 15,620	
2013-2014	Oil Tank Replacement	\$ 11,913	
Total		\$ 77,790	\$ -

Capital Improvement Projects

School: Millville Elementary School (ASD-W) 2808 City/Village: Millville Enrollment: 40 Total Area (sqM): 1949
 District: ASD-W School Number: 2808

Building Exterior and Site

Description	Year Built
Building Envelope	1949
Exterior Walls	
Building Envelope	
Exterior Windows	
Building Envelope	
Roofs	
Other	
Site	
Peak roof 3-1 shingles	
PAVING	
NORTH SIDE WINDOW REPLACEMENT	

Building Interior and Additions

Description
Interior Accessibility
Lift
Interior Alterations and Renovations
Offices
Interior Finishes
Floors
Floor replacement
Paraplegic lift and automatic door openers
Office relocation

Mechanical and Electrical Systems

Description
Electrical
Communication Systems
Intercom system throughout School
Electrical
Electrical Supply and Distribution
Electrical upgrade
Heating and Ventilation
Ventilation System
Ventilation system and electrical upgrade. Note: Estimated costs updated Sept'13.
Water Supply and Sewer
Water Supply and Distribution
Backflow prevention

School Total: \$836,900.00



Millville Elementary